

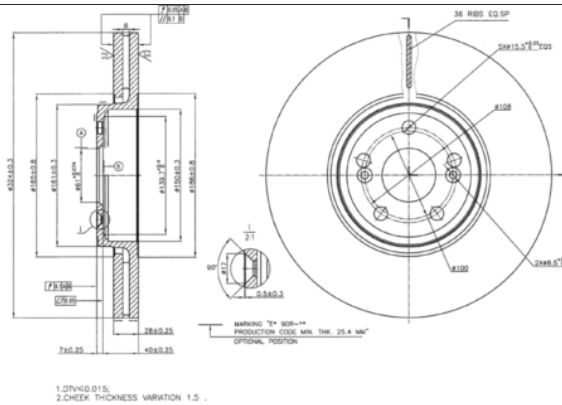
LISTA DE APLICACIONES - BUYERS GUIDE

78BD7357-2



Weight: 22.540

O.E.M.	MAKE
7 701 206 923	RENAULT
77 01 207 357	RENAULT
82 00 177 024	RENAULT
82 00 242 318	RENAULT
82 00 570 191	RENAULT
82 01 695 235	RENAULT



78BD7357-2



Ø324x28x47

MAKE
RENAULT



Trac.	CC	Kw	CV		
					Front / Rear

RENAULT

ESPACE II (J/S63_) 01.91-10.97

						MPV (Large MPV-M1 Segment)			
2.8 V6 (J638, J63J) (Z7W 712)		Gasolina	FWD	2849	110	150	01.91-10.96	■	
2.8 V6 (J638, J63J) (Z7W 713)		Gasolina	FWD	2849	110	150	01.91-10.96	■	
2.8 V6 (J638, J63J) (Z7W 717)		Gasolina	FWD	2849	110	150	01.91-10.96	■	

ESPACE IV (JK0/1_) 11.02-

						MPV (Large MPV-M1 Segment)			
2.0 (JK0K) (F4R 790)	for light alloy rims	Gasolina	FWD	1998	98	133	11.02-12.15	■	
2.0 (JK09) (F4R 792)	for light alloy rims	Gasolina	FWD	1998	100	136	11.02-01.15	■	
2.0 Turbo (JK0A, JK0B, JK0N) (F4R 794)		Gasolina	FWD	1998	120	163	11.02-	■	
2.0 Turbo (JK0A, JK0B, JK0N) (F4R 795)		Gasolina	FWD	1998	120	163	11.02-	■	
2.0 Turbo (JK0A, JK0B, JK0N) (F4R 796)		Gasolina	FWD	1998	120	163	11.02-	■	
2.0 Turbo (JK0A, JK0B, JK0N) (F4R 797)		Gasolina	FWD	1998	120	163	11.02-	■	
2.0 (JK0A, JK1D, JK0N) (F4R 796)	for light alloy rims	Gasolina	FWD	1998	125	170	04.05-	■	
2.0 (JK0A, JK1D, JK0N) (F4R 797)	for light alloy rims	Gasolina	FWD	1998	125	170	04.05-	■	
2.0 (JK0A, JK1D, JK0N) (F4R 896)	for light alloy rims	Gasolina	FWD	1998	125	170	04.05-	■	
2.0 (JK0A, JK1D, JK0N) (F4R 897)	for light alloy rims	Gasolina	FWD	1998	125	170	04.05-	■	
3.5 V6 (JK00, JK0F, JK0P, JK0S, JK0W) (V4Y 711)		Gasolina	FWD	3498	177	241	11.02-	■	
3.5 V6 (JK00, JK0F, JK0P, JK0S, JK0W) (V4Y 715)		Gasolina	FWD	3498	177	241	11.02-	■	
1.9 dCi (JK0U) (F9Q 820)	for light alloy rims	Diesel	FWD	1870	85	116	04.03-02.05	■	
1.9 dCi (JK0U, JK0G) (F9Q 680)	for light alloy rims	Diesel	FWD	1870	88	120	11.02-	■	
1.9 dCi (JK0U, JK0G) (F9Q 820)	for light alloy rims	Diesel	FWD	1870	88	120	11.02-	■	
1.9 dCi (JK0U, JK0G) (F9Q 826)	for light alloy rims	Diesel	FWD	1870	88	120	11.02-	■	
2.0 dCi (JK02, JK03) (M9R 740)		Diesel	FWD	1995	96	131	01.06-	■	
2.0 dCi (JK02, JK03) (M9R 750)		Diesel	FWD	1995	96	131	01.06-	■	

LISTA DE APLICACIONES - BUYERS GUIDE

2.0 dCi (JK02, JK03) (M9R 760)		Diesel	FWD	1995	96	131	01.06-	■
2.0 dCi (JK02, JK03) (M9R 761)		Diesel	FWD	1995	96	131	01.06-	■
2.0 dCi (JK02, JK03) (M9R 762)		Diesel	FWD	1995	96	131	01.06-	■
2.0 dCi (JK02, JK03) (M9R 763)		Diesel	FWD	1995	96	131	01.06-	■
2.0 dCi (JK01, JK02, JK1J, JK1K, JK1H) (M9R 740)		Diesel	FWD	1995	110	150	01.06-	■
2.0 dCi (JK01, JK02, JK1J, JK1K, JK1H) (M9R 750)		Diesel	FWD	1995	110	150	01.06-	■
2.0 dCi (JK01, JK02, JK1J, JK1K, JK1H) (M9R 814)		Diesel	FWD	1995	110	150	01.06-	■
2.0 dCi (JK01, JK02, JK1J, JK1K, JK1H) (M9R 815)		Diesel	FWD	1995	110	150	01.06-	■
2.0 dCi (JK01, JK02, JK1J, JK1K, JK1H) (M9R 858)		Diesel	FWD	1995	110	150	01.06-	■
2.0 dCi (JK03, JK04, JK1C, JK1G, JK1J, JK1K) (M9R 760)		Diesel	FWD	1995	127	173	01.06-	■
2.0 dCi (JK03, JK04, JK1C, JK1G, JK1J, JK1K) (M9R 761)		Diesel	FWD	1995	127	173	01.06-	■
2.0 dCi (JK03, JK04, JK1C, JK1G, JK1J, JK1K) (M9R 762)		Diesel	FWD	1995	127	173	01.06-	■
2.0 dCi (JK03, JK04, JK1C, JK1G, JK1J, JK1K) (M9R 763)		Diesel	FWD	1995	127	173	01.06-	■
2.0 dCi (JK03, JK04, JK1C, JK1G, JK1J, JK1K) (M9R 812)		Diesel	FWD	1995	127	173	01.06-	■
2.0 dCi (JK03, JK04, JK1C, JK1G, JK1J, JK1K) (M9R 815)		Diesel	FWD	1995	127	173	01.06-	■
2.0 dCi (JK03, JK04, JK1C, JK1G, JK1J, JK1K) (M9R 859)		Diesel	FWD	1995	127	173	01.06-	■
2.2 dCi (JK07) (G9T 645)		Diesel	FWD	2188	102	139	02.06-	■
2.2 dCi (JK0H) (G9T 742)		Diesel	FWD	2188	110	150	11.02-08.06	■
2.2 dCi (JK0H) (G9T 743)		Diesel	FWD	2188	110	150	11.02-08.06	■
3.0 dCi (P9X 701)		Diesel	FWD	2958	120	163	09.05-	■
3.0 dCi (P9X 715)		Diesel	FWD	2958	120	163	09.05-	■
3.0 dCi (JK0J, JK0V) (P9X 701)		Diesel	FWD	2958	130	177	11.02-08.06	■
3.0 dCi (JK0E, JK0Y) (P9X 715)		Diesel	FWD	2958	133	181	01.06-01.15	■
VEL SATIS (BJ0_) 06.02-					Hatchback (Executive car-E Segment)			
2.0 Turbo (F4R 867)		Gasolina	FWD	1998	108	147	04.05-	■
2.0 16V Turbo (BJ0K) (F4R 762)	-06/05	Gasolina	FWD	1998	120	163	06.02-08.09	■
2.0 16V Turbo (BJ0K) (F4R 763)	-06/05	Gasolina	FWD	1998	120	163	06.02-08.09	■
2.0 16V Turbo (F4R 766)	-06/05	Gasolina	FWD	1998	125	170	04.04-	■
2.0 16V Turbo (F4R 767)	-06/05	Gasolina	FWD	1998	125	170	04.04-	■
3.5 (BJ01) (V4Y 715)		Gasolina	FWD	3498	170	231	10.04-	■
3.5 V6 (BJ0R, BJ0V, BJ0U) (V4Y 701)	-09/02	Gasolina	FWD	3498	177	241	06.02-	■
3.5 V6 (BJ0R, BJ0V, BJ0U) (V4Y 711)	-09/02	Gasolina	FWD	3498	177	241	06.02-	■
3.5 V6 (BJ0R, BJ0V, BJ0U) (V4Y 715)	-09/02	Gasolina	FWD	3498	177	241	06.02-	■
2.2 dCi (BJ0M) (G9T 700)		Diesel	FWD	2188	83	113	12.04-	■
2.2 dCi (BJ0M) (G9T 702)		Diesel	FWD	2188	83	113	12.04-	■
2.2 dCi (BJ0H) (G9T 600)		Diesel	FWD	2188	85	116	04.04-	■
2.2 dCi (BJ0H) (G9T 702)		Diesel	FWD	2188	85	116	04.04-	■
2.2 dCi (BJ0E, BJ0F, BJ0G, BJ0H) (G9T 600)		Diesel	FWD	2188	102	140	09.04-	■
2.2 dCi (BJ0E, BJ0F, BJ0G, BJ0H) (G9T 606)		Diesel	FWD	2188	102	140	09.04-	■
2.2 dCi (BJ0E, BJ0F, BJ0G, BJ0H) (G9T 607)		Diesel	FWD	2188	102	140	09.04-	■
2.2 dCi (BJ0E, BJ0F, BJ0G, BJ0H) (G9T 700)		Diesel	FWD	2188	102	140	09.04-	■
2.2 dCi (BJ0E, BJ0F, BJ0G, BJ0H) (G9T 702)		Diesel	FWD	2188	102	140	09.04-	■
2.2 dCi (BJ0E, BJ0F) (G9T 702)	-09/02	Diesel	FWD	2188	110	150	06.02-08.09	■
2.2 dCi (BJ0E, BJ0F) (G9T 703)	-09/02	Diesel	FWD	2188	110	150	06.02-08.09	■
3.0 dCi (BJ0J, BJ0N) (P9X 701)		Diesel	FWD	2958	130	177	06.02-06.06	■

