

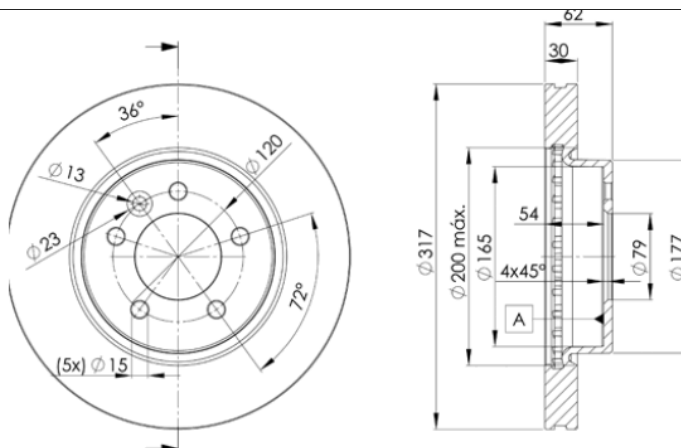
LISTA DE APLICACIONES - BUYERS GUIDE

78BD7360-2



Weight: 20.596

O.E.M.	MAKE
SDB000604	LAND ROVER



78BD7360-2

E1 90R-02C0452/0085



Ø317x30x62

MAKE
LAND ROVER



Trac.	CC	Kw	CV
-------	----	----	----



Front / Rear

LAND ROVER

DISCOVERY III / LR3 (L319) 07.04-09.09					Closed Off-Road Vehicle (Executive SUV-J Segment)			
4.0 4x4		Gasolina	4WD	3999	160	218	02.05-09.09	■
4.0 V6		Gasolina	FWD	4009	156	212	10.04-09.09	■
4.0 V6 4x4 (406PN)		Gasolina	4WD	4009	160	218	10.04-09.09	■
2.7 TD 4x4 (276DT)		Diesel	4WD	2720	140	190	07.04-09.09	■
2.7 TD 4x4		Diesel	4WD	2720	147	200	09.04-08.09	■
DISCOVERY III / LR3 (L319) 01.07-07.09					Van (Executive SUV-J Segment)			
2.7 TD 4x4 (276DT)		Diesel	4WD	2720	140	190	01.07-07.09	■
DISCOVERY IV / LR4 (L319) 09.09-					Closed Off-Road Vehicle (Executive SUV-J Segment)			
4.0 4x4 (406PN)		Gasolina	4WD	4009	160	218	09.09-12.18	■
5.0		Gasolina	FWD	4394	280	381	09.09-	■
2.7 TD 4x4 (276DT)		Diesel	4WD	2720	140	190	09.09-12.18	■
RANGE ROVER SPORT (L320) 02.05-03.13					SUV (Luxury Crossover SUV-J Segment)			
2.7 D 4x4 (276DT)		Diesel	4WD	2720	140	190	02.05-03.13	■