

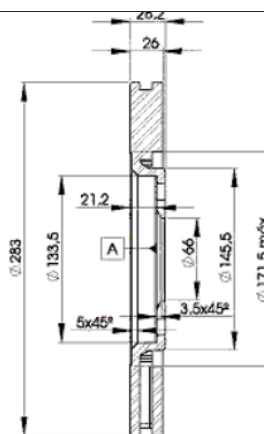
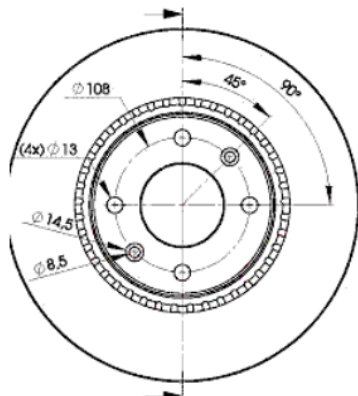
# LISTA DE APLICACIONES - BUYERS GUIDE

## 78BD7406-2



Weight: 13.672

O.E.M.	MAKE
4246.L8	CITROËN
4246.N0	PEUGEOT
4246.R7	PEUGEOT



## 78BD7406-2

E1 90R-02C0433/0053



Ø283x26x28.2

MAKE
CITROËN
PEUGEOT



Trac.	CC	Kw	CV	
				Front / Rear

### CITROËN

#### XANTIA (X1\_, X2\_) 06.95-04.03

#### Estate (Large family car-D Segment)

2.0 Turbo (RGX (XU10J2TE))		Gasolina	FWD	1998	108	147	06.95-04.03	■
2.0 Turbo	-10/98	Gasolina	FWD	1998	108	147	01.98-04.03	■
2.1 Turbo D 12V (P8C (XUD11BTE))		Diesel	FWD	2088	80	109	06.96-02.99	■
2.1 Turbo D 12V	-10/98	Diesel	FWD	2088	80	109	01.98-02.99	■

#### XANTIA (X1\_, X2\_) 03.93-04.03

#### Hatchback (Large family car-D Segment)

2.0 i 16V (RFV (XU10J4R))	vehicles with ESP	Gasolina	FWD	1998	97	132	06.95-04.03	■
2.0 16V		Gasolina	FWD	1998	99	135	06.98-11.00	■
2.0 Turbo (RGX (XU10J2TE))		Gasolina	FWD	1998	108	147	06.95-04.03	■
2.0 Turbo	-10/98	Gasolina	FWD	1998	108	147	01.98-04.03	■
2.0 i 16V (RFT (XU10J4/Z))	vehicles with ESP	Gasolina	FWD	1998	110	150	06.94-01.98	■
2.0 i 16V (RFY (XU10J4/Z))	vehicles with ESP	Gasolina	FWD	1998	112	152	03.93-01.98	■
2.1 Turbo D 12V (P8C (XUD11BTE))		Diesel	FWD	2088	80	109	06.95-02.99	■
2.1 Turbo D 12V	-10/98	Diesel	FWD	2088	80	109	01.98-02.99	■

### PEUGEOT

#### 406 (8C) 03.97-02.05

#### Coupe (Large family car-D Segment)

1.8		Gasolina	FWD	1761	82	112	10.97-03.99	■
2.0 16V (RFR (EW10J4))		Gasolina	FWD	1997	99	135	01.99-10.00	■
2.0 16V (RFV (XU10J4R))		Gasolina	FWD	1998	99	135	04.99-09.04	■
3.0 24V (XFZ (ES9J4))		Gasolina	FWD	2946	143	194	05.97-06.99	■
2.2 HDi (4HX (DW12TED4))		Diesel	FWD	2179	98	133	03.00-12.04	■

#### 406 (8E/F) 10.96-10.04

#### Estate (Large family car-D Segment)

2.0 16V (RFR (EW10J4))		Gasolina	FWD	1997	99	135	01.99-10.00	■
------------------------	--	----------	-----	------	----	-----	-------------	---

# LISTA DE APLICACIONES - BUYERS GUIDE

2.0 16V (RFN (EW10J4))		Gasolina	FWD	1997	100	136	10.00-10.04	■
2.0 16V HPi (RLZ (EW10D))		Gasolina	FWD	1997	103	140	05.01-10.04	■
2.0 16V (RFV (XU10J4R))		Gasolina	FWD	1998	97	132	10.96-10.04	■
2.0 (RGY (XU10J2TE))		Gasolina	FWD	1998	104	141	11.96-03.99	■
2.0 Turbo (RGX (XU10J2TE))		Gasolina	FWD	1998	108	147	10.96-10.04	■
2.2 (3FZ (EW12J4))		Gasolina	FWD	2230	116	158	07.00-10.04	■
3.0 24V (XFZ (ES9J4))		Gasolina	FWD	2946	140	190	10.96-10.04	■
3.0 V6 (XFX (ES9J4S))		Gasolina	FWD	2946	152	207	03.00-10.04	■
2.0 HDI 90 (RHY (DW10TD))		Diesel	FWD	1997	66	90	02.99-10.04	■
2.1 TD 12V (P8C (XUD11BTE))		Diesel	FWD	2088	80	109	10.96-10.04	■
2.2 HDi (4HX (DW12TED4))		Diesel	FWD	2179	98	133	03.00-10.04	■
<b>406 (8B) 08.95-01.05</b>					<b>Saloon (Large family car-D Segment)</b>			
2.0 16V (RFR (EW10J4))		Gasolina	FWD	1997	99	135	01.99-08.00	■
2.0 16V (RFN (EW10J4))		Gasolina	FWD	1997	100	136	08.00-06.04	■
2.0 16V HPi (RLZ (EW10D))		Gasolina	FWD	1997	103	140	05.01-05.04	■
2.0 16V (RFV (XU10J4R))		Gasolina	FWD	1998	97	132	11.95-05.04	■
2.0 (RGY (XU10J2TE))		Gasolina	FWD	1998	104	141	11.96-03.99	■
2.0 Turbo (RGX (XU10J2TE))		Gasolina	FWD	1998	108	147	04.96-05.04	■
2.2 (3FZ (EW12J4))		Gasolina	FWD	2230	116	158	07.00-05.04	■
3.0 24V (XFZ (ES9J4))		Gasolina	FWD	2946	140	190	10.96-05.04	■
3.0 24V (XFZ (ES9J4))		Gasolina	FWD	2946	143	194	01.98-06.99	■
3.0 V6 (XFX (ES9J4S))		Gasolina	FWD	2946	152	207	03.00-05.04	■
1.9 SL		Diesel	RWD	1905	51	69	09.97-03.99	■
1.9 D (DHW (XUD9SD))		Diesel	FWD	1905	55	75	10.96-05.04	■
1.9 TD (DHX (XUD9TE))		Diesel	FWD	1905	66	90	01.96-05.04	■
1.9 TD (DHY (XUD9TE))		Diesel	FWD	1905	68	92	01.96-05.04	■
1.9 TD (D8B (XUD9TE))		Diesel	FWD	1905	69	94	10.95-10.97	■
2.0 HDI 90 (RHY (DW10TD))		Diesel	FWD	1997	66	90	02.99-05.04	■
2.0 HDI 110 (RHS (DW10ATED))		Diesel	FWD	1997	79	107	08.01-05.04	■
2.0 HDI 110 (RHZ (DW10ATED))		Diesel	FWD	1997	79	107	08.01-05.04	■
2.0 HDI 110 (RHZ (DW10ATED))		Diesel	FWD	1997	80	109	06.98-08.01	■
2.1 TD 12V (P8C (XUD11BTE))		Diesel	FWD	2088	80	109	01.96-05.04	■
2.2 HDi (4HX (DW12TED4))		Diesel	FWD	2179	98	133	03.00-05.04	■
<b>806 (AF_) 06.94-02.03</b>					<b>Box Body/MPV (Large MPV-M1 Segment)</b>			
2.0 (AFRFNC)		Gasolina	FWD	1997	100	136	05.00-02.03	■
2.0 (AFRFVC)		Gasolina	FWD	1998	97	132	05.98-09.00	■
<b>806 (221) 06.94-08.02</b>					<b>MPV (Large MPV-M1 Segment)</b>			
2.0 16V (RFN (EW10J4))		Gasolina	FWD	1997	100	136	09.00-08.02	■
2.0 16V (RFV (XU10J4R))		Gasolina	FWD	1998	97	132	05.98-09.00	■