

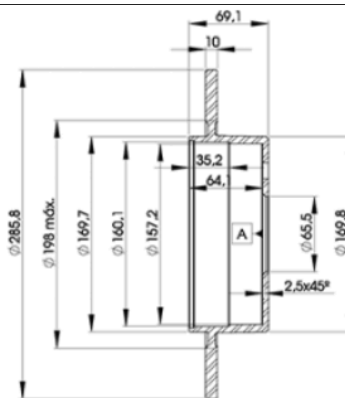
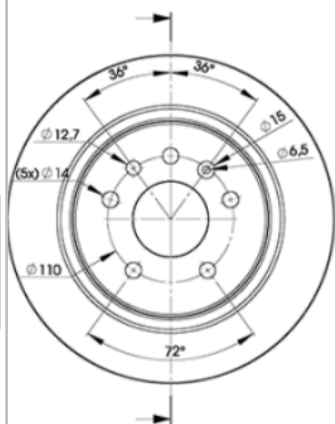
# LISTA DE APLICACIONES - BUYERS GUIDE

## 78BD7476-2



Weight: 9.896

O.E.M.	MAKE
12 763 591	SAAB
49 07 523	SAAB
50 57 476	SAAB
53 91 537	SAAB



## 78BD7476-2

E1 90R-02C0453/0106



Ø286x10x69.1

MAKE
BAIC
SAAB



Trac.	CC	Kw	CV
-------	----	----	----



Front / Rear

### BAIC

#### SENOVA D50 11.17-

Saloon ( )

1.5 (A151)	Gasolina	FWD	1499	85	116	11.17-	■
1.5 (A151-R1)	Gasolina	FWD	1499	110	150	07.19-	■

### SAAB

#### 9-5 (YS3E) 10.98-12.09

Estate (Executive car-E Segment)

2.0 T (B205E)		Gasolina	FWD	1985	110	150	10.98-12.09	■
2.0 T (B205L)	ch. X3025752	Gasolina	FWD	1985	136	185	07.00-07.01	■
2.0 T (B205E)	ch. X3025752	Gasolina	FWD	1985	141	192	10.98-07.00	■
2.3 T (B235E)		Gasolina	FWD	2290	125	170	10.98-12.09	■
2.3 T (B235E)	ch. X3025752	Gasolina	FWD	2290	136	185	01.01-12.09	■
2.3 Turbo (B235L)	ch. X3025752	Gasolina	FWD	2290	162	220	07.03-12.09	■
2.3 Turbo (B235R)	ch. X3025752	Gasolina	FWD	2290	169	230	10.99-09.01	■
2.3 Turbo (B235R)	ch. X3025752	Gasolina	FWD	2290	184	250	09.01-12.09	■
2.3 Turbo (B235R)	ch. X3025752	Gasolina	FWD	2290	191	260	01.06-12.09	■
2.3 Turbo (B235R)		Gasolina	FWD	2290	224	305	06.03-08.05	■
3.0 V6t (B308E)	ch. X3025752	Gasolina	FWD	2962	147	200	10.98-08.05	■
2.0 t Biopower (B205E)		Gasol./Etanol	FWD	1985	110	150	01.06-12.09	■
2.0 t Biopower (B205E)		Gasol./Etanol	FWD	1985	132	179	09.05-12.09	■
2.3 t BioPower (B235E)		Gasol./Etanol	FWD	2290	136	185	01.07-12.09	■
2.3 t BioPower (B235R)		Gasol./Etanol	FWD	2290	152	207	11.06-12.09	■
2.3 t BioPower (B235R)		Gasol./Etanol	FWD	2290	154	210	11.06-12.09	■

# LISTA DE APLICACIONES - BUYERS GUIDE

1.9 TiD (Z 19 DTH)	ch. X3025752	Diesel	FWD	1910	110	150	01.06-12.09	■
1.9 TiD (Z 19 DTR)		Diesel	FWD	1910	129	175	01.07-12.09	■
2.2 TiD (D223L)	ch. X3025752	Diesel	FWD	2171	88	120	03.02-12.09	■
3.0 TiD (D308L)	ch. X3025752	Diesel	FWD	2958	130	177	07.01-08.05	■
<b>9-5 (YS3E) 09.97-12.09</b>						<b>Saloon (Executive car-E Segment)</b>		
2.0 T (B205E)		Gasolina	FWD	1985	110	150	09.97-12.09	■
2.0 T (B205L)	ch. X3025752	Gasolina	FWD	1985	136	185	07.00-12.09	■
2.0 Turbo SE (B205E)		Gasolina	FWD	1985	141	192	10.98-07.00	■
2.3 T (B235E)		Gasolina	FWD	2290	125	170	09.97-12.03	■
2.3 Turbo (B235E)		Gasolina	FWD	2290	134	182	04.08-12.09	■
2.3 T (B235E)	ch. X3025752	Gasolina	FWD	2290	136	185	01.01-12.09	■
2.3 Turbo (B235L)	ch. X3025752	Gasolina	FWD	2290	162	220	07.03-12.09	■
2.3 Turbo (B235R)	ch. X3025752	Gasolina	FWD	2290	169	230	10.99-09.01	■
2.3 Turbo (B235R)	ch. X3025752	Gasolina	FWD	2290	184	250	09.01-12.09	■
2.3 Turbo (B235R)		Gasolina	FWD	2290	188	256	04.08-12.09	■
2.3 Turbo (B235R)	ch. X3025752	Gasolina	FWD	2290	191	260	11.05-12.09	■
2.3 Turbo (B235R)		Gasolina	FWD	2290	224	305	06.03-08.05	■
3.0 V6t (B308E)	ch. X3025752	Gasolina	FWD	2962	147	200	01.98-08.05	■
2.0 t Biopower (B205E)		Gasol./Etanol	FWD	1985	110	150	01.05-12.09	■
2.0 t Biopower (B205E)		Gasol./Etanol	FWD	1985	132	179	09.05-12.09	■
2.3 t BioPower (B235E)		Gasol./Etanol	FWD	2290	136	185	01.07-12.09	■
2.3 t BioPower (B235R)		Gasol./Etanol	FWD	2290	152	207	11.06-12.09	■
1.9 TiD (Z 19 DTH)	ch. X3025752	Diesel	FWD	1910	110	150	01.06-12.09	■
2.2 TiD (D223L)	ch. X3025752	Diesel	FWD	2171	88	120	03.02-12.09	■
3.0 TiD (D308L)	ch. X3025752	Diesel	FWD	2958	130	177	07.01-08.05	■