

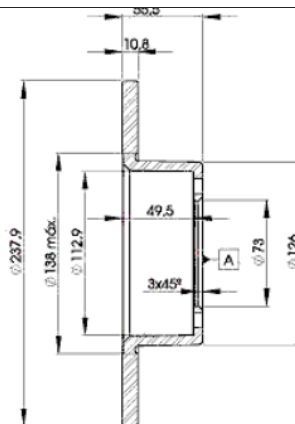
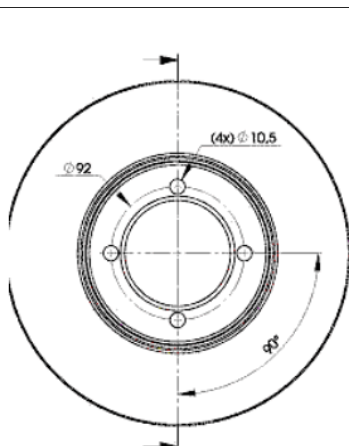
LISTA DE APLICACIONES - BUYERS GUIDE

78BD7739-2



Weight: 7.490

O.E.M.	MAKE
5 69 008	OPEL
5 69 011	OPEL
5 69 013	OPEL
5 69 018	OPEL
5 69 041	OPEL
90 065 903	VAUXHALL
90 272 326	VAUXHALL



78BD7739-2

E1 90R-02C0100/0562



Ø238x11x55.5

MAKE
BEDFORD
OPEL
VAUXHALL



Trac.	CC	Kw	CV
-------	----	----	----



Front / Rear

BEDFORD

CHEVANNE 06.76-12.82

Estate Van (Compact car-C Segment)

1.3 (13D)		Gasolina	RWD	1256	39	53	06.76-02.80	■
1.3 (LW4)		Gasolina	RWD	1256	39	53	06.76-02.80	■
1.3 (13D)		Gasolina	RWD	1256	40	54	03.80-12.82	■
1.3 (LW4)		Gasolina	RWD	1256	40	54	03.80-12.82	■
1.3 (13D)		Gasolina	RWD	1256	42	57	06.76-02.80	■
1.3 (LW4)		Gasolina	RWD	1256	42	57	06.76-02.80	■

OPEL

GT / OPEL 09.68-08.73

Coupe (Sports car-S Segment)

1.1 (11 SR)		Gasolina	RWD	1078	44	60	09.68-12.70	■
1.9 (19 S)		Gasolina	RWD	1897	66	90	09.68-08.73	■

GT II (M07) 06.07-

Convertible (Sports car-S Segment)

2.0 (G67) (Z 20 NHH)		Gasolina	RWD	1998	194	264	06.07-12.11	■
----------------------	--	----------	-----	------	-----	-----	-------------	---

KADETT B 09.65-08.73

Coupe (Compact car-C Segment)

1.1 (11 N)		Gasolina	RWD	1078	33	45	09.65-07.71	■
1.1 (11 N)		Gasolina	RWD	1078	37	50	08.71-08.73	■
1.1 (11 S)		Gasolina	RWD	1078	40	55	09.65-07.71	■
1.1 (11 SR)		Gasolina	RWD	1078	44	60	11.66-07.71	■
1.2 (12 S)	08/72-	Gasolina	RWD	1196	44	60	08.71-08.73	■
1.5 (15 NT)		Gasolina	RWD	1488	47	64	08.71-07.73	■
1.9 (19 S)	08/68-	Gasolina	RWD	1897	66	90	08.67-08.73	■

LISTA DE APLICACIONES - BUYERS GUIDE

KADETT B 09.65-08.73					Estate (Compact car-C Segment)			
1.1 (11 N)		Gasolina	RWD	1078	33	45	09.65-07.71	■
1.1 (11 N)		Gasolina	RWD	1078	37	50	08.71-08.73	■
1.1 (11 S)		Gasolina	RWD	1078	40	55	09.65-07.71	■
1.2 (12 S)	08/72-	Gasolina	RWD	1196	44	60	08.71-08.73	■
1.5 (15 S)		Gasolina	RWD	1488	47	64	08.71-07.73	■
KADETT B / RALLYE B 09.65-08.73					Saloon (Compact car-C Segment)			
1.1 (11 N)		Gasolina	RWD	1078	33	45	09.65-07.71	■
1.1 (11 N)		Gasolina	RWD	1078	37	50	08.71-08.73	■
1.1 S (11 S)		Gasolina	RWD	1078	40	55	09.65-07.71	■
1.1 SR (11 SR)		Gasolina	RWD	1078	44	60	11.66-07.71	■
1.2 S (12 S)	08/72-	Gasolina	RWD	1196	44	60	08.71-08.73	■
1.7 (17 S)	08/68-	Gasolina	RWD	1698	55	75	08.67-08.71	■
KADETT C 08.73-07.79					Coupe (Compact car-C Segment)			
1.0 (10 N)		Gasolina	RWD	993	29	40	01.74-07.79	■
1.2 (12 N)		Gasolina	RWD	1196	38	52	08.73-04.77	■
1.2 (12 N)		Gasolina	RWD	1196	40	54	08.73-07.79	■
1.2 S (12 S)		Gasolina	RWD	1196	44	60	08.73-07.79	■
2.0 GT/E (20 EH)		Gasolina	RWD	1979	85	115	08.77-07.79	■
KADETT C 08.73-07.79					Estate (Compact car-C Segment)			
1.0 (10 N)		Gasolina	RWD	993	29	40	01.74-07.79	■
1.2 (12 N)		Gasolina	RWD	1196	38	52	08.73-04.77	■
1.2 (12 N)		Gasolina	RWD	1196	40	54	08.73-07.79	■
1.2 S (12 S)		Gasolina	RWD	1196	44	60	08.73-07.79	■
KADETT C 08.73-07.79					Hatchback (Compact car-C Segment)			
1.0 (10 N)		Gasolina	RWD	993	29	40	05.75-07.79	■
1.2 (12 N)		Gasolina	RWD	1196	38	52	05.75-04.77	■
1.2 (12 N)		Gasolina	RWD	1196	40	54	07.76-07.79	■
1.2 S (12 S)		Gasolina	RWD	1196	44	60	08.73-07.79	■
KADETT C 08.73-07.79					Saloon (Compact car-C Segment)			
1.0 (10 N)		Gasolina	RWD	993	29	40	01.74-07.79	■
1.2 (12 N)		Gasolina	RWD	1196	38	52	08.73-04.77	■
1.2 (12 N)	09/78-	Gasolina	RWD	1196	40	55	08.73-07.79	■
1.2 S (12 S)		Gasolina	RWD	1196	44	60	08.73-07.79	■
KADETT E (T85) 09.84-08.91					Estate (Compact car-C Segment)			
1.8 (46)		Gasolina	FWD	1796	82	111	12.88-08.91	■
OLYMPIA III 08.67-08.71					Coupe (Compact car-C Segment)			
1.0 (11 SR)		Gasolina	RWD	1078	44	60	08.67-08.71	■
REKORD C 08.66-12.71					Coupe (Large family car-D Segment)			
1.7 S (17 S)		Gasolina	RWD	1698	55	75	08.66-12.71	■
1.9 (19 S)		Gasolina	RWD	1897	66	90	08.66-12.71	■
REKORD C 08.66-12.71					Estate (Large family car-D Segment)			
1.7 (17 N)		Gasolina	RWD	1698	44	60	08.66-12.71	■
1.7 (17 N)		Gasolina	RWD	1698	49	66	02.68-12.71	■
1.7 S (17 S)		Gasolina	RWD	1698	55	75	08.66-12.71	■
REKORD C 08.66-12.71					Saloon (Large family car-D Segment)			
1.7 (17 N)		Gasolina	RWD	1698	44	60	08.66-12.71	■

LISTA DE APLICACIONES - BUYERS GUIDE

1.7 (17 N)		Gasolina	RWD	1698	49	66	02.68-12.71	■
1.7 S (17 S)		Gasolina	RWD	1698	55	75	08.66-12.71	■
1.9 (19 S)		Gasolina	RWD	1897	66	90	08.66-12.71	■
REKORD D 01.72-08.77					Coupe (Large family car-D Segment)			
1.7 S (17 S)		Gasolina	RWD	1698	61	83	01.72-02.75	■
1.9 S (19 SH)		Gasolina	RWD	1897	71	97	01.72-02.75	■
REKORD D 01.72-08.77					Estate (Large family car-D Segment)			
1.7 (17 N)		Gasolina	RWD	1698	49	67	01.72-02.75	■
1.7 S (17 S)		Gasolina	RWD	1698	61	83	01.72-02.75	■
1.9 S (19 SH)		Gasolina	RWD	1897	71	97	01.72-02.75	■
2.0 D (20 D)		Diesel	RWD	1998	40	54	08.74-08.77	■
2.1 D (21 D)		Diesel	RWD	2068	44	60	09.72-08.77	■
REKORD D 01.72-08.77					Saloon (Large family car-D Segment)			
1.7 S (17 S)		Gasolina	RWD	1698	61	83	01.72-02.75	■
1.9 S (19 SH)		Gasolina	RWD	1897	71	97	01.72-02.75	■
2.0 D (20 D)		Diesel	RWD	1998	40	54	08.74-08.77	■
VAUXHALL								
CHEVETTE 03.75-12.85					Estate (Compact car-C Segment)			
1.3 (13 N)		Gasolina	RWD	1256	39	53	09.76-12.85	■
1300 (13 S)		Gasolina	RWD	1256	42	57	09.76-12.85	■
CHEVETTE 09.74-12.85					Saloon (Compact car-C Segment)			
1300 (13 N)		Gasolina	RWD	1256	39	53	03.75-12.85	■
1300 (13 S)		Gasolina	RWD	1256	42	57	09.74-12.85	■
1300 (LW4)		Gasolina	RWD	1256	42	57	09.74-12.85	■
CHEVETTE CC 03.75-12.85					Hatchback (Compact car-C Segment)			
1300 (13 N)		Gasolina	RWD	1256	39	53	03.75-12.85	■
1300 (13 S)		Gasolina	RWD	1256	42	57	03.75-12.85	■
VECTRA (B) (J96) 08.95-03.02					Estate (Large family car-D Segment)			
1.8 Dualfuel (F35) (Z 18 XE)		Gasol./Gas (LPG)	FWD	1796	92	125	09.00-03.02	■
VECTRA (B) (J96) 08.95-07.03					Hatchback (Large family car-D Segment)			
1.8 Dualfuel (F68) (Z 18 XE)		Gasol./Gas (LPG)	FWD	1796	92	125	09.00-07.03	■
VECTRA (B) (J96) 08.95-03.02					Saloon (Large family car-D Segment)			
1.8 Dualfuel (F19) (Z 18 XE)		Gasol./Gas (LPG)	FWD	1796	92	125	09.00-03.02	■