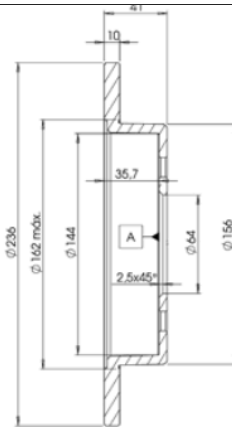


LISTA DE APLICACIONES - BUYERS GUIDE

78BD7763-2



Weight: 6.240



78BD7763-2

E1 90R-02C0100/0027



Ø236x10x41

O.E.M.	MAKE
MB 857763	MITSUBISHI

MAKE
MITSUBISHI
PROTON
SOUEAST



Trac.	CC	Kw	CV			Front / Rear
-------	----	----	----	--	--	--------------

MITSUBISHI

							Hatchback (Large family car-D Segment)				
CARISMA (DA_) 05.95-06.06											
1.6 (DA1A) (4G92 (SOHC 16V))	-04/99	Gasolina	FWD	1597	66	90	07.95-06.06			■	
1.6 (DA1A) (4G92 (SOHC 16V))	-04/99	Gasolina	FWD	1597	70	95	12.98-06.06			■	
1.6 (DA1A) (4G92 (SOHC 16V))	-04/99	Gasolina	FWD	1597	73	99	05.97-06.06			■	
1.9 TD (DA4A) (F8QT)	-04/99	Diesel	FWD	1870	66	90	10.96-09.00			■	
CARISMA (DA_) 09.96-06.06							Saloon (Large family car-D Segment)				
1.3 16V (4G13 (16V))		Gasolina	FWD	1299	60	82	09.00-10.04			■	
1.6 (DA1A) (4G92 (SOHC 16V))	-04/99	Gasolina	FWD	1597	66	90	09.96-06.06			■	
1.6 (DA1A) (4G92 (SOHC 16V))	-04/99	Gasolina	FWD	1597	70	95	12.98-06.06			■	
1.6 (DA1A) (4G92 (SOHC 16V))	-04/99	Gasolina	FWD	1597	73	99	05.97-06.06			■	
2.0 16V GT EVO VI/VII (4G63 TURBO)		Gasolina	4WD	1997	206	280	11.99-06.06			■	
1.9 TD (DA4A) (F8QT)	-04/99	Diesel	FWD	1870	66	90	10.96-09.00			■	
COLT II (CA_A) 03.92-04.96							Hatchback (Supermini car-B Segment)				
1.3 GLi 12V (CA1A) (4G13 (12V))		Gasolina	FWD	1299	55	75	04.92-04.96			■	
1.6 (CA4A) (4G92 (SOHC 16V))	vehicles with ABS	Gasolina	FWD	1597	66	90	02.94-04.96			■	
1.6 GLXi 16V (CA4A) (4G92 (SOHC 16V))	vehicles with ABS	Gasolina	FWD	1597	83	113	04.92-04.96			■	
1.6 4WD (CC4A) (4G92 (SOHC 16V))	vehicles with ABS	Gasolina	4WD	1597	84	114	08.93-08.95			■	
1.8 GTi 16V (CA5A) (4G93 (DOHC 16V))		Gasolina	FWD	1834	103	140	04.92-04.96			■	
LANCER III (C6_A, C7_A) 04.88-05.94							Hatchback (Supermini car-B Segment)				
1.6 16V (C76A, C66A) (4G92 (SOHC 16V))	vehicles with ABS	Gasolina	FWD	1597	83	113	06.92-05.94			■	
1.6 4WD (C76A, C66A) (4G92 (SOHC 16V))	vehicles with ABS	Gasolina	4WD	1597	84	114	06.92-11.93			■	
2.0 D (C67A) (4D68)		Diesel	FWD	1998	50	68	06.92-07.93			■	

LISTA DE APLICACIONES - BUYERS GUIDE

LANCER III / LIBERO (CB_A, CD_A, CE_A) 07.91-12.96						Saloon (Supermini car-B Segment)			
1.3 (CB1A) (4G13 (12V))	08/93-	Gasolina	FWD	1299	55	75	06.92-12.96	■	
1.5 (CB2A) (4G15 (12V))		Gasolina	FWD	1468	65	88	09.92-07.96	■	
1.6 (CB4A) (4G92 (SOHC 16V))		Gasolina	FWD	1597	66	90	02.94-12.96	■	
1.6 16V (CB4A) (4G92 (SOHC 16V))	vehicles with ABS	Gasolina	FWD	1597	83	113	06.92-12.96	■	
1.6 16V 4WD (CD4A) (4G92 (SOHC 16V))		Gasolina	4WD	1597	83	113	06.92-12.96	■	
1.6 16V (CB4A) (4G92 (SOHC 16V))		Gasolina	FWD	1597	88	120	06.92-12.96	■	
1.8 i Turbo AWD (CD5A) (4G93T)		Gasolina	4WD	1834	141	192	11.92-07.96	■	
EVO I (CD9A) (4G63 TURBO)		Gasolina	4WD	1997	184	250	10.92-12.93	■	
2.0 Diesel (CB8A) (4D68)		Diesel	FWD	1998	50	68	06.92-12.96	■	
LANCER III-IV (CJ_, CP_, CK_) 09.95-12.03						Saloon (Compact car-C Segment)			
1.3 12V (CK1A) (4G13 (12V))	06/00-, vehicles with ABS	Gasolina	FWD	1299	55	75	12.95-08.03	■	
1.5 16V (CK2A)		Gasolina	FWD	1468	81	110	09.95-08.99	■	
LANCER III-IV / LIBERO Station Wagon (CB_W, CD_W) 09.92-10.03						Estate (Compact car-C Segment)			
1.5 (CB2W) (4G15 (12V))		Gasolina	FWD	1468	63	86	03.95-10.03	■	
1.6 16V (CB4W) (4G92 (SOHC 16V))		Gasolina	FWD	1597	83	113	12.92-10.03	■	
1.8 i (CB5W) (4G93 (SOHC 16V))		Gasolina	FWD	1834	88	120	03.95-10.03	■	
2.0 D (CB8W) (4D68)	vehicles with ABS	Diesel	FWD	1998	50	68	12.92-10.03	■	
MIRAGE IV (CJ_A, CL_A, CA_A, CC_A) 07.91-07.03						Hatchback (Supermini car-B Segment)			
1.6	vehicles with ABS	Gasolina	FWD	1597	84	114	09.99-07.03	■	
1.6 (4G92 (SOHC 16V))		Gasolina	FWD	1597	84	114	12.91-08.95	■	
1.6 4WD (CL4A) (4G92 (SOHC 16V))		Gasolina	4WD	1597	84	114	03.92-07.93	■	
1.6 (CJ4A) (4G92 (SOHC 16V))	vehicles with ABS	Gasolina	FWD	1597	88	119	12.91-08.95	■	
1.6 4WD (CL4A) (4G92 (SOHC 16V))		Gasolina	4WD	1597	88	119	12.91-08.95	■	
MIRAGE V (CJ - CM) 09.95-08.02						Coupe (Supermini car-B Segment)			
1.5 (CJ2A) (4G15 (16V))		Gasolina	FWD	1468	81	110	09.95-08.99	■	
MIRAGE V (CJ_A) 09.95-07.03						Hatchback (Supermini car-B Segment)			
1.5 (CJ2A) (4G15 (16V))		Gasolina	FWD	1468	81	110	09.95-08.99	■	
1.6 (CJ4A) (4G92 (SOHC 16V))	vehicles with ABS	Gasolina	FWD	1597	84	114	09.99-07.03	■	
MIRAGE V (CK_A) 09.95-07.03						Saloon (Supermini car-B Segment)			
1.5 (CK2A) (4G15 (12V))		Gasolina	FWD	1468	69	94	09.96-12.00	■	
1.5 (CK2A) (4G15 (16V))		Gasolina	FWD	1468	81	110	09.95-12.00	■	
PROTON									
AEROBACK / ISWARA / MPI (C2_A, C9_L) 10.88-12.08						Hatchback (Compact car-C Segment)			
1.3 (4G13- P)		Gasolina	FWD	1298	50	68	10.88-06.91	■	
1.3 (4G13)		Gasolina	FWD	1298	50	68	01.91-09.93	■	
1.3 (4G13)		Gasolina	FWD	1298	55	75	10.88-12.02	■	
1.5 (4 G 15)		Gasolina	FWD	1468	55	75	01.91-09.93	■	
1.5		Gasolina	FWD	1468	55	75	10.88-06.91	■	
1.5	10/92-, vehicles with ABS	Gasolina	FWD	1468	66	90	01.91-11.96	■	
1.5 LX (4 G 15 M)		Gasolina	FWD	1468	66	90	10.88-11.96	■	
SALOON / ISWARA / MPI (C2_S) 01.89-12.08						Saloon (Compact car-C Segment)			
1.3 (4G13)		Gasolina	FWD	1298	50	68	01.91-09.93	■	
1.3 (4G13-M)		Gasolina	FWD	1298	55	75	10.92-06.96	■	
1.5		Gasolina	FWD	1468	55	75	01.91-09.93	■	
1.5	10/92-, vehicles with ABS	Gasolina	FWD	1468	66	90	01.91-11.96	■	
SOUEAST									

LISTA DE APLICACIONES - BUYERS GUIDE

V3 LINGYUE 10.08-						Saloon ()		
1.5		Gasolina	FWD	1488	81	110	10.08-12.14	■