

# LISTA DE APLICACIONES - BUYERS GUIDE

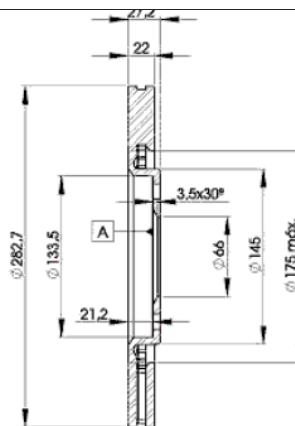
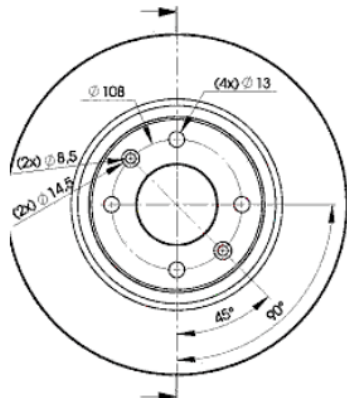
## 78BD7810-2



8 424073 148568

Weight: 11.572

O.E.M.	MAKE
4246.G1	PEUGEOT
4246.T9	CITROËN
4246.V0	CITROËN
4246.V3	PEUGEOT
95 667 810	CITROËN



## 78BD7810-2



Ø283x22x27.5

MAKE
CITROËN
PEUGEOT



Trac.	CC	Kw	CV	
				Front / Rear

### CITROËN

#### XANTIA (X2\_) 12.97-04.03

#### Estate Van (Large family car-D Segment)

1.9 DT		Diesel	FWD	1905	66	90	12.97-12.00	■
2.0 HDi (RHY (DW10TD))		Diesel	FWD	1997	66	90	06.99-04.03	■

#### XANTIA (X1\_, X2\_) 06.95-04.03

#### Estate (Large family car-D Segment)

2.0 i (RFX (XU10J2C))		Gasolina	FWD	1998	89	121	06.95-04.03	■
2.0 i	-10/00	Gasolina	FWD	1998	89	121	01.98-04.03	■
2.0 i 16V (RFV (XU10J4R))		Gasolina	FWD	1998	97	132	06.95-04.03	■
2.0 i 16V	-10/00	Gasolina	FWD	1998	97	132	01.98-04.03	■
1.9 SD (DHW (XUD9SD))		Diesel	FWD	1905	55	75	04.97-04.03	■
1.9 SD	Manual Transmission	Diesel	FWD	1905	55	75	01.98-04.03	■
1.9 Turbo D (D8B (XUD9TF))		Diesel	FWD	1905	66	90	06.95-04.03	■
1.9 Turbo D (DHX (XUD9TF/BTF))		Diesel	FWD	1905	66	90	06.95-04.03	■
1.9 Turbo D (DHY (XUD9TE/Y))		Diesel	FWD	1905	66	90	06.95-04.03	■
1.9 Turbo D	-10/00, Manual Transmission	Diesel	FWD	1905	66	90	01.98-04.03	■

#### XANTIA (X1\_, X2\_) 03.93-04.03

#### Hatchback (Large family car-D Segment)

2.0 i (RFX (XU10J2C))		Gasolina	FWD	1998	89	121	03.93-04.03	■
2.0 i	-10/00	Gasolina	FWD	1998	89	121	01.98-04.03	■
2.0 (RFX XU10J2C/Z L3)		Gasolina	FWD	1998	95	129	03.93-05.95	■
2.0 i 16V (RFV (XU10J4R))	vehicles without ESP	Gasolina	FWD	1998	97	132	06.95-04.03	■
2.0 i 16V	-10/00	Gasolina	FWD	1998	97	132	01.98-04.03	■
2.0 16V		Gasolina	FWD	1998	99	135	06.98-11.00	■
2.0 i 16V (RFT (XU10J4/Z))	vehicles without ESP	Gasolina	FWD	1998	110	150	06.94-01.98	■
2.0 i 16V (RFY (XU10J4/Z))	vehicles without ESP	Gasolina	FWD	1998	112	152	03.93-01.98	■

# LISTA DE APLICACIONES - BUYERS GUIDE

1.9 Turbo D (DHX (XUD9TF/BTF))	-07/97	Diesel	FWD	1905	66	90	05.93-04.03	■
1.9 Turbo D (DHY (XUD9TE/Y))	-07/97	Diesel	FWD	1905	66	90	05.93-04.03	■
1.9 Turbo D	-12/00, Manual Transmission	Diesel	FWD	1905	66	90	01.98-04.03	■
<b>XSARA (N0) 01.98-04.05</b>					<b>Coupe (Compact car-C Segment)</b>			
2.0 16V (RFN (EW10J4))	-12/01	Gasolina	FWD	1997	100	136	09.00-03.05	■
2.0		Gasolina	FWD	1998	97	132	08.98-08.00	■
2.0 HDI 109 (RHZ (DW10ATED))	-12/01	Diesel	FWD	1997	80	109	05.01-03.05	■
<b>XSARA (N2) 10.97-03.10</b>					<b>Estate (Compact car-C Segment)</b>			
2.0 HDI 109 (RHZ (DW10ATED))	-12/01	Diesel	FWD	1997	80	109	05.01-08.05	■
<b>XSARA (N3_) 05.98-03.05</b>					<b>Hatchback Van (Compact car-C Segment)</b>			
2.0 HDi (RHY (DW10TD))		Diesel	FWD	1997	66	90	09.00-03.05	■
<b>XSARA (N1) 04.97-12.05</b>					<b>Hatchback (Compact car-C Segment)</b>			
2.0 16V		Gasolina	FWD	1998	120	163	04.97-09.00	■
2.0 HDI 109 (RHZ (DW10ATED))	-12/01	Diesel	FWD	1997	80	109	05.01-03.05	■
<b>ZX (N2) 03.91-07.99</b>					<b>Hatchback (Compact car-C Segment)</b>			
2.0 i 16V (RFT (XU10J4/Z))	09/96-	Gasolina	FWD	1998	110	150	06.94-06.97	■
2.0 i 16V (RFS (XU10J4RS))	09/96-	Gasolina	FWD	1998	120	163	05.96-06.97	■
2.0 (RFS (XU10J4RS))		Gasolina	FWD	1998	122	166	09.96-10.97	■
<b>PEUGEOT</b>								
<b>405 II (4B) 01.92-12.99</b>					<b>Saloon (Large family car-D Segment)</b>			
2.0 T 16 X4 (RGZ (XU10J4TE/Z))		Gasolina	4WD	1998	144	196	08.92-10.95	■