

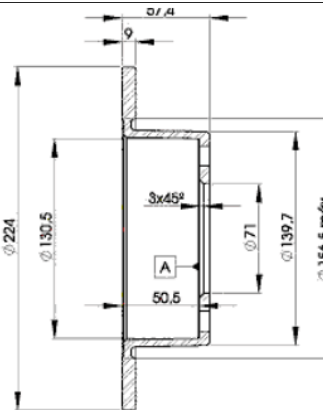
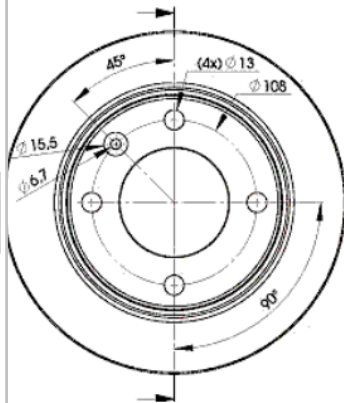
# LISTA DE APLICACIONES - BUYERS GUIDE

## 78BD7811-2



Weight: 5.824

O.E.M.	MAKE
08 572 910	CITROËN
95 667 811	CITROËN



## 78BD7811-2



Ø224x9x57.5

**MAKE**  
CITROËN



Trac.	CC	Kw	CV
-------	----	----	----



Front / Rear

### CITROËN

#### XANTIA (X1\_, X2\_) 06.95-04.03

#### Estate (Large family car-D Segment)

2.0 Turbo (RGX (XU10J2TE))		Gasolina	FWD	1998	108	147	06.95-04.03	■
2.0 Turbo	-10/00	Gasolina	FWD	1998	108	147	01.98-04.03	■
3.0 V6 (XFZ (ES9J4))	-10/00	Gasolina	FWD	2946	140	190	01.98-04.03	■
2.0 HDI 90 (RHY (DW10TD))	-10/00	Diesel	FWD	1997	66	90	03.99-04.03	■
2.0 HDI 109 (RHZ (DW10ATED))	-10/00	Diesel	FWD	1997	80	109	02.99-04.03	■
2.1 Turbo D 12V (P8C (XUD11BTE))		Diesel	FWD	2088	80	109	06.96-02.99	■
2.1 Turbo D 12V		Diesel	FWD	2088	80	109	01.98-02.99	■

#### XANTIA (X1\_, X2\_) 03.93-04.03

#### Hatchback (Large family car-D Segment)

1.6 i (BFZ (XU5JP))		Gasolina	FWD	1580	65	88	03.93-03.01	■
1.8 i (LFX (XU7JB))		Gasolina	FWD	1761	66	90	04.97-04.03	■
1.8 i	-10/00	Gasolina	FWD	1761	66	90	01.98-04.03	■
1.8 i (LFZ (XU7JP))		Gasolina	FWD	1761	74	101	03.93-01.98	■
1.8 i 16V (LFY (XU7JP4))		Gasolina	FWD	1761	81	110	06.95-12.01	■
1.8 i 16V	-10/00	Gasolina	FWD	1761	81	110	01.98-04.03	■
2.0 i (RFX (XU10J2C))		Gasolina	FWD	1998	89	121	03.93-04.03	■
2.0 (RFX XU10J2C/Z L3)		Gasolina	FWD	1998	95	129	03.93-05.95	■
2.0 i 16V (RFV (XU10J4R))		Gasolina	FWD	1998	97	132	06.95-04.03	■
2.0 16V		Gasolina	FWD	1998	99	135	06.98-11.00	■
2.0 Turbo (RGX (XU10J2TE))		Gasolina	FWD	1998	108	147	06.95-04.03	■
2.0 Turbo		Gasolina	FWD	1998	108	147	01.98-04.03	■
2.0 i 16V (RFT (XU10J4/Z))		Gasolina	FWD	1998	110	150	06.94-01.98	■
2.0 i 16V (RFY (XU10J4/Z))		Gasolina	FWD	1998	112	152	03.93-01.98	■

## LISTA DE APLICACIONES - BUYERS GUIDE

3.0 i 24V (XFZ (ES9J4))		Gasolina	FWD	2946	140	190	01.97-04.03
3.0 V6	-10/00	Gasolina	FWD	2946	140	190	01.98-04.03
1.9 D (DJZ (XUD9A))		Diesel	FWD	1905	50	68	06.94-01.98
1.9 D (D9B (XUD9A/L))		Diesel	FWD	1905	51	69	06.94-01.98
1.9 SD (DHW (XUD9SD))		Diesel	FWD	1905	55	75	02.96-04.03
1.9 SD	-10/00	Diesel	FWD	1905	55	75	01.98-04.03
1.9 Turbo D (DHX (XUD9TF/BTF))		Diesel	FWD	1905	66	90	05.93-04.03
1.9 Turbo D (DHY (XUD9TE/Y))		Diesel	FWD	1905	66	90	05.93-04.03
2.0 HDI 90 (RHY (DW10TD))		Diesel	FWD	1997	66	90	03.99-04.03
2.0 HDI 109 (RHZ (DW10ATED))		Diesel	FWD	1997	80	109	02.99-04.03
2.1 Turbo D 12V (P8C (XUD11BTE))		Diesel	FWD	2088	80	109	06.95-02.99
2.1 Turbo D 12V		Diesel	FWD	2088	80	109	01.98-02.99

