

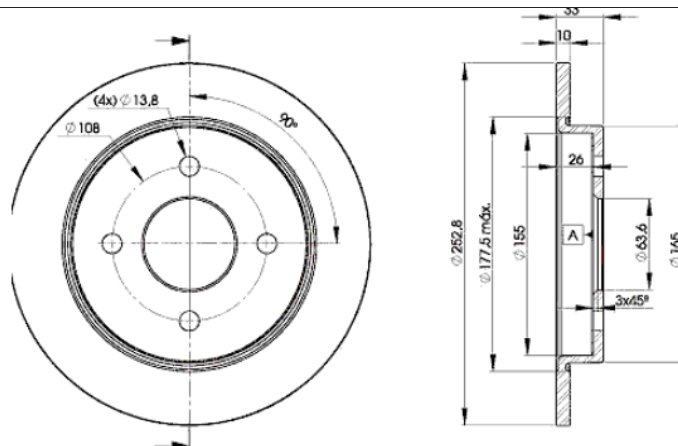
LISTA DE APLICACIONES - BUYERS GUIDE

78BD7969-2



8 424073 148681

Weight: 6.912



78BD7969-2

E1 90R-02C0415/0089



Ø252.5x10x33

MAKE

FORD

FORD USA

TVR



Trac.	CC	Kw	CV
-------	----	----	----



Front / Rear

FORD

FIESTA V / IKON (JH_, JD_) 11.01-12.14

Hatchback (Supermini car-B Segment)

1.6	Gasolina	FWD	1597	70	95	06.08-12.11	■
ST150 (N4JB)	Gasolina	FWD	1999	110	150	03.05-06.08	■

FIESTA VI (B299) 08.08-

Hatchback Van (LCVs-N1 Segment)

1.0 (XMJA)	Gasolina	FWD	998	48	65	01.13-04.17	■
1.0 (XMJB)	Gasolina	FWD	998	48	65	01.13-04.17	■
1.0 (XMJC)	Gasolina	FWD	998	48	65	01.13-04.17	■
1.0 (XMJD)	Gasolina	FWD	998	48	65	01.13-04.17	■
1.0 (P4JA)	Gasolina	FWD	998	59	80	10.12-04.17	■
1.0 (P4JB)	Gasolina	FWD	998	59	80	10.12-04.17	■
1.0 (P4JC)	Gasolina	FWD	998	59	80	10.12-04.17	■
1.0 (P4JD)	Gasolina	FWD	998	59	80	10.12-04.17	■
1.0 EcoBoost (SFJA)	Gasolina	FWD	998	74	100	01.13-04.17	■
1.0 EcoBoost (SFJB)	Gasolina	FWD	998	74	100	01.13-04.17	■
1.0 EcoBoost (SFJC)	Gasolina	FWD	998	74	100	01.13-04.17	■
1.0 EcoBoost (SFJD)	Gasolina	FWD	998	74	100	01.13-04.17	■
1.0 EcoBoost (M1JE)	Gasolina	FWD	998	92	125	09.12-04.17	■
1.0 EcoBoost (M1JH)	Gasolina	FWD	998	92	125	09.12-04.17	■
1.0 EcoBoost (YYJA)	Gasolina	FWD	998	103	140	05.14-04.17	■
1.0 EcoBoost (YYJB)	Gasolina	FWD	998	103	140	05.14-04.17	■
1.25 (SNJA)	Gasolina	FWD	1242	60	82	01.09-04.17	■
1.25 (SNJB)	Gasolina	FWD	1242	60	82	01.09-04.17	■
1.25 (SNJC)	Gasolina	FWD	1242	60	82	01.09-04.17	■

LISTA DE APLICACIONES - BUYERS GUIDE

1.25 (SNJD)		Gasolina	FWD	1242	60	82	01.09-04.17	■
1.6 ST (JTJA)		Gasolina	FWD	1596	134	182	03.13-04.17	■
1.6 ST (JTJB)		Gasolina	FWD	1596	134	182	03.13-04.17	■
1.4 TDCi (F6JB)		Diesel	FWD	1399	50	68	01.09-04.17	■
1.4 TDCi (F6JD)		Diesel	FWD	1399	50	68	01.09-04.17	■
1.4 TDCi (F6JD)		Diesel	FWD	1399	51	70	07.10-04.17	■
1.4 TDCi (KVJA)		Diesel	FWD	1399	51	70	07.10-04.17	■
1.5 TDCi (UGJC)		Diesel	FWD	1499	55	75	10.12-04.17	■
1.5 TDCi (XUJA)		Diesel	FWD	1499	55	75	10.12-04.17	■
1.5 TDCi (XUJB)		Diesel	FWD	1499	55	75	10.12-04.17	■
1.5 TDCi (XVJB)		Diesel	FWD	1499	70	95	05.15-04.17	■
1.5 TDCi (XVJC)		Diesel	FWD	1499	70	95	05.15-04.17	■
1.6 TDCi (HHJC)		Diesel	FWD	1560	66	90	01.09-04.17	■
1.6 TDCi (HHJD)		Diesel	FWD	1560	66	90	01.09-04.17	■
1.6 TDCi (HHJE)		Diesel	FWD	1560	66	90	01.09-04.17	■
1.6 TDCi (T3JA)		Diesel	FWD	1560	70	95	02.10-05.15	■
1.6 TDCi (TZJA)		Diesel	FWD	1560	70	95	02.10-05.15	■
1.6 TDCi (TZJB)		Diesel	FWD	1560	70	95	02.10-05.15	■
FIESTA VI (CB1, CCN) 06.08-					Hatchback (Supermini car-B Segment)			
1.0 (XMJA)		Gasolina	FWD	998	48	65	01.13-04.17	■
1.0 (XMJB)		Gasolina	FWD	998	48	65	01.13-04.17	■
1.0 (XMJC)		Gasolina	FWD	998	48	65	01.13-04.17	■
1.0 (XMJD)		Gasolina	FWD	998	48	65	01.13-04.17	■
1.0 (P4JA)		Gasolina	FWD	998	59	80	10.12-04.17	■
1.0 (P4JB)		Gasolina	FWD	998	59	80	10.12-04.17	■
1.0 (P4JC)		Gasolina	FWD	998	59	80	10.12-04.17	■
1.0 (P4JD)		Gasolina	FWD	998	59	80	10.12-04.17	■
1.0 EcoBoost (SFJA)		Gasolina	FWD	998	74	100	01.13-04.17	■
1.0 EcoBoost (SFJB)		Gasolina	FWD	998	74	100	01.13-04.17	■
1.0 EcoBoost (SFJC)		Gasolina	FWD	998	74	100	01.13-04.17	■
1.0 EcoBoost (SFJD)		Gasolina	FWD	998	74	100	01.13-04.17	■
1.0 EcoBoost (M1JE)		Gasolina	FWD	998	92	125	09.12-04.17	■
1.0 EcoBoost (M1JH)		Gasolina	FWD	998	92	125	09.12-04.17	■
1.0 Sport (YYJA)		Gasolina	FWD	998	103	140	05.14-04.17	■
1.0 Sport (YYJB)		Gasolina	FWD	998	103	140	05.14-04.17	■
1.0		Gasolina	FWD	999	51	69	04.10-	■
1.0 Flex		Gasolina	FWD	999	51	69	04.10-	■
1.0 Flex		Gasolina	FWD	999	54	73	04.10-	■
1.25 (STJA)		Gasolina	FWD	1242	44	60	06.08-04.17	■
1.25 (STJB)		Gasolina	FWD	1242	44	60	06.08-04.17	■
1.25 (STJC)		Gasolina	FWD	1242	44	60	06.08-04.17	■
1.25 (STJD)		Gasolina	FWD	1242	44	60	06.08-04.17	■
1.25 (SNJA)		Gasolina	FWD	1242	60	82	06.08-04.17	■
1.25 (SNJB)		Gasolina	FWD	1242	60	82	06.08-04.17	■
1.25 (SNJC)		Gasolina	FWD	1242	60	82	06.08-04.17	■
1.25 (SNJD)		Gasolina	FWD	1242	60	82	06.08-04.17	■
1.4 (RTJA)		Gasolina	FWD	1388	71	97	10.08-04.17	■
1.4 (RTJB)		Gasolina	FWD	1388	71	97	10.08-04.17	■
1.4 (SPJA)		Gasolina	FWD	1388	71	97	10.08-04.17	■
1.4 (SPJC)		Gasolina	FWD	1388	71	97	10.08-04.17	■
1.4 (SPJE)		Gasolina	FWD	1388	71	97	10.08-04.17	■

LISTA DE APLICACIONES - BUYERS GUIDE

1.5 Duratec		Gasolina	FWD	1498	82	112	09.15-	■
1.6 (XTJA)		Gasolina	FWD	1596	62	85	03.15-04.17	■
1.6 Ti (IQJA)		Gasolina	FWD	1596	77	105	09.12-04.17	■
1.6 Ti (IQJC)		Gasolina	FWD	1596	77	105	09.12-04.17	■
1.6 Ti (IQJE)		Gasolina	FWD	1596	77	105	09.12-04.17	■
1.6		Gasolina	FWD	1596	81	110	09.10-	■
1.6 Flexfuel		Gasolina	FWD	1596	85	116	06.10-	■
1.6 Ti (HXJA)		Gasolina	FWD	1596	88	120	06.08-01.18	■
1.6 Ti (HXJB)		Gasolina	FWD	1596	88	120	06.08-01.18	■
1.6 Ti (HXJE)		Gasolina	FWD	1596	88	120	06.08-01.18	■
1.6 (HXJA)		Gasolina	FWD	1596	89	121	10.10-04.17	■
1.6 Ti (U5JA)		Gasolina	FWD	1596	99	134	12.10-04.17	■
1.6 ST (JTJA)		Gasolina	FWD	1596	134	182	03.13-04.17	■
1.6 ST (JTJB)		Gasolina	FWD	1596	134	182	03.13-04.17	■
1.6 ST200 (JTJC)		Gasolina	FWD	1596	147	200	04.16-04.17	■
1.6		Gasolina	FWD	1597	72	98	04.10-	■
1.6		Gasolina	FWD	1597	90	122	01.11-04.17	■
1.6 Flex		Gasolina	FWD	1598	74	101	04.10-	■
1.4 LPG (RTJA)		Gasol./Gas (LPG)	FWD	1388	68	92	01.09-04.17	■
1.4 LPG (RTJB)		Gasol./Gas (LPG)	FWD	1388	68	92	01.09-04.17	■
1.4 LPG (RTJD)		Gasol./Gas (LPG)	FWD	1388	68	92	01.09-04.17	■
1.4 LPG (RTJA)		Gasol./Gas (LPG)	FWD	1388	71	97	01.09-04.17	■
1.4 LPG (RTJB)		Gasol./Gas (LPG)	FWD	1388	71	97	01.09-04.17	■
1.4 LPG (RTJD)		Gasol./Gas (LPG)	FWD	1388	71	97	01.09-04.17	■
1.4 LPG (SPJA)		Gasol./Gas (LPG)	FWD	1388	71	97	01.09-04.17	■
1.4 LPG (SPJC)		Gasol./Gas (LPG)	FWD	1388	71	97	01.09-04.17	■
1.4 LPG (SPJE)		Gasol./Gas (LPG)	FWD	1388	71	97	01.09-04.17	■
1.4 TDCi (F6JB)		Diesel	FWD	1399	50	68	08.08-09.12	■
1.4 TDCi (F6JD)		Diesel	FWD	1399	50	68	08.08-09.12	■
1.4 TDCi (F6JD)		Diesel	FWD	1399	51	70	07.10-09.12	■
1.4 TDCi (KVJA)		Diesel	FWD	1399	51	70	07.10-09.12	■
1.5 TDCi (UGJC)		Diesel	FWD	1499	55	75	09.12-04.17	■
1.5 TDCi (XUJA)		Diesel	FWD	1499	55	75	09.12-04.17	■
1.5 TDCi (XUJB)		Diesel	FWD	1499	55	75	09.12-04.17	■
1.5 TDCi (XVJB)		Diesel	FWD	1499	70	95	05.15-04.17	■
1.5 TDCi (XVJC)		Diesel	FWD	1499	70	95	05.15-04.17	■
1.6 TDCi (HHJF)		Diesel	FWD	1560	55	75	06.08-12.12	■
1.6 TDCi (UBJA)		Diesel	FWD	1560	55	75	06.08-12.12	■
1.6 TDCi (HHJC)		Diesel	FWD	1560	66	90	06.08-12.12	■
1.6 TDCi (HHJD)		Diesel	FWD	1560	66	90	06.08-12.12	■
1.6 TDCi (HHJE)		Diesel	FWD	1560	66	90	06.08-12.12	■
1.6 TDCi (T3JA)		Diesel	FWD	1560	70	95	02.10-12.15	■
1.6 TDCi (TZJA)		Diesel	FWD	1560	70	95	02.10-12.15	■
1.6 TDCi (TZJB)		Diesel	FWD	1560	70	95	02.10-12.15	■
FIESTA VI (B299) 04.10-					Saloon (Supermini car-B Segment)			
1.0 Flex		Gasolina	FWD	999	51	69	04.10-	■
1.0 Flex		Gasolina	FWD	999	54	73	04.10-	■

LISTA DE APLICACIONES - BUYERS GUIDE

1.25		Gasolina	FWD	1242	44	60	10.12-	■
1.4		Gasolina	FWD	1388	70	95	10.10-04.17	■
1.5 Duratec		Gasolina	FWD	1498	82	112	09.15-	■
1.6 (XTJA)		Gasolina	FWD	1596	62	85	03.15-04.17	■
1.6 Ti (IQJA)		Gasolina	FWD	1596	77	105	03.15-04.17	■
1.6 Ti (IQJC)		Gasolina	FWD	1596	77	105	03.15-04.17	■
1.6 Ti (IQJE)		Gasolina	FWD	1596	77	105	03.15-04.17	■
1.6 Flex		Gasolina	FWD	1596	79	107	04.10-	■
1.6		Gasolina	FWD	1596	81	110	09.10-04.17	■
1.6 Flex		Gasolina	FWD	1596	85	116	06.10-	■
1.6 Ti (HXJA)		Gasolina	FWD	1596	88	120	04.10-04.17	■
1.6 Ti (HXJB)		Gasolina	FWD	1596	88	120	04.10-04.17	■
1.6 Ti (HXJE)		Gasolina	FWD	1596	88	120	04.10-04.17	■
1.6		Gasolina	FWD	1596	89	121	10.10-	■
1.6 Flex		Gasolina	FWD	1596	96	130	11.14-	■
1.6		Gasolina	FWD	1597	72	98	04.10-	■
1.6 Flex		Gasolina	FWD	1598	74	101	04.10-	■
1.6 Flex		Gasolina	FWD	1598	79	107	04.10-	■
1.6 TDCi		Diesel	RWD	1560	66	90	10.10-	■
FOCUS (DNW) 08.98-03.05					Estate Van (Compact car-C Segment)			
1.4 (FXDA)		Gasolina	FWD	1388	55	75	04.99-03.05	■
1.4 (FXDB)		Gasolina	FWD	1388	55	75	04.99-03.05	■
1.4 (FXDC)		Gasolina	FWD	1388	55	75	04.99-03.05	■
1.4 (FXDD)		Gasolina	FWD	1388	55	75	04.99-03.05	■
1.6 (FYDA)		Gasolina	FWD	1596	74	101	04.99-03.05	■
1.6 (FYDB)		Gasolina	FWD	1596	74	101	04.99-03.05	■
1.6 (FYDC)		Gasolina	FWD	1596	74	101	04.99-03.05	■
1.6 (FYDD)		Gasolina	FWD	1596	74	101	04.99-03.05	■
1.8 (EYDB)		Gasolina	FWD	1796	85	116	04.99-03.05	■
1.8 (EYDC)		Gasolina	FWD	1796	85	116	04.99-03.05	■
1.8 (EYDD)		Gasolina	FWD	1796	85	116	04.99-03.05	■
1.8 (EYDE)		Gasolina	FWD	1796	85	116	04.99-03.05	■
1.8 (EYDF)		Gasolina	FWD	1796	85	116	04.99-03.05	■
1.8 (EYDG)		Gasolina	FWD	1796	85	116	04.99-03.05	■
1.8 TDDi (BHDA)		Diesel	FWD	1753	55	75	08.99-03.05	■
1.8 TDDi (BHDB)		Diesel	FWD	1753	55	75	08.99-03.05	■
1.8 TDDi (C9DA)		Diesel	FWD	1753	66	90	08.98-03.05	■
1.8 TDDi (C9DB)		Diesel	FWD	1753	66	90	08.98-03.05	■
1.8 TDDi (C9DC)		Diesel	FWD	1753	66	90	08.98-03.05	■
1.8 TDCi (FFDA)		Diesel	FWD	1753	74	101	08.02-03.05	■
1.8 TDCi (F9DA)		Diesel	FWD	1753	85	116	08.01-03.05	■
1.8 TDCi (F9DB)		Diesel	FWD	1753	85	116	08.01-03.05	■
FOCUS (DAW, DBW) 09.98-11.09					Hatchback (Compact car-C Segment)			
1.4 16V (FXDA)		Gasolina	RWD	1388	55	75	10.98-09.99	■
1.6		Gasolina	FWD	1598	76	103	07.03-06.07	■
1.8 16V (EYDB)		Gasolina	FWD	1796	85	115	10.98-11.04	■
1.8 16V (EYDC)		Gasolina	FWD	1796	85	115	10.98-11.04	■
1.8 16V (EYDD)		Gasolina	FWD	1796	85	115	10.98-11.04	■
1.8 16V (EYDE)		Gasolina	FWD	1796	85	115	10.98-11.04	■
1.8 16V (EYDF)		Gasolina	FWD	1796	85	115	10.98-11.04	■

LISTA DE APLICACIONES - BUYERS GUIDE

1.8 16V (EYDG)		Gasolina	FWD	1796	85	115	10.98-11.04	■
1.8 16V (EYDI)		Gasolina	FWD	1796	85	115	10.98-11.04	■
1.8 16V (EYDJ)		Gasolina	FWD	1796	85	115	10.98-11.04	■
1.8 16V (EYDL)		Gasolina	FWD	1796	85	115	10.98-11.04	■
2.0 16V (EDDB)		Gasolina	FWD	1988	96	131	10.98-11.04	■
2.0 16V (EDDC)		Gasolina	FWD	1988	96	131	10.98-11.04	■
2.0 16V (EDDD)		Gasolina	FWD	1988	96	131	10.98-11.04	■
2.0 16V (EDDF)		Gasolina	FWD	1988	96	131	10.98-11.04	■
1.8 16V BiFuel (EYDD)		Gasol./Gas (LPG)	FWD	1796	85	115	09.02-07.04	■
1.8 16V BiFuel (EYDG)		Gasol./Gas (LPG)	FWD	1796	85	115	09.02-07.04	■
1.8 16V BiFuel (EYDI)		Gasol./Gas (LPG)	FWD	1796	85	115	09.02-07.04	■
1.8 Turbo DI / TDDi (C9DA)	vehicles with ABS	Diesel	FWD	1753	66	90	10.98-11.04	■
1.8 Turbo DI / TDDi (C9DB)	vehicles with ABS	Diesel	FWD	1753	66	90	10.98-11.04	■
1.8 Turbo DI / TDDi (C9DC)	vehicles with ABS	Diesel	FWD	1753	66	90	10.98-11.04	■
1.8 TDCi (FFDA)		Diesel	FWD	1753	74	100	08.02-11.04	■
1.8 TDCi (F9DA)		Diesel	FWD	1753	85	115	03.01-11.04	■
1.8 TDCi (F9DB)		Diesel	FWD	1753	85	115	03.01-11.04	■
FOCUS (DFW) 02.99-11.09							Saloon (Compact car-C Segment)	
1.8 16V (EYDB)		Gasolina	FWD	1796	85	115	02.99-11.04	■
1.8 16V (EYDC)		Gasolina	FWD	1796	85	115	02.99-11.04	■
1.8 16V (EYDD)		Gasolina	FWD	1796	85	115	02.99-11.04	■
1.8 16V (EYDE)		Gasolina	FWD	1796	85	115	02.99-11.04	■
1.8 16V (EYDF)		Gasolina	FWD	1796	85	115	02.99-11.04	■
1.8 16V (EYDG)		Gasolina	FWD	1796	85	115	02.99-11.04	■
1.8 16V (EYDI)		Gasolina	FWD	1796	85	115	02.99-11.04	■
1.8 16V (EYDJ)		Gasolina	FWD	1796	85	115	02.99-11.04	■
1.8 16V (EYDL)		Gasolina	FWD	1796	85	115	02.99-11.04	■
2.0 16V (EDDB)		Gasolina	FWD	1988	96	131	02.99-11.04	■
2.0 16V (EDDC)		Gasolina	FWD	1988	96	131	02.99-11.04	■
2.0 16V (EDDD)		Gasolina	FWD	1988	96	131	02.99-11.04	■
2.0 16V (EDDF)		Gasolina	FWD	1988	96	131	02.99-11.04	■
1.8 Turbo DI / TDDi (BHDA)	vehicles with ABS	Diesel	FWD	1753	55	75	08.01-03.05	■
1.8 Turbo DI / TDDi (BHDB)	vehicles with ABS	Diesel	FWD	1753	55	75	08.01-03.05	■
1.8 Turbo DI / TDDi (C9DA)		Diesel	FWD	1753	66	90	02.99-11.04	■
1.8 Turbo DI / TDDi (C9DB)		Diesel	FWD	1753	66	90	02.99-11.04	■
1.8 Turbo DI / TDDi (C9DC)		Diesel	FWD	1753	66	90	02.99-11.04	■
1.8 TDCi (FFDA)		Diesel	FWD	1753	74	100	08.02-11.04	■
1.8 TDCi (F9DA)		Diesel	FWD	1753	85	115	03.01-11.04	■
1.8 TDCi (F9DB)		Diesel	FWD	1753	85	115	03.01-11.04	■
FOCUS Turnier (DNW) 02.99-12.07							Estate (Compact car-C Segment)	
1.8 16V (EYDB)		Gasolina	FWD	1796	85	115	02.99-11.04	■
1.8 16V (EYDC)		Gasolina	FWD	1796	85	115	02.99-11.04	■
1.8 16V (EYDD)		Gasolina	FWD	1796	85	115	02.99-11.04	■
1.8 16V (EYDE)		Gasolina	FWD	1796	85	115	02.99-11.04	■
1.8 16V (EYDF)		Gasolina	FWD	1796	85	115	02.99-11.04	■
1.8 16V (EYDG)		Gasolina	FWD	1796	85	115	02.99-11.04	■
1.8 16V (EYDI)		Gasolina	FWD	1796	85	115	02.99-11.04	■
1.8 16V (EYDJ)		Gasolina	FWD	1796	85	115	02.99-11.04	■
1.8 16V (EYDL)		Gasolina	FWD	1796	85	115	02.99-11.04	■

LISTA DE APLICACIONES - BUYERS GUIDE

2.0 16V (EDDB)		Gasolina	FWD	1988	96	131	02.99-11.04	■
2.0 16V (EDDC)		Gasolina	FWD	1988	96	131	02.99-11.04	■
2.0 16V (EDDD)		Gasolina	FWD	1988	96	131	02.99-11.04	■
2.0 16V (EDDF)		Gasolina	FWD	1988	96	131	02.99-11.04	■
1.8 Bifuel (EYDL)		Gasol./Gas (LPG)	FWD	1796	82	111	02.03-01.05	■
1.8 Turbo DI / TDDi (C9DA)		Diesel	FWD	1753	66	90	02.99-11.04	■
1.8 Turbo DI / TDDi (C9DB)		Diesel	FWD	1753	66	90	02.99-11.04	■
1.8 Turbo DI / TDDi (C9DC)		Diesel	FWD	1753	66	90	02.99-11.04	■
1.8 TDCi (FFDA)		Diesel	FWD	1753	74	100	08.02-11.04	■
1.8 TDCi (F9DA)		Diesel	FWD	1753	85	115	03.01-11.04	■
1.8 TDCi (F9DB)		Diesel	FWD	1753	85	115	03.01-11.04	■
FUSION 05.06-12.12					Saloon (Mini MPV-M1 Segment)			
2.3		Gasolina	FWD	2261	119	162	05.06-04.09	■
2.5		Gasolina	FWD	2488	127	173	05.09-12.12	■
2.5 Hybrid HEV		Gasol./eléc.	FWD	2488	142	193	11.10-12.12	■
SCORPIO II (GFR, GGR) 10.94-08.98					Saloon (Executive car-E Segment)			
2.0 i (NSD)		Gasolina	RWD	1998	85	115	10.94-08.98	■
2.0 i 16V (N3A)		Gasolina	RWD	1998	100	136	10.94-08.98	■
2.3 i 16V (Y5A)		Gasolina	RWD	2295	108	147	06.96-08.98	■
2.9 i (BRG)		Gasolina	RWD	2933	110	150	02.95-08.98	■
2.5 TD (VM)		Diesel	RWD	2499	92	125	09.96-08.98	■
2.5 TD (SCC)		Diesel	RWD	2500	85	115	10.94-08.98	■
SIERRA (GBC) 08.82-02.87					Hatchback (Large family car-D Segment)			
1.3 (JCT)		Gasolina	RWD	1294	44	60	08.82-12.86	■
1.6 (LCS)		Gasolina	RWD	1593	55	75	08.82-12.86	■
1.6 (LCT)		Gasolina	RWD	1593	55	75	08.82-12.86	■
1.6 (LSD)		Gasolina	RWD	1593	55	75	08.82-12.86	■
1.6 (LSD)		Gasolina	RWD	1597	58	79	08.84-12.86	■
2.0 4x4 (N5B)		Gasolina	4WD	1994	150	204	10.85-02.87	■
2.0 4x4 (YBB)		Gasolina	4WD	1994	150	204	10.85-02.87	■
2.8 XR4i (PR6)		Gasolina	RWD	2792	105	143	08.82-12.86	■
2.8 XR4i (PR5)		Gasolina	RWD	2792	107	146	08.82-12.86	■
2.8 XR4i (PRT)		Gasolina	RWD	2792	110	150	08.82-12.86	■
2.8 XR 4x4 (PRT)		Gasolina	4WD	2792	110	150	02.85-12.86	■
SIERRA II 02.84-10.95					Hatchback (Large family car-D Segment)			
1.6		Gasolina	RWD	1597	55	75	01.87-02.93	■
1.6 i (L6B)	vehicles with ABS	Gasolina	RWD	1598	59	80	10.89-02.93	■
1.8 (R2C)		Gasolina	RWD	1769	64	87	05.88-02.93	■
1.8 (R6A)		Gasolina	RWD	1769	64	87	05.88-02.93	■
1.8 (RED)		Gasolina	RWD	1796	59	80	10.87-05.88	■
1.8 (REF)		Gasolina	RWD	1796	59	80	10.87-05.88	■
2.0 i (NE5)		Gasolina	RWD	1993	74	100	01.87-02.93	■
2.0 i (NEJ)		Gasolina	RWD	1993	74	100	01.87-02.93	■
2.0 i Cat (N4B)		Gasolina	RWD	1993	74	100	01.87-02.93	■
2.0 (N8C)		Gasolina	RWD	1993	77	105	01.87-02.93	■
2.0 (NES)		Gasolina	RWD	1993	77	105	01.87-02.93	■
2.0 i (N4A)		Gasolina	RWD	1993	85	115	01.87-02.93	■
2.0 i (N4I)		Gasolina	RWD	1993	85	115	01.87-02.93	■
2.0 RS Cosworth (N5B)		Gasolina	RWD	1993	150	204	11.87-01.90	■

LISTA DE APLICACIONES - BUYERS GUIDE

2.0 RS Cosworth (YBB)	Gasolina	RWD	1993	150	204	11.87-01.90	■
2.0 i (N8A)	Gasolina	RWD	1998	80	109	06.89-02.93	■
2.0 i DOHC (N9E)	Gasolina	RWD	1998	85	115	12.91-02.93	■
2.0 4x4 (N9C)	Gasolina	4WD	1998	88	120	10.91-03.93	■
2.0 i (N9C)	Gasolina	RWD	1998	88	120	06.89-02.93	■
2.0 i (N9B)	Gasolina	RWD	1998	92	125	06.89-02.93	■
2.8 i (PR8)	Gasolina	RWD	2792	105	143	01.87-02.93	■
2.8 (PRG)	Gasolina	RWD	2792	110	150	03.87-09.89	■
2.9 i (B4B)	Gasolina	RWD	2936	107	145	08.88-02.93	■
2.9 i (B4C)	Gasolina	RWD	2936	107	145	08.88-02.93	■
1.8 TD (RFA)	Diesel	RWD	1753	55	75	08.88-02.93	■
1.8 TD (RFB)	Diesel	RWD	1753	55	75	08.88-02.93	■
1.8 TD (RFL)	Diesel	RWD	1753	55	75	08.88-02.93	■
SIERRA II (GBG, GB4) 01.87-02.93				Saloon (Large family car-D Segment)			
1.6 (LSF)	Gasolina	RWD	1597	53	72	01.88-02.93	■
1.6 (LSE)	Gasolina	RWD	1597	55	75	01.87-02.93	■
1.6 i (L6B)	Gasolina	RWD	1597	59	80	10.89-02.93	■
1.8 (R2C)	Gasolina	RWD	1769	64	87	05.88-02.93	■
1.8 (R6A)	Gasolina	RWD	1769	64	87	05.88-02.93	■
1.8 (RED)	Gasolina	RWD	1796	59	80	10.87-09.89	■
1.8 (REF)	Gasolina	RWD	1796	59	80	10.87-09.89	■
1.8 (R2A)	Gasolina	RWD	1796	66	90	01.87-05.88	■
1.8 (RED)	Gasolina	RWD	1796	66	90	01.87-05.88	■
2.0 i (NE5)	Gasolina	RWD	1993	74	100	01.87-12.89	■
2.0 i (NEJ)	Gasolina	RWD	1993	74	100	01.87-12.89	■
2.0 i Cat (N4B)	Gasolina	RWD	1993	74	100	01.87-02.93	■
2.0 (N8C)	Gasolina	RWD	1993	77	105	01.87-02.93	■
2.0 (NES)	Gasolina	RWD	1993	77	105	01.87-02.93	■
2.0 i (N4A)	Gasolina	RWD	1993	85	115	01.87-02.93	■
2.0 i (N4I)	Gasolina	RWD	1993	85	115	01.87-02.93	■
2.0 RS Cosworth (N5B)	Gasolina	RWD	1993	150	204	01.87-12.90	■
2.0 RS Cosworth (YBB)	Gasolina	RWD	1993	150	204	01.87-12.90	■
2.0 16V Cosworth 4x4	Gasolina	4WD	1993	158	215	01.90-02.93	■
2.0 16V Cosworth 4x4 (N5C)	Gasolina	4WD	1993	162	220	01.90-02.93	■
2.0 (N8A)	Gasolina	RWD	1998	80	109	07.89-12.92	■
2.0 i DOHC (N9E)	Gasolina	RWD	1998	85	115	12.91-02.93	■
2.0 4x4 (N9C)	Gasolina	4WD	1998	88	120	01.90-02.93	■
2.0 i (N9C)	Gasolina	RWD	1998	88	120	01.90-02.93	■
2.0 i (N9A)	Gasolina	RWD	1998	90	122	01.90-02.93	■
2.0 4x4 (N9C)	Gasolina	4WD	1998	92	125	01.90-02.93	■
2.0 i (N9C)	Gasolina	RWD	1998	92	125	01.90-02.93	■
2.8 i (PR8)	Gasolina	RWD	2792	105	143	08.87-02.93	■
2.9 i (B4B)	Gasolina	RWD	2935	107	145	08.88-02.93	■
2.9 i (B4C)	Gasolina	RWD	2935	107	145	08.88-02.93	■
2.9 i (B4B)	Gasolina	RWD	2935	110	150	08.88-02.93	■
2.9 i (B4C)	Gasolina	RWD	2935	110	150	08.88-02.93	■
1.8 TD (RFA)	Diesel	RWD	1753	55	75	08.88-02.93	■
1.8 TD (RFB)	Diesel	RWD	1753	55	75	08.88-02.93	■
1.8 TD (RFL)	Diesel	RWD	1753	55	75	08.88-02.93	■

LISTA DE APLICACIONES - BUYERS GUIDE

SIERRA II Turnier (BNG) 01.87-02.93					Estate (Large family car-D Segment)			
1.6 (LSF)		Gasolina	RWD	1597	53	72	01.88-02.93	■
1.6 (LSE)		Gasolina	RWD	1597	55	75	01.87-02.93	■
1.6 i (L6B)		Gasolina	RWD	1598	59	80	10.89-02.93	■
1.8 (R2C)		Gasolina	RWD	1769	64	87	05.88-02.93	■
1.8 (R6A)		Gasolina	RWD	1769	64	87	05.88-02.93	■
1.8 (RED)		Gasolina	RWD	1796	59	80	10.87-05.88	■
1.8 (REF)		Gasolina	RWD	1796	59	80	10.87-05.88	■
1.8 (R2A)		Gasolina	RWD	1796	66	90	01.87-05.88	■
1.8 (RED)		Gasolina	RWD	1796	66	90	01.87-05.88	■
2.0 i (NE5)		Gasolina	RWD	1993	74	100	01.87-02.93	■
2.0 i (NEJ)		Gasolina	RWD	1993	74	100	01.87-02.93	■
2.0 i Cat (N4B)		Gasolina	RWD	1993	74	100	01.87-02.93	■
2.0 (N8C)		Gasolina	RWD	1993	77	105	01.87-02.93	■
2.0 (NES)		Gasolina	RWD	1993	77	105	01.87-02.93	■
2.0 i (N4A)		Gasolina	RWD	1993	85	115	01.87-02.93	■
2.0 i (N4I)		Gasolina	RWD	1993	85	115	01.87-02.93	■
1.9 (N8A)		Gasolina	RWD	1998	80	108	10.88-09.91	■
2.0 i DOHC (N9E)		Gasolina	RWD	1998	85	115	12.91-02.93	■
2.0 4x4 (N9C)		Gasolina	4WD	1998	88	120	02.90-02.93	■
2.0 i (N9C)		Gasolina	RWD	1998	88	120	05.89-02.93	■
2.0 4x4 (N9C)		Gasolina	4WD	1998	92	125	05.89-02.93	■
2.0 i (N9C)		Gasolina	RWD	1998	92	125	05.89-02.93	■
2.8 i (PR8)		Gasolina	RWD	2792	105	143	01.87-02.93	■
2.8 i (PR7)		Gasolina	RWD	2792	107	146	01.87-02.93	■
2.8 i 4x4 (PR7)		Gasolina	4WD	2792	107	146	01.87-02.93	■
2.8 4x4 (PRG)		Gasolina	4WD	2792	110	150	01.87-08.88	■
2.9 4x4 (B4B)		Gasolina	4WD	2935	110	150	08.88-02.93	■
2.9 4x4 (B4C)		Gasolina	4WD	2935	110	150	08.88-02.93	■
2.9 i (B4B)		Gasolina	RWD	2935	110	150	08.88-02.93	■
2.9 i (B4C)		Gasolina	RWD	2935	110	150	08.88-02.93	■
2.9 (B4B)		Gasolina	RWD	2936	107	145	08.88-02.93	■
2.9 (B4C)		Gasolina	RWD	2936	107	145	08.88-02.93	■
2.9 4x4 (B4B)		Gasolina	4WD	2936	107	145	08.88-02.93	■
2.9 4x4 (B4C)		Gasolina	4WD	2936	107	145	08.88-02.93	■
1.8 TD (RFA)		Diesel	RWD	1753	55	75	08.88-02.93	■
1.8 TD (RFB)		Diesel	RWD	1753	55	75	08.88-02.93	■
1.8 TD (RFL)		Diesel	RWD	1753	55	75	08.88-02.93	■
SIERRA Turnier (BNC) 08.82-12.86					Estate (Large family car-D Segment)			
1.6 (LCS)		Gasolina	RWD	1593	55	75	08.82-12.86	■
1.6 (LCT)		Gasolina	RWD	1593	55	75	08.82-12.86	■
1.6 (LSD)		Gasolina	RWD	1593	55	75	08.82-12.86	■
2.8 i 4x4 (PR6)		Gasolina	4WD	2792	105	143	08.82-12.86	■
2.8 XR4i (PR6)		Gasolina	RWD	2792	105	143	08.82-12.86	■
2.8 i 4x4 (PR6)		Gasolina	4WD	2792	107	146	08.82-12.86	■
2.8 XR4i (PR5)	04/84-	Gasolina	RWD	2792	107	146	08.82-12.86	■
FORD USA								
FOCUS 09.99-12.07					Estate (Compact car-C Segment)			
2.0		Gasolina	FWD	1988	97	132	09.99-12.04	■

LISTA DE APLICACIONES - BUYERS GUIDE

FOCUS 09.99-12.07					Hatchback (Compact car-C Segment)			
2.0	Gasolina	FWD	1988	101	138	09.04-12.07	■	
2.3	Gasolina	FWD	2294	113	154	09.02-12.04	■	
FOCUS 09.99-12.07					Saloon (Compact car-C Segment)			
2.0	Gasolina	FWD	1988	97	132	09.99-12.04	■	
TVR								
CHIMAERA 11.92-10.03					Convertible (Sports car-S Segment)			
3.9 (39SE)	Gasolina	RWD	3947	177	241	01.93-10.03	■	