

# LISTA DE APLICACIONES - BUYERS GUIDE

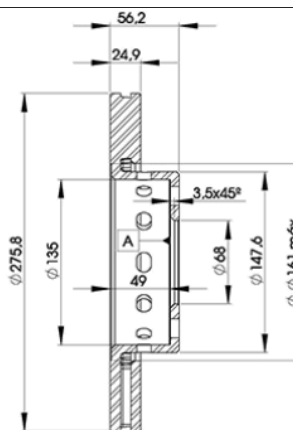
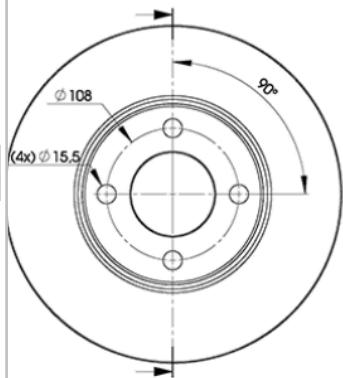
## 78BD8012-2



8 424073 148711

Weight: 14.870

O.E.M.	MAKE
895 615 301 B	AUDI



## 78BD8012-2



Ø275.8x24.9x56.2

MAKE
AUDI



Trac.	CC	Kw	CV	
				Front / Rear

### AUDI

#### 80 V B4 / 90 (8C2) 09.91-07.95

					Saloon (Compact executive car-D Segment)				
2.6 quattro (ABC)		Gasolina	4WD	2598	110	150	06.92-12.94		■
2.8 (AAH)		Gasolina	FWD	2771	128	174	09.91-12.94		■
2.8 (AFC)		Gasolina	FWD	2771	128	174	09.91-12.94		■
2.8 quattro (AAH)		Gasolina	4WD	2771	128	174	09.91-12.94		■
2.8 quattro (AFC)		Gasolina	4WD	2771	128	174	09.91-12.94		■

#### 80 V B4 Avant / 90 (8C5) 09.91-01.96

					Estate (Compact executive car-D Segment)				
2.6 quattro (ABC)		Gasolina	4WD	2598	110	150	07.92-07.95		■
2.8 (AAH)	-12/95	Gasolina	FWD	2771	128	174	09.91-01.96		■
2.8 quattro (AAH)		Gasolina	4WD	2771	128	174	08.92-07.95		■

#### CABRIOLET B3 (8G7) 05.91-08.00

					Convertible (Compact executive car-D Segment)				
2.8 (AAH)		Gasolina	FWD	2771	128	174	11.92-08.00		■
2.8 (AFC)		Gasolina	FWD	2771	128	174	11.92-08.00		■

#### COUPE II B3 (89, 8B3) 10.88-12.96

					Coupe (Compact executive car-D Segment)				
2.3 20V (7A)		Gasolina	FWD	2309	123	167	08.90-07.91		■
2.3 20V quattro (7A)		Gasolina	4WD	2309	123	167	05.90-12.96		■
2.3 20V (7A)	08/90-	Gasolina	FWD	2309	125	170	08.89-07.91		■
2.3 20V quattro (7A)		Gasolina	4WD	2309	125	170	11.88-07.91		■
2.6 (ABC)		Gasolina	FWD	2598	110	150	08.92-12.96		■
2.6 quattro (ABC)		Gasolina	4WD	2598	110	150	08.92-12.96		■
2.8 (AAH)		Gasolina	FWD	2771	128	174	09.91-12.96		■
2.8 quattro (AAH)		Gasolina	4WD	2771	128	174	08.91-12.96		■

