

LISTA DE APLICACIONES - BUYERS GUIDE

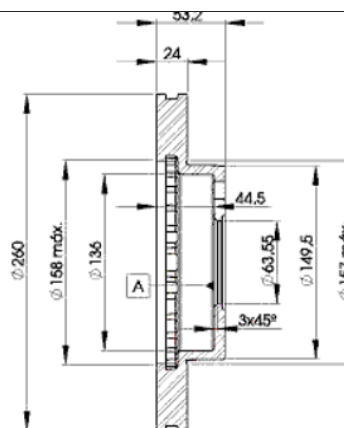
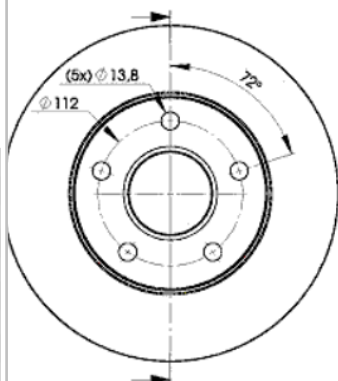
78BD8109-2



8 424073 148803

Weight: 11.170

O.E.M.	MAKE
1 630 011	FORD
5 022 664	FORD
5 023 441	FORD
5 027 462	FORD
5 027 463	FORD
6 158 214	TVR
6 168 109	FORD
6 193 694	FORD



78BD8109-2



Ø260x24x53.1

MAKE

FORD

TVR



Trac.	CC	Kw	CV
-------	----	----	----



Front / Rear

FORD

SCORPIO / GRANADA (GAE, GGE) 04.85-09.94

Hatchback (Executive car-E Segment)

Model	Engine	Drivetrain	CC	Kw	CV	Year Range	Segment
1.8 (REC)	Gasolina	RWD	1796	66	90	04.85-02.92	■
2.0 i (NRC)	Gasolina	RWD	1993	74	100	10.85-12.90	■
2.0 (N8D)	Gasolina	RWD	1993	77	105	04.85-08.89	■
2.0 (NEL)	Gasolina	RWD	1993	77	105	04.85-08.89	■
2.0 i (NRA)	Gasolina	RWD	1993	85	115	04.85-02.92	■
2.0 i (NRI)	Gasolina	RWD	1993	85	115	04.85-02.92	■
2.0 (N8B)	Gasolina	RWD	1998	80	109	11.88-10.92	■
2.0 i (NRA)	Gasolina	RWD	1998	85	115	02.92-09.94	■
2.0 i (NRI)	Gasolina	RWD	1998	85	115	02.92-09.94	■
2.0 i (N9D)	Gasolina	RWD	1998	88	120	05.89-09.94	■
2.4 i (ARD)	Gasolina	RWD	2394	92	125	10.88-02.92	■
2.4 i Cat (ARD)	Gasolina	RWD	2394	92	125	10.88-09.94	■
2.4 i (ARC)	Gasolina	RWD	2394	96	130	09.86-09.88	■
2.8 i (PRE)	Gasolina	RWD	2792	110	150	04.85-11.86	■
2.8 i 4x4 (PRE)	Gasolina	4WD	2792	110	150	10.85-11.86	■
2.9 i (BRD)	Gasolina	RWD	2933	107	145	09.86-09.94	■
2.9 i (BRE)	Gasolina	RWD	2933	107	145	09.86-09.94	■
2.9 i (BRF)	Gasolina	RWD	2933	107	145	09.86-09.94	■
2.9 i 4x4 (BRD)	Gasolina	4WD	2933	107	145	05.88-02.93	■
2.9 i 4x4 (BRE)	Gasolina	4WD	2933	107	145	05.88-02.93	■
2.9 i 4x4 (BRF)	Gasolina	4WD	2933	107	145	05.88-02.93	■
2.9 i Cat (BRE)	Gasolina	RWD	2933	107	145	10.87-09.94	■
2.9 i (BRC)	Gasolina	RWD	2933	110	150	09.86-09.94	■

LISTA DE APLICACIONES - BUYERS GUIDE

2.9 i 4x4 (BRC)		Gasolina	4WD	2933	110	150	09.86-09.94	■
2.9 i 24V (BOA)		Gasolina	RWD	2933	143	195	04.91-09.94	■
2.5 D (STR)		Diesel	RWD	2498	51	69	12.85-02.92	■
2.5 TD (SFA)		Diesel	RWD	2498	68	92	06.88-07.93	■
2.5 TD (SFB)		Diesel	RWD	2498	68	92	06.88-07.93	■
2.5 TD (SCB)		Diesel	RWD	2500	85	115	08.93-09.94	■
SCORPIO / GRANADA (GGE) 01.86-12.94					Saloon (Executive car-E Segment)			
1.8 (REC)		Gasolina	RWD	1796	66	89	01.86-10.88	■
2.0 (NRA)		Gasolina	RWD	1993	85	115	11.92-09.93	■
2.0 (N8B)		Gasolina	RWD	1998	77	105	03.90-08.92	■
2.0 (N8B)		Gasolina	RWD	1998	80	109	06.89-03.93	■
2.0 i (N9F)		Gasolina	RWD	1998	85	115	02.92-09.94	■
2.0 i (N9D)		Gasolina	RWD	1998	88	120	05.89-09.94	■
2.0 i (N9B)		Gasolina	RWD	1998	92	125	05.89-02.92	■
2.4 i (ARD)		Gasolina	RWD	2394	92	125	10.88-10.94	■
2.9		Gasolina	RWD	2914	107	145	09.92-09.94	■
2.9 i (BRD)		Gasolina	RWD	2933	107	145	09.86-12.94	■
2.9 i (BRE)		Gasolina	RWD	2933	107	145	09.86-12.94	■
2.9 i (BRF)		Gasolina	RWD	2933	107	145	09.86-12.94	■
2.9 i 4x4 (BRD)		Gasolina	4WD	2933	107	145	12.89-10.94	■
2.9 i 4x4 (BRE)		Gasolina	4WD	2933	107	145	12.89-10.94	■
2.9 i 4x4 (BRF)		Gasolina	4WD	2933	107	145	12.89-10.94	■
2.9 i 24V (BOA)		Gasolina	RWD	2933	143	195	04.91-09.94	■
2.5 D (STR)		Diesel	RWD	2498	51	69	12.89-12.94	■
2.5 TD (SFA)		Diesel	RWD	2498	68	92	06.88-07.93	■
2.5 TD (SFB)		Diesel	RWD	2498	68	92	06.88-07.93	■
2.5 TD (SCB)		Diesel	RWD	2500	85	115	08.93-09.94	■
SCORPIO / GRANADA Turnier (GGE) 05.88-09.94					Estate (Executive car-E Segment)			
2.0 i (N9F)		Gasolina	RWD	1998	85	115	09.91-09.94	■
2.0 i (N9D)		Gasolina	RWD	1998	88	120	09.91-09.94	■
2.0 i (N9A)		Gasolina	RWD	1998	90	122	10.90-10.92	■
2.4 i (ARD)		Gasolina	RWD	2394	92	125	09.91-09.94	■
2.9 i (BRD)		Gasolina	RWD	2933	107	145	09.91-09.94	■
2.9 i (BRE)		Gasolina	RWD	2933	107	145	09.91-09.94	■
2.9 i (BRF)		Gasolina	RWD	2933	107	145	09.91-09.94	■
2.9 i 4x4 (BRD)		Gasolina	4WD	2933	107	145	05.88-02.93	■
2.9 i 4x4 (BRE)		Gasolina	4WD	2933	107	145	05.88-02.93	■
2.9 i 4x4 (BRF)		Gasolina	4WD	2933	107	145	05.88-02.93	■
2.9 24V (BOA)		Gasolina	RWD	2935	143	195	08.93-09.94	■
2.5 TD (SFA)		Diesel	RWD	2498	68	92	09.91-07.93	■
2.5 TD (SFB)		Diesel	RWD	2498	68	92	09.91-07.93	■
2.5 D (STR)		Diesel	RWD	2499	51	69	10.90-08.92	■
2.5 TD (SCB)		Diesel	RWD	2500	85	115	08.93-09.94	■
SIERRA (GBC) 08.82-02.87					Hatchback (Large family car-D Segment)			
2.8 i XR 4x4 (PR5)		Gasolina	4WD	2792	107	146	09.83-12.86	■
2.8 i XR 4x4 (PR6)		Gasolina	4WD	2792	107	146	09.83-12.86	■
2.8 XR 4x4 (PRT)		Gasolina	4WD	2792	110	150	02.85-12.86	■
SIERRA II (GBC, GBG) 01.87-03.93					Hatchback (Large family car-D Segment)			
2.8 i XR 4x4 (PR7)		Gasolina	4WD	2792	107	146	01.87-02.93	■

LISTA DE APLICACIONES - BUYERS GUIDE

2.8 i XR 4x4 (PRG)	Gasolina	4WD	2792	110	150	01.87-08.88	■
2.9 i XR 4x4 (B4B)	Gasolina	4WD	2936	107	145	08.88-02.93	■
2.9 i XR 4x4 (B4C)	Gasolina	4WD	2936	107	145	08.88-02.93	■
2.9 i XR 4x4 (B4A)	Gasolina	4WD	2936	110	150	08.88-02.93	■
SIERRA II (GBG, GB4) 01.87-02.93					Saloon (Large family car-D Segment)		
2.9 4x4 (B4B)	Gasolina	4WD	2935	107	145	08.88-02.93	■
2.9 4x4 (B4C)	Gasolina	4WD	2935	107	145	08.88-02.93	■
2.9 4x4 (B4B)	Gasolina	4WD	2935	110	150	08.88-02.93	■
2.9 4x4 (B4C)	Gasolina	4WD	2935	110	150	08.88-02.93	■
SIERRA Turnier (BNC) 08.82-12.86					Estate (Large family car-D Segment)		
2.8 i 4x4 (PR6)	Gasolina	4WD	2792	105	143	08.82-12.86	■
2.8 i 4x4 (PR6)	Gasolina	4WD	2792	107	146	08.82-12.86	■
TVR							
350 01.83-12.89					Convertible (Sports car-S Segment)		
3.5 i (37A)	Gasolina	RWD	3528	145	197	01.83-12.89	■