

LISTA DE APLICACIONES - BUYERS GUIDE

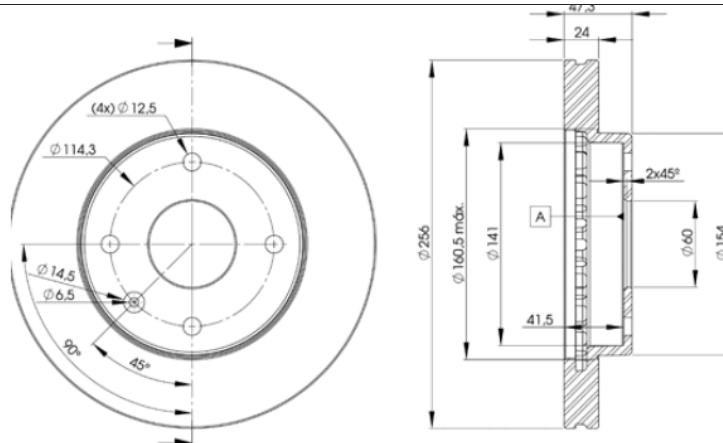
78BD8338-2



8 424073 148834

Weight: 10.512

O.E.M.	MAKE
9626 4591	DAEWOO
96328338	DAEWOO
96549782	DAEWOO



78BD8338-2

E1 90R-02C0452/0077



Ø256x24x47.3

MAKE
CHEVROLET
DAEWOO
MERCEDES-BENZ



Trac.	CC	Kw	CV
-------	----	----	----



Front / Rear

CHEVROLET

EPICA (KL1_) 06.04-						Saloon (Executive car-E Segment)		
2.0 (LBM)		Gasolina	FWD	1993	105	144	06.06-12.11	■
2.0 (LF3(121CUL6))		Gasolina	FWD	1993	105	144	06.06-12.11	■
2.0 (L88)		Gasolina	FWD	1998	94	128	01.05-12.06	■
2.0		Gasolina	FWD	1998	96	131	08.06-12.11	■
2.0 (L88)		Gasolina	FWD	1998	98	133	01.05-12.06	■
2.5 (LBK)		Gasolina	FWD	2492	115	156	06.06-12.11	■
2.5 (LF4(152CUL6))		Gasolina	FWD	2492	115	156	06.06-12.11	■
2.0 D (LLW)		Diesel	FWD	1991	110	150	01.07-12.11	■
EVANDA 03.05-						Saloon (Executive car-E Segment)		
2.0 (L88)		Gasolina	FWD	1998	96	131	03.05-12.06	■
LACETTI (J200) 03.03-						Hatchback (Compact car-C Segment)		
1.4 16V (L14(85CUL4))		Gasolina	FWD	1399	70	95	03.05-03.13	■
1.6 (L44(96CUL4))		Gasolina	FWD	1598	80	109	03.05-	■
1.6 (LXT)		Gasolina	FWD	1598	80	109	03.05-	■
1.8 (LDA)		Gasolina	FWD	1796	89	121	08.05-12.11	■
1.8 (LDA)		Gasolina	FWD	1796	90	122	03.05-	■
2.0 D (LMN)		Diesel	FWD	1991	89	121	01.07-	■
NUBIRA / ESTATE 01.05-						Estate (Compact car-C Segment)		
1.6 (L44(96CUL4))	vehicles with ABS	Gasolina	FWD	1598	80	109	03.05-12.11	■
1.6 (LXT)	vehicles with ABS	Gasolina	FWD	1598	80	109	03.05-12.11	■
1.8 (LDA)	vehicles with ABS	Gasolina	FWD	1796	90	122	03.05-12.09	■
2.0 D (LMN)		Diesel	FWD	1991	89	121	01.07-12.11	■

LISTA DE APLICACIONES - BUYERS GUIDE

NUBIRA / OPTRA 01.05-					Saloon (Compact car-C Segment)			
1.4 (L14(85CUL4))		Gasolina	FWD	1399	70	95	01.06-12.08	■
1.6 (L44(96CUL4))	vehicles with ABS	Gasolina	FWD	1598	80	109	03.05-12.11	■
1.6 (LXT)	vehicles with ABS	Gasolina	FWD	1598	80	109	03.05-12.11	■
1.8 (LDA)		Gasolina	FWD	1796	89	121	01.06-09.07	■
1.8 (LDA)	vehicles with ABS	Gasolina	FWD	1796	90	122	03.05-12.09	■
2.0 D (LMN)		Diesel	FWD	1991	89	121	01.05-12.11	■
REZZO / TACUMA (U100) 03.05-					MPV (Compact MPV-M1 Segment)			
1.6 (L44(96CUL4))		Gasolina	FWD	1598	66	90	03.05-03.09	■
1.6 (L44(96CUL4))		Gasolina	FWD	1598	77	105	03.05-	■
1.6 (L44(96CUL4))		Gasolina	FWD	1598	79	107	08.05-	■
2.0 (L88)		Gasolina	FWD	1998	89	121	03.05-	■
2.0 (L88)		Gasolina	FWD	1998	90	122	08.05-09.09	■
VIVANT 05.00-					MPV (Compact MPV-M1 Segment)			
1.6		Gasolina	FWD	1598	78	106	08.01-	■
2.0		Gasolina	FWD	1995	97	132	08.02-	■
2.0		Gasolina	FWD	1998	89	121	08.00-12.04	■
VIVANT II 01.05-					MPV (Compact MPV-M1 Segment)			
1.6		Gasolina	FWD	1598	77	105	01.05-03.09	■
2.0 CX		Gasolina	FWD	1998	89	121	01.05-03.09	■
DAEWOO								
EVANDA (KLAL) 08.02-					Saloon (Executive car-E Segment)			
2.0 (X 20 SED)		Gasolina	FWD	1998	96	131	08.02-	■
LACETTI (KLAN) 02.02-					Hatchback (Compact car-C Segment)			
1.4 (F14D3)		Gasolina	FWD	1399	69	94	06.02-12.04	■
1.4 (F14D3)	vehicles with ABS	Gasolina	FWD	1399	70	95	02.04-	■
1.6 (F16D3)	vehicles with ABS	Gasolina	FWD	1598	80	109	02.04-	■
1.8 (T18SED)	vehicles with ABS	Gasolina	FWD	1799	90	122	02.04-	■
LACETTI 06.99-07.03					Saloon (Compact car-C Segment)			
1.5 (A15SMS)		Gasolina	FWD	1498	63	86	08.03-12.04	■
1.6 (A16DMS)		Gasolina	FWD	1598	78	106	06.99-07.03	■
1.8 (T18SED)		Gasolina	FWD	1799	89	121	06.02-12.04	■
2.0 (C20SED)		Gasolina	FWD	1998	81	110	06.99-07.03	■
MAGNUS 07.99-					Saloon (Executive car-E Segment)			
2.0 (X 20 SED)		Gasolina	FWD	1998	96	131	07.99-01.06	■
2.5 (X 25 D1)		Gasolina	FWD	2492	115	156	08.03-12.04	■
NUBIRA II (J200) 07.03-					Saloon (Compact car-C Segment)			
1.4 (F14D3)		Gasolina	FWD	1399	69	94	10.03-12.04	■
1.6 (F16D3)	vehicles with ABS	Gasolina	FWD	1598	80	109	07.03-	■
1.8 (T18SED)		Gasolina	FWD	1799	90	122	07.03-	■
NUBIRA II Wagon (J200) 07.03-					Estate (Compact car-C Segment)			
1.6 (F16D3)	vehicles with ABS	Gasolina	FWD	1598	80	109	07.03-	■
1.8		Gasolina	FWD	1796	70	95	06.04-	■
1.8 (T18SED)		Gasolina	FWD	1799	90	122	07.03-	■
REZZO / TACUMA (U100) 06.00-					MPV (Compact MPV-M1 Segment)			
1.6 SX (L44(96CUL4))		Gasolina	FWD	1598	66	90	08.01-12.04	■
1.6 (A16DMS)	08/01-	Gasolina	FWD	1598	77	105	09.00-	■

LISTA DE APLICACIONES - BUYERS GUIDE

1.6 (A16DMS)	Gasolina	FWD	1598	78	106	02.02-12.04	■
1.8 (F18D2)	Gasolina	FWD	1761	67	91	09.00-	■
1.8 (F18S2)	Gasolina	FWD	1761	72	98	09.00-	■
1.8 (F18S2)	Gasolina	FWD	1761	74	101	09.00-	■
2.0 (X 20 SED)	Gasolina	FWD	1998	89	121	09.01-12.04	■
2.0 (T20SED)	Gasolina	FWD	1998	94	128	09.00-	■
TOSCA 02.06-				Saloon (Executive car-E Segment)			
1.8 (T18SED)	Gasolina	FWD	1799	90	122	02.06-	■
2.0 XT (X 20 D1)	Gasolina	FWD	1993	105	143	02.06-	■
2.5 Executive (X 25 D1)	Gasolina	FWD	2492	115	156	02.06-	■
2.0 TDCi	Diesel	FWD	1991	110	150	02.06-	■
MERCEDES-BENZ							
CLC-Class (CL203) 05.08-06.11				Coupe (Compact executive car-D Segment)			
CLC 200 Kompressor (203.741) (M 271.957)	Gasolina	RWD	1796	135	184	05.08-06.11	■