

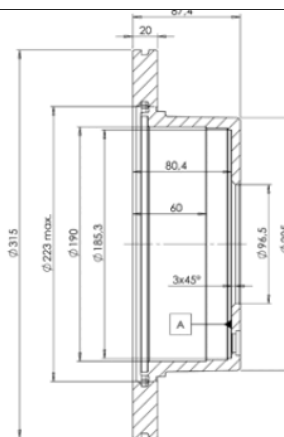
## LISTA DE APLICACIONES - BUYERS GUIDE

**78BD8411-2**



Weight: 16.992

O.E.M.	MAKE
58411 3E300	KIA



**78BD8411-2**



Ø315x20x87.5

**MAKE**

KIA



Trac.	CC	Kw	CV
-------	----	----	----



Front / Rear

**KIA**

SORENTO (U.S.A.) 09.02-12.09					Closed Off-Road Vehicle (Compact SUV-J Segment)			
3.3	Gasolina	FWD			180	145	09.08-12.09	■
SORENTO (JC) 08.02-12.11					SUV Van (Compact SUV-J Segment)			
2.5 CRDi 4WD	Diesel	4WD	2497		103	140	08.05-10.06	■
SORENTO (JC) 08.02-					SUV (Compact SUV-J Segment)			
2.4 (G4JS)	Gasolina	4WD	2351		102	139	08.02-06.09	■
3.3 V6	Gasolina	4WD	3297		177	241	12.06-	■
3.3 4WD (G6DB)	Gasolina	4WD	3342		180	245	09.08-12.09	■
3.3 V6 4WD (G6DB)	Gasolina	4WD	3342		182	248	02.07-12.11	■
3.5	Gasolina	RWD	3497		143	194	09.02-12.06	■
3.5 V6 4WD (G6CU)	Gasolina	4WD	3497		143	194	08.02-12.11	■