

LISTA DE APLICACIONES - BUYERS GUIDE

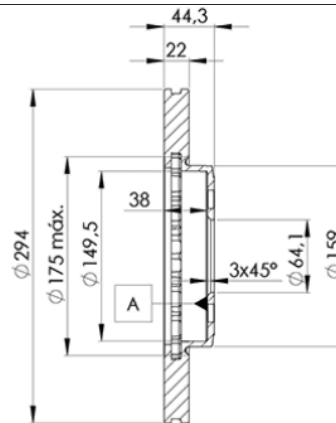
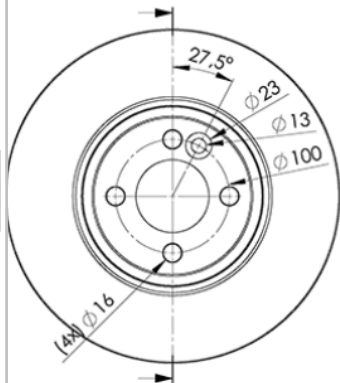
78BD8570-2



8 424073 148865

Weight: 12.900

O.E.M.	MAKE
34 11 6 774 986	MINI
34 11 6 858 652	MINI



78BD8570-2



90R-02C0452/0080



Ø294x22x44.3

MAKE

MINI



Trac.	CC	Kw	CV
-------	----	----	----



Front / Rear

MINI

MINI (R52) 04.04-07.08

Convertible (Supermini car-B Segment)

Cooper (N16 B16 A)		Gasolina	FWD	1598	85	115	11.11-04.15	■
Cooper (N16 B16 A)	not sports package	Gasolina	FWD	1598	90	122	11.11-04.15	■
Cooper S (N14 B16 A)		Gasolina	FWD	1598	120	163	10.07-06.15	■
Cooper S (N18 B16 A)		Gasolina	FWD	1598	120	163	10.07-06.15	■
Cooper S (N18 B16 A)		Gasolina	FWD	1598	120	163	11.11-04.15	■
Cooper S (W11 B16 A)	11/06-	Gasolina	FWD	1598	125	170	07.04-07.08	■
Cooper S (N14 B16 A)		Gasolina	FWD	1598	128	174	12.08-07.10	■
Cooper S (N14 B16 AB)		Gasolina	FWD	1598	128	174	12.08-07.10	■
Cooper S (N18 B16 A)	-06/14	Gasolina	FWD	1598	135	184	02.10-06.15	■
Cooper S (N18 B16 A)	not sports package	Gasolina	FWD	1598	135	184	11.11-04.15	■
Cooper S (N14 B16 A)		Gasolina	FWD	1598	141	192	04.08-07.10	■
Cooper S (N14 B16 AB)		Gasolina	FWD	1598	141	192	04.08-07.10	■
Cooper S (N18 B16 A)	-06/14	Gasolina	FWD	1598	147	200	02.10-06.15	■
Cooper S JCW (N18 B16 A)		Gasolina	FWD	1598	147	200	11.11-04.15	■
John Cooper Works (W11 B16 A)		Gasolina	FWD	1598	155	210	07.04-11.07	■

MINI (R58) 12.10-05.15

Coupe (Supermini car-B Segment)

Cooper S (N18 B16 A)	10/11-	Gasolina	FWD	1598	120	163	12.10-04.15	■
Cooper S (N14 B16 A)	10/11-	Gasolina	FWD	1598	135	184	12.10-04.15	■
Cooper S (N18 B16 A)	10/11-	Gasolina	FWD	1598	135	184	12.10-04.15	■
Cooper S JCW (N18 B16 A)	10/11-	Gasolina	FWD	1598	147	200	12.10-04.15	■

MINI (R50, R53) 06.01-09.06

Hatchback (Supermini car-B Segment)

Cooper (N12 B16 A)		Gasolina	FWD	1598	88	120	10.06-02.12	■
--------------------	--	----------	-----	------	----	-----	-------------	---

LISTA DE APLICACIONES - BUYERS GUIDE

Cooper (N16 B16 A)		Gasolina	FWD	1598	88	120	10.06-02.12	■
Cooper S (N18 B16 A)		Gasolina	FWD	1598	120	163	03.10-11.13	■
Cooper S (N14 B16 A)		Gasolina	FWD	1598	128	174	10.06-02.10	■
Cooper S (N14 B16 AB)		Gasolina	FWD	1598	128	174	10.06-02.10	■
Cooper S (N18 B16 A)		Gasolina	FWD	1598	135	184	03.10-11.13	■
Cooper S John Cooper Works (N18 B16 A)		Gasolina	FWD	1598	147	200	01.12-11.13	■
S Works (W11 B16 A)		Gasolina	FWD	1598	149	203	11.03-06.05	■
John Cooper Works (N14 B16 C)		Gasolina	FWD	1598	155	211	11.07-11.13	■
John Cooper Works (N18 B16 C)		Gasolina	FWD	1598	155	211	11.07-11.13	■
Works (W11 B16 A)		Gasolina	FWD	1598	155	210	11.03-09.06	■
John Cooper Works (W11 B16 A)	07/06-	Gasolina	FWD	1598	160	218	03.06-09.06	■
MINI CLUBMAN (R55) 10.06-12.15					Estate (Supermini car-B Segment)			
Cooper (N12 B16 A)		Gasolina	FWD	1598	88	120	10.07-12.13	■
Cooper (N16 B16 A)		Gasolina	FWD	1598	88	120	10.07-12.13	■
Cooper S (N14 B16 A)		Gasolina	FWD	1598	120	163	10.07-06.14	■
Cooper S (N14 B16 AB)		Gasolina	FWD	1598	120	163	10.07-06.14	■
Cooper S (N18 B16 A)		Gasolina	FWD	1598	120	163	10.07-06.14	■
Cooper S (N14 B16 A)		Gasolina	FWD	1598	128	174	08.07-07.10	■
Cooper S (N14 B16 AB)		Gasolina	FWD	1598	128	174	08.07-07.10	■
Cooper S (N18 B16 A)		Gasolina	FWD	1598	135	184	03.10-06.14	■
Cooper S (N18 B16 A)		Gasolina	FWD	1598	147	200	03.10-06.14	■
Cooper D (9HZ (DV6TED4))		Diesel	FWD	1560	80	109	10.07-02.10	■
MINI CLUBVAN (R55) 12.12-06.14					Estate Van (Supermini car-B Segment)			
Cooper D (N47 C20 A)		Diesel	FWD	1995	82	112	12.12-06.14	■