

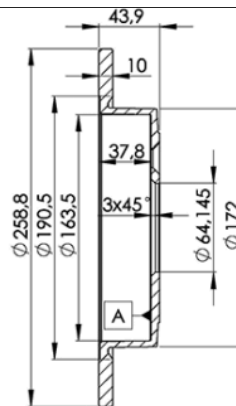
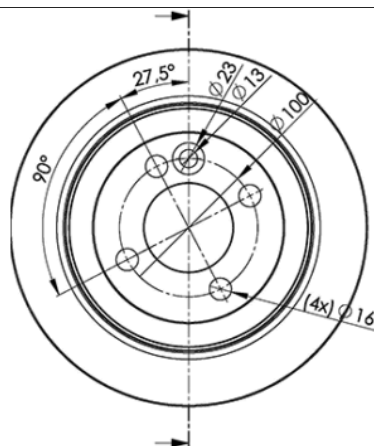
LISTA DE APLICACIONES - BUYERS GUIDE

78BD8571-2



Weight: 7.092

O.E.M.	MAKE
34 21 1 503 070	MINI
34 21 6 774 987	MINI



78BD8571-2

E1 90R-02C0415/0023



Ø258.8x10x43.9

MAKE
HONDA
MINI



Trac.	CC	Kw	CV
-------	----	----	----



Front / Rear

HONDA

STREAM (RN) 05.01-

MPV (Compact MPV-M1 Segment)

1.7 16V (RN1) (D17A2)		Gasolina	FWD	1668	92	125	05.01-09.06	■
1.7 16V (RN1) (D17A5)		Gasolina	FWD	1668	92	125	05.01-09.06	■
2.0 16V (RN3) (K20A1)		Gasolina	FWD	1998	115	156	05.01-09.06	■
2.0 16V (RN3) (K20A5)		Gasolina	FWD	1998	115	156	05.01-09.06	■

MINI

MINI (R52) 04.04-07.08

Convertible (Supermini car-B Segment)

One (W10 B16 A)		Gasolina	FWD	1598	66	90	07.04-11.07	■
One (N16 B16 A)	-06/14	Gasolina	FWD	1598	72	98	09.09-06.15	■
Cooper (W10 B16 A)		Gasolina	FWD	1598	85	116	04.04-07.08	■
Cooper (N12 B16 A)		Gasolina	FWD	1598	85	116	12.08-06.15	■
Cooper (N16 B16 A)		Gasolina	FWD	1598	85	116	12.08-06.15	■
Cooper (N16 B16 A)		Gasolina	FWD	1598	85	115	11.11-04.15	■
Cooper (N12 B16 A)		Gasolina	FWD	1598	88	120	12.08-07.10	■
Cooper (N16 B16 A)	-06/14	Gasolina	FWD	1598	90	122	03.10-06.15	■
Cooper (N16 B16 A)		Gasolina	FWD	1598	90	122	11.11-04.15	■
Cooper S (W11 B16 A)		Gasolina	FWD	1598	120	163	07.04-11.07	■
Cooper S (N14 B16 A)		Gasolina	FWD	1598	120	163	10.07-06.15	■
Cooper S (N18 B16 A)		Gasolina	FWD	1598	120	163	10.07-06.15	■
Cooper S (N18 B16 A)		Gasolina	FWD	1598	120	163	11.11-04.15	■
Cooper S (W11 B16 A)		Gasolina	FWD	1598	125	170	07.04-07.08	■
Cooper S (N14 B16 A)		Gasolina	FWD	1598	128	174	12.08-07.10	■
Cooper S (N14 B16 AB)		Gasolina	FWD	1598	128	174	12.08-07.10	■

LISTA DE APLICACIONES - BUYERS GUIDE

Cooper S (N18 B16 A)	-06/14	Gasolina	FWD	1598	135	184	02.10-06.15	■
Cooper S (N18 B16 A)		Gasolina	FWD	1598	135	184	11.11-04.15	■
Cooper S (N14 B16 A)		Gasolina	FWD	1598	141	192	04.08-07.10	■
Cooper S (N14 B16 AB)		Gasolina	FWD	1598	141	192	04.08-07.10	■
Cooper S (N18 B16 A)	-06/14	Gasolina	FWD	1598	147	200	02.10-06.15	■
Cooper S JCW (N18 B16 A)		Gasolina	FWD	1598	147	200	11.11-04.15	■
John Cooper Works (W11 B16 A)		Gasolina	FWD	1598	155	210	07.04-11.07	■
Cooper D (N47 C16 A)		Diesel	FWD	1598	82	112	05.09-11.13	■
Cooper D (N47 C20 A)	-06/14	Diesel	FWD	1995	82	112	02.11-05.15	■
Cooper SD (N47 C20 A)		Diesel	FWD	1995	100	136	01.11-05.15	■
Cooper SD (N47 C20 A)		Diesel	FWD	1995	100	136	11.11-04.15	■
Cooper SD (N47 C20 A)	-06/14	Diesel	FWD	1995	105	143	06.09-05.15	■
Cooper SD (N47 C20 A)		Diesel	FWD	1995	105	143	11.11-04.15	■
MINI (R58) 12.10-05.15					Coupe (Supermini car-B Segment)			
Cooper (N16 B16 A)	10/11-	Gasolina	FWD	1598	85	115	12.10-04.15	■
1.6 Cooper (N16 B16 A)		Gasolina	FWD	1598	88	120	10.14-05.15	■
Cooper (N16 B16 A)	10/11-	Gasolina	FWD	1598	90	122	12.10-04.15	■
Cooper S (N18 B16 A)	10/11-	Gasolina	FWD	1598	120	163	12.10-04.15	■
Cooper S (N14 B16 A)	10/11-	Gasolina	FWD	1598	135	184	12.10-04.15	■
Cooper S (N18 B16 A)	10/11-	Gasolina	FWD	1598	135	184	12.10-04.15	■
Cooper S JCW (N18 B16 A)	10/11-	Gasolina	FWD	1598	147	200	12.10-04.15	■
Cooper SD (N47 C20 A)	10/11-	Diesel	FWD	1995	100	136	12.10-05.15	■
Cooper SD (N47 C20 A)	10/11-	Diesel	FWD	1995	105	143	12.10-05.15	■
MINI (R50, R53) 06.01-09.06					Hatchback (Supermini car-B Segment)			
One (N12 B14 A)		Gasolina	FWD	1397	55	75	03.09-03.10	■
One (N12 B14 A)	04/07-	Gasolina	FWD	1397	70	95	11.06-03.10	■
One (W10 B14 A)		Gasolina	FWD	1398	55	75	04.03-09.06	■
One (N16 B16 A)		Gasolina	FWD	1598	55	75	03.10-11.13	■
One (W10 B16 A)		Gasolina	FWD	1598	66	90	06.01-09.06	■
One (N16 B16 A)		Gasolina	FWD	1598	72	98	03.10-11.13	■
Cooper (W10 B16 A)		Gasolina	FWD	1598	85	116	06.01-09.06	■
Cooper (N12 B16 A)		Gasolina	FWD	1598	85	115	09.06-11.13	■
Cooper (N16 B16 A)		Gasolina	FWD	1598	85	115	09.06-11.13	■
Cooper (N12 B16 A)	11/06-	Gasolina	FWD	1598	88	120	10.06-02.12	■
Cooper (N16 B16 A)	11/06-	Gasolina	FWD	1598	88	120	10.06-02.12	■
Cooper (N12 B16 A)		Gasolina	FWD	1598	90	122	09.09-11.13	■
Cooper (N16 B16 A)		Gasolina	FWD	1598	90	122	09.09-11.13	■
Cooper S (W11 B16 A)		Gasolina	FWD	1598	120	163	03.02-09.06	■
Cooper S (N18 B16 A)		Gasolina	FWD	1598	120	163	03.10-11.13	■
Cooper S (W11 B16 A)		Gasolina	FWD	1598	125	170	07.04-09.06	■
Cooper S (N14 B16 A)	11/06-	Gasolina	FWD	1598	128	174	10.06-02.10	■
Cooper S (N14 B16 AB)	11/06-	Gasolina	FWD	1598	128	174	10.06-02.10	■
Cooper S (N18 B16 A)		Gasolina	FWD	1598	135	184	03.10-11.13	■
Cooper S John Cooper Works (N18 B16 A)		Gasolina	FWD	1598	147	200	01.12-11.13	■
S Works (W11 B16 A)		Gasolina	FWD	1598	149	203	11.03-06.05	■
Works (W11 B16 A)		Gasolina	FWD	1598	155	210	11.03-09.06	■
John Cooper Works (W11 B16 A)		Gasolina	FWD	1598	160	218	03.06-09.06	■
One LPG (N12 B14 A)		Gasol./Gas (LPG)	FWD	1397	55	75	03.09-03.10	■
One D (1ND)		Diesel	FWD	1364	55	75	06.03-09.06	■
One D (W17 D14 (1ND))		Diesel	FWD	1364	65	88	06.03-09.06	■

LISTA DE APLICACIONES - BUYERS GUIDE

One D (9HZ (DV6TED4))	03/10-	Diesel	FWD	1560	66	90	06.09-07.10	■
Cooper D (9HZ (DV6TED4))	04/07-	Diesel	FWD	1560	80	109	11.06-09.10	■
Cooper D (W16 D16 (9HZ))	04/07-	Diesel	FWD	1560	80	109	11.06-09.10	■
One D (N47 C16 A)		Diesel	FWD	1598	66	90	07.10-11.13	■
Cooper D (N47 C16 A)		Diesel	FWD	1598	82	112	06.10-11.13	■
Cooper D (N47 C20 A)		Diesel	FWD	1995	82	112	02.11-11.13	■
Cooper SD (N47 C20 A)		Diesel	FWD	1995	100	136	02.11-11.13	■
Cooper SD (N47 C20 A)		Diesel	FWD	1995	105	143	02.11-11.13	■
MINI CLUBMAN (R55) 10.06-12.15					Estate (Supermini car-B Segment)			
One (N12 B14 A)		Gasolina	FWD	1397	70	95	03.09-02.10	■
One (N16 B16 A)		Gasolina	FWD	1598	72	98	03.10-06.14	■
Cooper (N16 B16 A)		Gasolina	FWD	1598	85	115	03.10-06.14	■
Cooper (N12 B16 A)		Gasolina	FWD	1598	88	120	10.07-12.13	■
Cooper (N16 B16 A)		Gasolina	FWD	1598	88	120	10.07-12.13	■
Cooper (N16 B16 A)		Gasolina	FWD	1598	90	122	03.10-06.14	■
Cooper S (N14 B16 A)		Gasolina	FWD	1598	120	163	10.07-06.14	■
Cooper S (N14 B16 AB)		Gasolina	FWD	1598	120	163	10.07-06.14	■
Cooper S (N18 B16 A)		Gasolina	FWD	1598	120	163	10.07-06.14	■
Cooper S (N14 B16 A)		Gasolina	FWD	1598	128	174	08.07-07.10	■
Cooper S (N14 B16 AB)		Gasolina	FWD	1598	128	174	08.07-07.10	■
Cooper S (N18 B16 A)		Gasolina	FWD	1598	135	184	03.10-06.14	■
Cooper S (N18 B16 A)		Gasolina	FWD	1598	147	200	03.10-06.14	■
John Cooper Works (N14 B16 C)		Gasolina	FWD	1598	155	211	11.07-06.14	■
John Cooper Works (N18 B16 C)		Gasolina	FWD	1598	155	211	11.07-06.14	■
Cooper D (9HZ (DV6TED4))		Diesel	FWD	1560	80	109	10.07-02.10	■
One D (N47 C16 A)		Diesel	FWD	1598	66	90	03.10-06.14	■
Cooper D (N47 C16 A)		Diesel	FWD	1598	82	112	03.10-06.14	■
Cooper D (N47 C20 A)		Diesel	FWD	1995	82	112	02.11-06.14	■
Cooper SD (N47 C20 A)		Diesel	FWD	1995	100	136	02.11-06.14	■
Cooper SD (N47 C20 A)		Diesel	FWD	1995	105	143	02.11-06.14	■
MINI CLUBVAN (R55) 12.12-06.14					Estate Van (Supermini car-B Segment)			
One (N16 B16 A)		Gasolina	FWD	1598	72	98	12.12-06.14	■
Cooper (N16 B16 A)		Gasolina	FWD	1598	90	122	12.12-06.14	■
Cooper D (N47 C16 A)		Diesel	FWD	1598	82	112	12.12-06.14	■
Cooper D (N47 C20 A)		Diesel	FWD	1995	82	112	12.12-06.14	■