

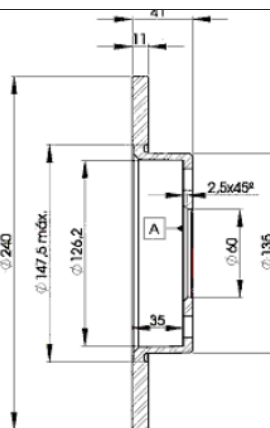
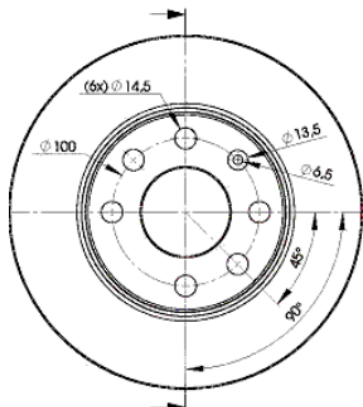
LISTA DE APLICACIONES - BUYERS GUIDE

78BD9020-2



Weight: 6.940

O.E.M.	MAKE
5 69 020	OPEL



78BD9020-2

E1 90R-02C0415/0036



Ø240x11x41

MAKE
OPEL
VAUXHALL



Trac.	CC	Kw	CV		
					Front / Rear

OPEL

CORSA C (X01) 09.00-						Hatchback Van (LCVs-N1 Segment)			
1.2 16V (F08, W5L) (Z 12 XE)	vehicles without ABS	Gasolina	FWD	1199	55	75	09.00-07.03	■	
1.2 (F08, W5L) (Z 12 XEP)	vehicles without ABS	Gasolina	FWD	1229	59	80	07.05-06.06	■	
CORSA C / VITA C (X01) 09.00-12.09						Hatchback (Supermini car-B Segment)			
1.0 (F08, F68) (Z 10 XE)	vehicles without ABS	Gasolina	FWD	973	43	58	09.00-06.03	■	
1.0 (F08, F68) (Z 10 XEP)	vehicles without ABS	Gasolina	FWD	998	44	60	06.03-12.09	■	
1.2 (F08, F68) (Z 12 XE)	vehicles without ABS	Gasolina	FWD	1199	55	75	09.00-12.09	■	
1.2 Twinport (F08, F68) (Z 12 XEP)	vehicles without ABS	Gasolina	FWD	1229	59	80	07.04-12.09	■	
1.4 (F08, F68)		Gasolina	FWD	1389	60	82	01.02-12.09	■	

VAUXHALL

CORSA Mk II (C) (X01) 08.00-04.07						Hatchback (Supermini car-B Segment)			
1.0 12V (F08, F68) (Z 10 XE)	vehicles without ABS	Gasolina	FWD	973	43	58	09.00-10.03	■	
1.0 12V (F08, F68) (Z 10 XEP)	vehicles without ABS	Gasolina	FWD	998	44	60	11.03-10.06	■	
1.2 16V (F08, F68) (Z 12 XE)	vehicles without ABS	Gasolina	FWD	1199	55	75	09.00-10.06	■	
1.2 Twinport (F08, F68) (Z 12 XEP)		Gasolina	FWD	1229	59	80	07.04-10.06	■	
1.2 16V Dualfuel (F08) (Z 12 XE)	vehicles without ABS	Gasol./G as (LPG)	FWD	1199	55	75	08.01-10.06	■	
CORSAVAN Mk II (C) (X01) 09.00-11.06						Hatchback Van (LCVs-N1 Segment)			
1.2 16V (F08) (Z 12 XE)	vehicles without ABS	Gasolina	FWD	1199	55	75	09.00-06.06	■	
1.2 16V (F08) (Z 12 XEP)		Gasolina	FWD	1229	59	80	07.04-11.06	■	
1.2 16V Dualfuel (F08) (Z 12 XE)	vehicles without ABS	Gasol./G as (LPG)	FWD	1199	55	75	08.01-06.06	■	
1.2 16V Dualfuel (F08) (Z 12 XEP)		Gasol./G as (LPG)	FWD	1229	59	80	07.04-12.05	■	

