

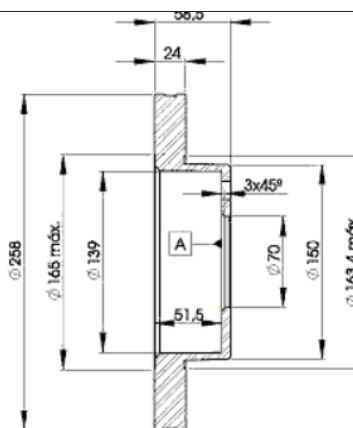
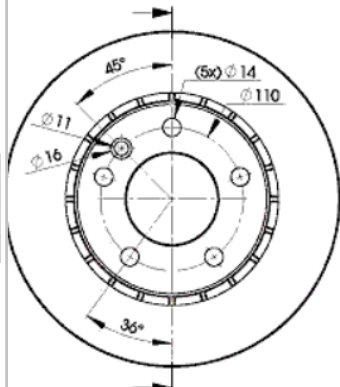
LISTA DE APLICACIONES - BUYERS GUIDE

78BD9039-2



Weight: 10.824

O.E.M.	MAKE
5 69 039	OPEL
90 223 919	VAUXHALL
90 271 134	VAUXHALL



78BD9039-2



Ø258x24x58.4

MAKE
CHEVROLET
OPEL
VAUXHALL



Trac.	CC	Kw	CV
-------	----	----	----



Front / Rear

CHEVROLET

OMEGA 09.91-12.98

Saloon (Executive car-E Segment)

2.0 (LE4(122CUL4))		Gasolina	RWD	1998	85	116	01.92-03.93	■
2.2 (19) (L06(134CUL4))		Gasolina	RWD	2198	85	116	10.94-12.98	■
2.9 GLS		Gasolina	RWD	2935	107	145	10.92-07.97	■

OPEL

OMEGA A (V87) 09.86-05.94

Estate (Executive car-E Segment)

1.8 (F35, M35) (E 18 NVR)	09/89-	Gasolina	RWD	1796	65	88	09.87-03.94	■
1.8 S (F35, M35) (18 SV)	09/89-	Gasolina	RWD	1796	66	90	09.86-03.94	■
1.8 (F35, M35) (18 SEH)	09/89-	Gasolina	RWD	1796	85	115	09.86-03.94	■
2.0 i (F35, M35) (C 20 NEJ)		Gasolina	RWD	1998	73	99	09.90-03.94	■
2.0 (F35, M35) (C 20 NEF)		Gasolina	RWD	1998	74	100	09.90-03.94	■
2.0 (F35, M35) (C 20 NE)		Gasolina	RWD	1998	85	116	09.87-04.94	■
2.0 i (F35, M35) (C 20 NE)		Gasolina	RWD	1998	85	115	09.86-04.94	■
2.0 (F35, M35) (20 SE)		Gasolina	RWD	1998	90	122	09.86-03.94	■
2.4 i (F35, M35) (C 24 NE)		Gasolina	RWD	2410	92	125	09.88-03.94	■
2.3 D (F35, M35) (23 YD)	09/89-	Diesel	RWD	2260	54	73	09.86-03.94	■
2.3 TD Interc. (F35, M35) (23 DTR)	09/89-	Diesel	RWD	2260	74	100	09.88-03.94	■

OMEGA A (V87) 09.86-05.94

Saloon (Executive car-E Segment)

1.8 N (F19, M19, N19) (18 SV)		Gasolina	RWD	1796	63	86	11.86-09.88	■
1.8 (F19, M19, N19) (E 18 NVR)	10/89-	Gasolina	RWD	1796	65	88	09.87-03.94	■
1.8 S (F19, M19, N19) (18 NV)	10/89-	Gasolina	RWD	1796	66	90	09.86-03.94	■
1.8 S (F19, M19, N19) (18 SV)	10/89-	Gasolina	RWD	1796	66	90	09.86-03.94	■
1.8 (F19, M19, N19) (18 SEH)	10/89-	Gasolina	RWD	1796	85	115	09.86-03.94	■

LISTA DE APLICACIONES - BUYERS GUIDE

2.0 (F19, M19, N19) (C 20 NEJ)		Gasolina	RWD	1998	73	99	09.90-03.94	■
2.0 (F19, M19, N19) (C 20 NEF)		Gasolina	RWD	1998	74	100	09.90-03.94	■
2.0 (F19, M19, N19)		Gasolina	RWD	1998	85	116	09.87-04.94	■
2.0 i (F19, M19, N19) (C 20 NE)		Gasolina	RWD	1998	85	115	09.86-03.94	■
2.0 (F19, M19, N19) (20 SE)		Gasolina	RWD	1998	90	122	09.86-03.94	■
2.4 i (F19, M19, N19) (C 24 NE)		Gasolina	RWD	2410	92	125	09.88-03.94	■
2.3 D (F19, M19, N19) (23 YD)	09/89-	Diesel	RWD	2260	54	73	10.86-03.94	■
2.3 TD Interc. (F19, M19, N19) (23 DTR)	09/89-	Diesel	RWD	2260	74	100	08.88-03.94	■
VAUXHALL								
CARLTON Mk III (V87) 09.86-03.94					Estate (Executive car-E Segment)			
2.0 i		Gasolina	RWD	1998	73	99	09.90-03.94	■
2.0		Gasolina	RWD	1998	74	100	09.90-03.94	■
2.0 (C 20 NE)		Gasolina	RWD	1998	85	115	09.86-03.94	■
2.0 i (20 SE)		Gasolina	RWD	1998	90	122	09.86-03.94	■
2.4 i		Gasolina	RWD	2410	92	125	09.88-03.94	■
2.3 D (23 YD)		Diesel	RWD	2260	54	73	09.86-03.94	■
2.2 TD (23 YDT)		Diesel	RWD	2260	66	90	09.86-08.88	■
2.3 TD Interc. (23 DTR)		Diesel	RWD	2260	74	100	09.88-03.94	■
CARLTON Mk III (V87) 09.86-03.94					Saloon (Executive car-E Segment)			
2.0		Gasolina	RWD	1998	73	99	09.90-03.94	■
2.0 (C 20 NEF)		Gasolina	RWD	1998	74	100	09.90-03.94	■
2.0 (C 20 NE)		Gasolina	RWD	1998	85	115	09.86-03.94	■
2.0 i (20 SE)		Gasolina	RWD	1998	90	122	09.86-03.94	■
2.4 i		Gasolina	RWD	2410	92	125	09.88-03.94	■
2.3 D (23 YD)		Diesel	RWD	2260	54	73	09.86-03.94	■
2.2 TD (23 YDT)		Diesel	RWD	2260	66	90	10.86-08.88	■
2.3 TD Interc. (23 DTR)		Diesel	RWD	2260	74	100	08.88-03.94	■