

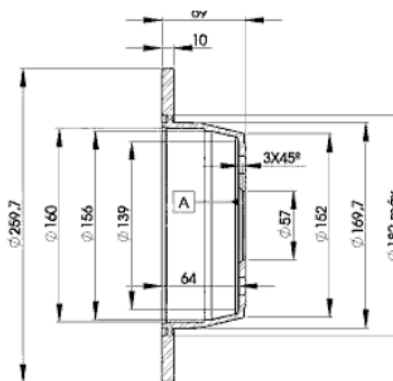
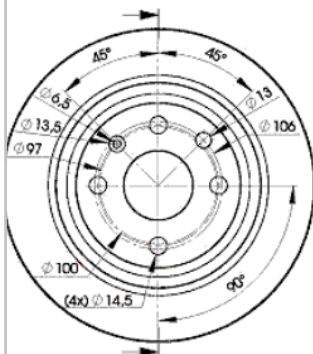
LISTA DE APLICACIONES - BUYERS GUIDE

78BD9041-2



Weight: 8.076

O.E.M.	MAKE
5 69 206	OPEL
90 34 569 9	OPEL
90 345 699	VAUXHALL
90 421 872	VAUXHALL



78BD9041-2

(E1) 90R-02C0453/0107



Ø260x10x69

MAKE
OPEL
VAUXHALL



Trac.	CC	Kw	CV		
					Front / Rear

OPEL

ASTRA F (T92) 03.93-03.01

Convertible (Compact car-C Segment)

1.8 i 16V (C 18 XEL)	Gasolina	FWD	1799	85	116	11.94-03.01	■
1.8 i 16V (X 18 XE)	Gasolina	FWD	1799	85	116	11.94-03.01	■

ASTRA F (T92) 10.91-01.99

Estate Van (Compact car-C Segment)

1.6 i 16V (F70) (X 16 XEL)	Gasolina	FWD	1598	74	100	08.94-03.98	■
1.7 TD (F70) (17 TD)	Diesel	FWD	1686	60	82	03.95-02.98	■

ASTRA F (T92) 09.91-01.01

Estate (Compact car-C Segment)

1.8 (F35, M35) (18 SE)	Gasolina	FWD	1796	85	116	11.91-07.93	■
1.8 i 16V (F35, M35) (C 18 XEL)	Gasolina	FWD	1799	85	116	07.94-01.98	■
1.8 i 16V (F35, M35) (X 18 XE)	Gasolina	FWD	1799	85	116	07.94-01.98	■
2.0 i 16V (F35, M35) (X 20 XEV)	Gasolina	FWD	1998	100	136	02.95-01.98	■
2.0 i 16V (F35, M35) (C 20 XE)	Gasolina	FWD	1998	110	150	03.93-01.98	■

ASTRA F (T92) 09.91-10.00

Hatchback (Compact car-C Segment)

1.8 (F08, M08, F68, M68) (18 SE)	Gasolina	FWD	1796	85	116	11.91-07.93	■
1.8 i 16V (F08, M08, F68, M68) (C 18 XEL)	Gasolina	FWD	1799	85	116	09.94-01.98	■
1.8 i 16V (F08, M08, F68, M68) (X 18 XE)	Gasolina	FWD	1799	85	116	09.94-01.98	■
1.8 i 16V (F08, M08, F68, M68) (C 18 XE)	Gasolina	FWD	1799	92	125	06.93-08.94	■
2.0 i 16V (F08, M08, F68, M68) (X 20 XEV)	Gasolina	FWD	1998	100	136	02.95-01.98	■
2.0 GSI 16V (F08, M08, F68, M68) (C 20 XE)	Gasolina	FWD	1998	110	150	09.91-01.98	■

ASTRA F (T92) 09.91-01.01

Saloon (Compact car-C Segment)

1.8 i 16V (F19, M19) (18 SE)	Gasolina	FWD	1796	82	112	09.95-09.96	■
1.8 i 16V (F19, M19) (C 18 SEL)	Gasolina	FWD	1799	85	116	11.94-09.98	■

LISTA DE APLICACIONES - BUYERS GUIDE

1.8 i 16V (F19, M19) (C 18 XEL)		Gasolina	FWD	1799	85	116	11.94-09.98	■
1.8 i 16V (F19, M19) (X 18 XE)		Gasolina	FWD	1799	85	116	11.94-09.98	■
1.8 i 16V (F19, M19) (C 18 XE)		Gasolina	FWD	1799	92	125	06.93-10.94	■
2.0 i (F19, M19) (C 20 NE)		Gasolina	FWD	1998	85	115	03.92-09.98	■
2.0 i 16V (F19, M19) (X 20 XEV)		Gasolina	FWD	1998	100	136	02.95-09.98	■
VECTRA A (J89) 04.88-12.95					Hatchback (Large family car-D Segment)			
2.0 i 16V (F68, M68) (X 20 XEV)		Gasolina	FWD	1998	100	136	08.92-08.95	■
2.0 i 16V (F68, M68) (20 XEJ)		Gasolina	FWD	1998	110	150	02.89-10.90	■
VECTRA A (J89) 08.88-12.95					Saloon (Large family car-D Segment)			
2.0 i 16V (F19, M19) (X 20 XEV)		Gasolina	FWD	1998	100	136	08.92-08.95	■
2.0 i 16V 4x4 (F19, M19) (X 20 XEV)		Gasolina	4WD	1998	100	136	06.94-11.95	■
VAUXHALL								
ASTRA Mk III (F) (T92) 09.91-03.01					Convertible (Compact car-C Segment)			
1.8 i (F08) (C 18 NZ)		Gasolina	FWD	1796	66	90	09.91-02.98	■
1.8 16V (C 18 XEL)		Gasolina	FWD	1799	85	116	11.94-03.01	■
1.8 16V (X 18 XE)		Gasolina	FWD	1799	85	116	11.94-03.01	■
2.0 i 16V (X 20 XEV)		Gasolina	FWD	1998	100	136	01.94-02.98	■
ASTRA Mk III (F) (T92) 03.91-12.98					Estate (Compact car-C Segment)			
1.8 i 16V (C 18 XEL)		Gasolina	FWD	1796	85	115	09.94-02.98	■
1.8 i 16V (C 18 XE)		Gasolina	FWD	1796	92	125	09.94-02.98	■
2.0 i 16V (X 20 XEV)		Gasolina	FWD	1998	100	136	01.94-02.98	■
ASTRA Mk III (F) (T92) 09.91-02.98					Hatchback (Compact car-C Segment)			
1.8 i (C 18 NZ)	05/92-	Gasolina	FWD	1796	66	90	09.91-02.98	■
1.8 i 16V (C 18 XEL)		Gasolina	FWD	1796	85	115	09.94-02.98	■
1.8 i 16V (C 18 XE)		Gasolina	FWD	1796	92	125	09.94-02.98	■
2.0 i (C 20 NE)		Gasolina	FWD	1998	85	115	09.91-02.98	■
2.0 i 16V (X 20 XEV)		Gasolina	FWD	1998	100	136	01.94-02.98	■
2.0 i 16V (C 20 XE)		Gasolina	FWD	1998	110	150	09.91-02.98	■
ASTRA Mk III (F) (T92) 09.91-09.98					Saloon (Compact car-C Segment)			
1.8 i (C 18 NZ)		Gasolina	FWD	1796	66	90	03.92-09.98	■
1.8 i 16V (18 SE)		Gasolina	FWD	1796	82	112	09.95-02.98	■
1.8 i 16V (C 18 XEL)		Gasolina	FWD	1796	85	115	01.94-12.96	■
1.8 i 16V (C 18 XE)		Gasolina	FWD	1799	92	125	06.93-10.94	■
2.0 i (C 20 NE)		Gasolina	FWD	1998	85	115	03.92-09.98	■
2.0 i 16V (X 20 XEV)		Gasolina	FWD	1998	100	136	02.95-09.98	■
ASTRAVAN Mk III (F) (T92) 01.91-08.98					Estate Van (Compact car-C Segment)			
1.7 TD (F70) (17 TD)		Diesel	FWD	1686	60	82	09.95-08.96	■
1.7 D (F70) (17 D)		Diesel	FWD	1699	42	57	09.91-08.93	■
CAVALIER Mk III (J89) 08.88-11.95					Saloon (Large family car-D Segment)			
2.0 i 4x4 (20 NE)	09/92-	Gasolina	4WD	1998	85	115	01.91-10.92	■
2.0 i 4x4 (C 20 NE)	09/92-	Gasolina	4WD	1998	85	115	01.91-10.92	■
2.0 i Cat (20 NE)	09/92-	Gasolina	FWD	1998	85	115	09.88-11.95	■
2.0 i Cat (C 20 NE)	09/92-	Gasolina	FWD	1998	85	115	09.88-11.95	■
2.0 SRi 16V (X 20 XEV)		Gasolina	FWD	1998	100	136	09.92-08.95	■
CAVALIER Mk III CC (J89) 09.88-11.95					Hatchback (Large family car-D Segment)			
2.0 i 16V (X 20 XEV)		Gasolina	FWD	1998	100	136	09.92-08.95	■