

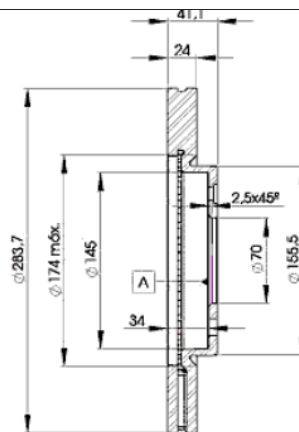
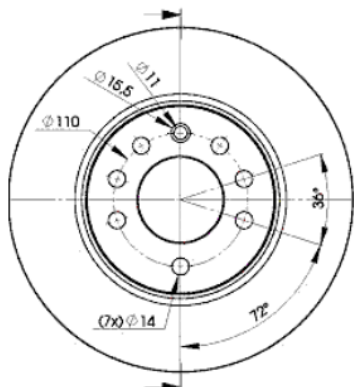
LISTA DE APLICACIONES - BUYERS GUIDE

78BD9047-2



Weight: 13.760

O.E.M.	MAKE
42 41 428	SAAB
5 69 047	OPEL
90 374 545	VAUXHALL
90 442 513	VAUXHALL



78BD9047-2

E1 90R-02C0074/0857



Ø284x24x41

MAKE
OPEL
SAAB
VAUXHALL



Trac.	CC	Kw	CV		
					Front / Rear

OPEL

CALIBRA (C89) 08.89-07.97

					Coupe (Sports car-S Segment)			
2.0 i Turbo 4x4 (M07) (C 20 LET)		Gasolina	4WD	1998	150	204	08.91-07.97	■
2.5 i V6 (M07) (C 25 XE)		Gasolina	FWD	2498	125	170	04.93-07.97	■
2.5 i V6 (M07) (X 25 XE)		Gasolina	FWD	2498	125	170	04.93-07.97	■

VECTRA A (J89) 04.88-12.95

					Hatchback (Large family car-D Segment)			
2.5 V6 (F68, M68) (C 25 XE)		Gasolina	FWD	2498	125	170	02.93-11.95	■

VECTRA A (J89) 08.88-12.95

					Saloon (Large family car-D Segment)			
2.0 i Turbo 4x4 (F19, M19) (C 20 LET)		Gasolina	4WD	1998	150	204	06.94-11.95	■
2.5 CD		Gasolina	FWD	2498	125	170	08.92-08.95	■
2.5 V6 (F19, M19) (C 25 XE)		Gasolina	FWD	2498	125	170	02.93-11.95	■

SAAB

900 II 09.93-04.99

					Convertible (Compact executive car-D Segment)			
2.0 i (B204I)	-08/96	Gasolina	FWD	1985	96	131	12.93-02.98	■
2.0 -16 Turbo (B204L)	-08/96	Gasolina	FWD	1985	136	185	12.93-02.98	■
2.3 -16 (B234I)	-08/96	Gasolina	FWD	2290	110	150	12.93-02.98	■
2.5 -24 V6 (B258I)	-08/96	Gasolina	FWD	2498	125	170	12.93-02.98	■

900 II 12.93-04.99

					Coupe (Compact executive car-D Segment)			
2.0 i (B204I)	-08/96	Gasolina	FWD	1985	96	131	08.94-02.98	■
2.0 -16 Turbo (B204L)	-08/96	Gasolina	FWD	1985	136	185	12.93-02.98	■
2.3 -16 (B234I)	-08/96	Gasolina	FWD	2290	110	150	12.93-02.98	■
2.5 -24 V6 (B258I)	-08/96	Gasolina	FWD	2498	125	170	12.93-02.98	■

LISTA DE APLICACIONES - BUYERS GUIDE

900 II 07.93-04.99					Hatchback (Compact executive car-D Segment)			
2.0 i (B204I)	-08/96	Gasolina	FWD	1985	96	131	08.94-02.98	■
2.0 -16 Turbo (B204L)	-08/96	Gasolina	FWD	1985	136	185	07.93-02.98	■
2.3 -16 (B234I)	-08/96	Gasolina	FWD	2290	110	150	07.93-02.98	■
2.5 -24 V6 (B258I)	-08/96	Gasolina	FWD	2498	125	170	07.93-02.98	■
VAUXHALL								
CALIBRA (C89) 06.90-07.97					Coupe (Sports car-S Segment)			
2.0 i Turbo 4x4 (C 20 LET)		Gasolina	4WD	1998	150	204	03.92-07.97	■
2.5 i V6 (C 25 XE)		Gasolina	FWD	2498	125	170	04.93-07.97	■
2.5 i V6 (X 25 XE)		Gasolina	FWD	2498	125	170	04.93-07.97	■
CAVALIER Mk III (J89) 08.88-11.95					Saloon (Large family car-D Segment)			
2.0 i Turbo 4x4 (C 20 LET)		Gasolina	4WD	1998	150	204	09.92-06.94	■
2.5 V6 (C 25 XE)		Gasolina	FWD	2498	125	170	08.88-06.94	■
CAVALIER Mk III CC (J89) 09.88-11.95					Hatchback (Large family car-D Segment)			
2.5 V6 (C 25 XE)		Gasolina	FWD	2498	125	170	09.88-06.94	■