

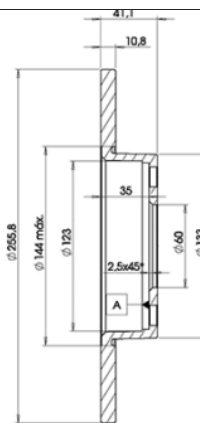
LISTA DE APLICACIONES - BUYERS GUIDE

78BD9058-2



Weight: 7.960

O.E.M.	MAKE
5 69 058	OPEL
90 497 303	VAUXHALL
91 176 76	OPEL



78BD9058-2



Ø255.8x10.8x41.1

MAKE
OPEL
VAUXHALL



Trac.	CC	Kw	CV		
					Front / Rear

OPEL

ASTRA G (T98) 02.98-07.05

Estate (Compact car-C Segment)

1.2 16V (F35) (X 12 XE)	vehicles without ABS, drum brak.rear axle, -ch 18999999	Gasolina	FWD	1199	48	65	02.98-09.00	■
1.2 16V (F35) (Z 12 XE)	vehicles without ABS, drum brak.rear axle, -ch 18999999	Gasolina	FWD	1199	55	75	09.00-07.04	■
1.4 16V (F35) (X 14 XE)	vehicles without ABS	Gasolina	FWD	1389	66	90	06.98-07.04	■
1.4 16V (F35) (Z 14 XE)	vehicles without ABS	Gasolina	FWD	1389	66	90	06.98-07.04	■

ASTRA G (T98) 02.98-12.09

Hatchback (Compact car-C Segment)

1.2 16V (F08, F48) (X 12 XE)	vehicles without ABS, drum brak.rear axle, -ch 18999999	Gasolina	FWD	1199	48	65	02.98-09.00	■
1.2 16V (F08, F48) (Z 12 XE)	vehicles without ABS, -ch 18999999, drum brak.rear axle	Gasolina	FWD	1199	55	75	09.00-01.05	■
1.4 16V (F08, F48) (X 14 XE)	10/00-, -03/04, vehicles without ABS	Gasolina	FWD	1389	66	90	02.98-01.05	■
1.4 16V (F08, F48) (Z 14 XE)	10/00-, -03/04, vehicles without ABS	Gasolina	FWD	1389	66	90	02.98-01.05	■

ASTRA G (T98) 03.98-12.09

Saloon (Compact car-C Segment)

1.2 16V (F69) (X 12 XE)	vehicles without ABS, drum brak.rear axle, -ch 18999999	Gasolina	FWD	1199	48	65	09.98-09.00	■
1.2 16V (F69) (Z 12 XE)	vehicles without ABS, drum brak.rear axle, -ch 18999999	Gasolina	FWD	1199	55	75	09.00-01.05	■
1.4 (F69) (Z 14 XEP)	vehicles without ABS	Gasolina	FWD	1364	66	90	09.07-12.09	■
1.4 16V (F69) (X 14 XE)	10/00-, vehicles without ABS	Gasolina	FWD	1389	66	90	09.98-01.05	■
1.4 16V (F69) (Z 14 XE)	10/00-, vehicles without ABS	Gasolina	FWD	1389	66	90	09.98-01.05	■

ASTRA G CLASSIC Caravan (F35) 03.04-07.09

Estate (Compact car-C Segment)

1.4 (F35) (Z 14 XEP)	vehicles without ABS	Gasolina	FWD	1364	66	90	10.07-07.09	■
----------------------	----------------------	----------	-----	------	----	----	-------------	---

VAUXHALL

LISTA DE APLICACIONES - BUYERS GUIDE

ASTRA Mk IV (G) (T98) 02.98-05.05					Estate (Compact car-C Segment)			
1.2 16V	vehicles without ABS	Gasolina	FWD	1199	48	65	02.98-09.00	■
1.2 16V	vehicles without ABS	Gasolina	FWD	1199	55	75	09.00-05.05	■
ASTRA Mk IV (G) (T98) 02.98-05.05					Hatchback (Compact car-C Segment)			
1.2 16V (F08, F48)	vehicles without ABS	Gasolina	FWD	1199	48	65	02.98-09.00	■
1.2 16V (F08, F48)	vehicles without ABS	Gasolina	FWD	1199	55	75	09.00-05.05	■
1.4 16V (F08, F48) (X 14 XE)	vehicles without ABS	Gasolina	FWD	1389	66	90	02.98-05.05	■
1.4 16V (F08, F48) (Z 14 XE)	vehicles without ABS	Gasolina	FWD	1389	66	90	02.98-05.05	■
ASTRA Mk IV (G) (T98) 02.98-05.05					Saloon (Compact car-C Segment)			
1.2 16V	vehicles without ABS	Gasolina	FWD	1199	48	65	09.98-09.00	■
1.2 16V	vehicles without ABS	Gasolina	FWD	1199	55	75	09.00-05.05	■