

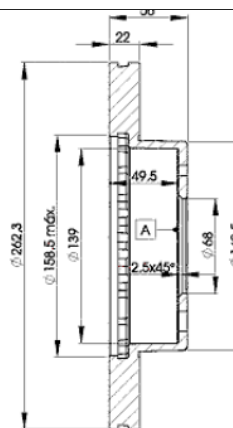
LISTA DE APLICACIONES - BUYERS GUIDE

78BD9063-2



Weight: 10.970

O.E.M.	MAKE
1 359 906	VOLVO
1 359 906 3	VOLVO



78BD9063-2



Ø262x22x56

MAKE
VOLVO



Trac.	CC	Kw	CV
-------	----	----	----



Front / Rear

VOLVO

740 (744) 04.83-12.92

Saloon (Executive car-E Segment)

2.0 (B 200 K)	Rim 14	Gasolina	RWD	1986	76	103	09.88-08.90	■
2.0 (B 200 E)	10/87-, Rim 14	Gasolina	RWD	1986	86	117	01.87-08.88	■
2.0 (B 200 G)	10/87-, Rim 14	Gasolina	RWD	1986	89	121	08.85-07.92	■
2.0 GLE (B 204 E)		Gasolina	RWD	1986	103	140	09.87-08.90	■
2.0 (B 200 ET)	10/87-, Rim 14	Gasolina	RWD	1986	118	160	01.86-08.90	■
2.3 (B 230 F)	10/87-, Rim 14	Gasolina	RWD	2315	83	113	09.85-12.89	■
2.3 (B 23 A)	10/87-, Rim 14	Gasolina	RWD	2316	84	114	08.84-07.90	■
2.3 (B 230 F)	10/87-, Rim 14	Gasolina	RWD	2316	84	114	08.84-07.90	■
2.3 (B 230 F)	10/87-, Rim 14	Gasolina	RWD	2316	85	115	08.87-07.92	■
2.3 (B 230 E)	10/87-, Rim 14	Gasolina	RWD	2316	96	131	08.84-12.92	■
2.3 (B 230 FB)	10/87-, Rim 14	Gasolina	RWD	2316	96	131	08.84-12.92	■
2.3	Rim 14	Gasolina	RWD	2316	96	131	07.90-12.92	■
2.3 (B 234 F)	Rim 14	Gasolina	RWD	2316	111	151	08.88-08.92	■
2.3 (B 234 F)	Rim 14	Gasolina	RWD	2316	114	156	08.88-07.91	■
2.3 Turbo (B 230 FT)	10/87-, Rim 14	Gasolina	RWD	2316	115	156	08.86-07.89	■
2.3 (B 234 F)	10/87-, Rim 14	Gasolina	RWD	2316	117	159	08.87-07.89	■
2.3 Turbo (B 230 FT)	Rim 14	Gasolina	RWD	2316	121	165	08.89-07.90	■
2.3 Turbo (B 230 FT)		Gasolina	RWD	2316	125	170	09.89-08.91	■
2.3 Turbo (B 230 GT)		Gasolina	RWD	2316	125	170	09.89-08.91	■
2.3 Turbo (B 230 ET)	10/87-, Rim 14	Gasolina	RWD	2316	134	182	08.85-12.88	■
2.3 Turbo (B 230 FT)	Rim 14	Gasolina	RWD	2316	140	190	08.89-07.90	■
2.4 Diesel (D 24)	10/87-, Rim 14	Diesel	RWD	2383	60	82	08.84-07.92	■
2.4 TD (D 24 T)	10/87-, Rim 14	Diesel	RWD	2383	83	113	08.84-07.90	■

LISTA DE APLICACIONES - BUYERS GUIDE

2.4 TD (D 24 TIC)	10/87-, Rim 14	Diesel	RWD	2383	90	122	08.86-10.88	■
740 Kombi (745) 08.84-12.92					Estate (Executive car-E Segment)			
2.0 (B 200 K)	Rim 14	Gasolina	RWD	1986	76	103	09.88-08.90	■
2.0 (B 200 F)	Rim 14	Gasolina	RWD	1986	82	112	08.89-07.91	■
2.0 (B 200 E)	10/87-, Rim 14	Gasolina	RWD	1986	86	117	01.87-08.88	■
2.0 (B 200 E)	10/87-, Rim 14	Gasolina	RWD	1986	89	121	08.85-07.92	■
2.0 (B 200 G)	10/87-, Rim 14	Gasolina	RWD	1986	89	121	08.85-07.92	■
2.0 16V (B 204 E)	10/87-, Rim 14	Gasolina	RWD	1986	100	136	09.87-08.90	■
2.0 GLE		Gasolina	FWD	1986	103	140	09.87-08.90	■
2.0 Turbo (B 200 ET)		Gasolina	RWD	1986	115	156	09.87-08.90	■
2.0 Turbo (B 200 ET)		Gasolina	RWD	1986	118	160	05.85-08.87	■
2.3 (B 230 F)	10/87-, Rim 14	Gasolina	RWD	2316	83	113	08.85-12.89	■
2.3 (B 230 K)	10/87-, Rim 14	Gasolina	RWD	2316	84	114	09.85-07.90	■
2.3 (B 230 F)	10/87-, Rim 14	Gasolina	RWD	2316	85	115	08.87-07.92	■
2.3 (B 230 F)		Gasolina	RWD	2316	87	118	01.88-10.90	■
2.3 (B 230 E)	10/87-, Rim 14	Gasolina	RWD	2316	96	131	08.85-07.88	■
2.3 (B 230 FB)	Rim 14	Gasolina	RWD	2316	96	131	07.90-12.92	■
2.3 (B 234 F)	Rim 14	Gasolina	RWD	2316	111	151	07.89-08.92	■
2.3 (B 234 F)	Rim 14	Gasolina	RWD	2316	114	156	08.88-07.90	■
2.3 Turbo (B 230 FT)	10/87-, Rim 14	Gasolina	RWD	2316	115	156	08.86-07.89	■
2.3 (B 234 F)	10/87-, Rim 14	Gasolina	RWD	2316	117	159	08.87-07.89	■
2.3 Turbo (B 230 FT)	Rim 14	Gasolina	RWD	2316	121	165	08.89-07.90	■
2.3 Turbo (B 230 GT)	Rim 14	Gasolina	RWD	2316	121	165	08.89-07.90	■
2.3 Turbo (B 230 FT)	Rim 14	Gasolina	RWD	2316	125	170	09.89-08.91	■
2.3 Turbo (B 230 GT)	Rim 14	Gasolina	RWD	2316	125	170	09.89-08.91	■
2.3 Turbo (B 230 ET)	10/87-, Rim 14	Gasolina	RWD	2316	134	182	08.85-07.88	■
2.3 Turbo (B 230 FT)	Rim 14	Gasolina	RWD	2316	140	190	08.89-07.90	■
2.4 Diesel (D 24)	10/87-, Rim 14	Diesel	RWD	2383	60	82	08.85-07.88	■
2.4 Turbo-Diesel (D 24 T)	10/87-, Rim 14	Diesel	RWD	2383	80	109	09.85-07.92	■
2.4 TD Interc. (D 24 TIC)	10/87-, Rim 14	Diesel	RWD	2383	90	122	08.86-07.88	■
760 (704, 764) 08.81-07.92					Saloon (Executive car-E Segment)			
2.4 TDiC		Diesel	RWD	2383	90	122	09.87-08.90	■
760 Kombi (704, 765) 01.82-07.92					Estate (Executive car-E Segment)			
2.3 (B 230 FT)		Gasolina	RWD	2316	121	165	09.83-12.90	■
2.8 (B 280 E)		Gasolina	RWD	2849	112	152	09.86-10.88	■
2.4 TD (D 24 T)		Diesel	RWD	2383	80	109	04.83-10.89	■
2.4 TDiC		Diesel	RWD	2383	90	122	09.87-08.90	■
780 (782) 04.86-11.90					Coupe (Executive car-E Segment)			
2.9 (B 280 F)		Gasolina	RWD	2849	108	147	08.87-07.90	■