

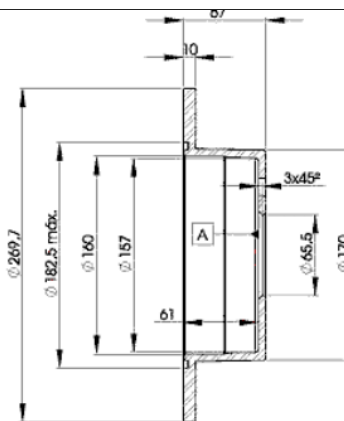
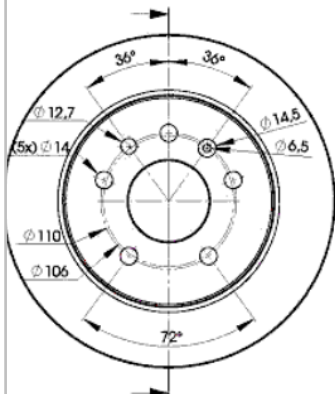
# LISTA DE APLICACIONES - BUYERS GUIDE

## 78BD9101-2



Weight: 9.196

O.E.M.	MAKE
5 69 101	OPEL
5 69 205	OPEL
90 272 328	VAUXHALL



## 78BD9101-2

E1 90R-02C0453/0098



Ø270x10x67

MAKE
CHEVROLET
OPEL
VAUXHALL



Trac.	CC	Kw	CV
-------	----	----	----



Front / Rear

### CHEVROLET

#### OMEGA 09.91-12.98

#### Saloon (Executive car-E Segment)

2.0 (LE4(122CUL4))	Gasolina	RWD	1998	85	116	01.92-03.93	■
2.2 (19) (L06(134CUL4))	Gasolina	RWD	2198	85	116	10.94-12.98	■
2.9 GLS	Gasolina	RWD	2935	107	145	10.92-07.97	■

### OPEL

#### ASTRA H TwinTop (A04) 09.05-10.10

#### Convertible (Compact car-C Segment)

1.8 (L67) (Z 18 XE)	Gasolina	FWD	1796	92	125	09.05-10.10	■
1.8 (L67) (A 18 XER)	Gasolina	FWD	1796	103	140	09.05-10.10	■
1.8 (L67) (Z 18 XER)	Gasolina	FWD	1796	103	140	09.05-10.10	■

#### COMBO C 10.01-

#### Box Body/MPV (LCVs-N1 Segment)

1.4 16V (Z 14 XEP)	Gasolina	FWD	1364	66	90	08.05-	■
1.6 (Z 16 SE)	Gasolina	FWD	1598	64	87	10.01-	■
1.6 CNG 16V (Z 16 YNG)	Gasol./Gas (CNG)	FWD	1598	69	94	06.06-	■
1.6 CNG 16V (Z 16 YNG)	Gasol./Gas (CNG)	FWD	1598	71	97	04.05-	■
1.3 CDTI 16V (Z 13 DT)	Diesel	FWD	1248	51	69	08.05-	■
1.3 CDTI 16V (Z 13 DTJ)	Diesel	FWD	1248	55	75	10.05-12.12	■
1.7 DI 16V (Y 17 DTL)	Diesel	FWD	1686	48	65	10.01-	■
1.7 DTI 16V (Y 17 DT)	Diesel	FWD	1686	55	75	10.01-	■

#### COMBO C Tour 10.01-

#### MPV (Large MPV-M1 Segment)

1.6	Gasolina	FWD	1598	62	84	10.01-09.06	■
-----	----------	-----	------	----	----	-------------	---

# LISTA DE APLICACIONES - BUYERS GUIDE

1.6 (Z 16 SE)		Gasolina	FWD	1598	64	87	10.01-09.06	■
1.6 CNG (Z 16 YNG)		Gasol./Gas (CNG)	FWD	1598	69	94	06.06-12.11	■
1.6 CNG (Z 16 YNG)		Gasol./Gas (CNG)	FWD	1598	71	97	04.05-01.11	■
1.7 DI 16V (Y 17 DTL)		Diesel	FWD	1686	48	65	10.01-06.04	■
1.7 DTI 16V (Y 17 DT)		Diesel	FWD	1686	55	75	10.01-06.04	■
<b>OMEGA A (V87) 09.86-05.94</b>					<b>Estate (Executive car-E Segment)</b>			
1.8 N (F35, M35) (18 NV)		Gasolina	RWD	1796	60	82	09.86-08.87	■
1.8 N (F35, M35) (18 SV)		Gasolina	RWD	1796	63	86	11.86-09.88	■
1.8 (F35, M35) (E 18 NVR)		Gasolina	RWD	1796	65	88	09.87-03.94	■
1.8 S (F35, M35) (18 SV)		Gasolina	RWD	1796	66	90	09.86-03.94	■
1.8 (F35, M35) (18 SEH)		Gasolina	RWD	1796	85	115	09.86-03.94	■
2.0 i (F35, M35) (C 20 NEJ)		Gasolina	RWD	1998	73	99	09.90-03.94	■
2.0 (F35, M35) (C 20 NEF)		Gasolina	RWD	1998	74	100	09.90-03.94	■
2.0 (F35, M35) (C 20 NE)		Gasolina	RWD	1998	85	116	09.87-04.94	■
2.0 i (F35, M35) (C 20 NE)		Gasolina	RWD	1998	85	115	09.86-04.94	■
2.0 (F35, M35) (20 SE)		Gasolina	RWD	1998	90	122	09.86-03.94	■
2.4 i (F35, M35) (C 24 NE)		Gasolina	RWD	2410	92	125	09.88-03.94	■
2.6		Gasolina	FWD	2580	135	184	09.87-04.94	■
2.6 i (F35, M35) (C 26 NE)		Gasolina	RWD	2594	110	150	09.90-03.94	■
3.0 (F35, M35) (C 30 LE)		Gasolina	RWD	2969	115	156	03.87-03.94	■
3.0 (F35, M35) (30 NE)		Gasolina	RWD	2969	130	177	03.87-09.90	■
3.0 Cat (F35, M35) (C 30 NE)		Gasolina	RWD	2969	130	177	03.87-03.94	■
3.0 24V (F35, M35) (C 30 SEJ)		Gasolina	RWD	2969	147	200	09.89-03.94	■
3.0 24V Omega 3000 (F35, M35) (C 30 SE)		Gasolina	RWD	2969	150	204	09.88-04.94	■
2.3 D (F35, M35) (23 YD)		Diesel	RWD	2260	54	73	09.86-03.94	■
2.3 TD (F35, M35) (23 YDT)		Diesel	RWD	2260	66	90	09.86-08.88	■
2.3 TD Interc. (F35, M35) (23 DTR)		Diesel	RWD	2260	74	100	09.88-03.94	■
<b>OMEGA A (V87) 09.86-05.94</b>					<b>Saloon (Executive car-E Segment)</b>			
1.8 N (F19, M19, N19) (18 NV)		Gasolina	RWD	1796	60	82	09.86-08.87	■
1.8 N (F19, M19, N19) (18 SV)		Gasolina	RWD	1796	63	86	11.86-09.88	■
1.8 (F19, M19, N19) (E 18 NVR)		Gasolina	RWD	1796	65	88	09.87-03.94	■
1.8 S (F19, M19, N19) (18 NV)		Gasolina	RWD	1796	66	90	09.86-03.94	■
1.8 S (F19, M19, N19) (18 SV)		Gasolina	RWD	1796	66	90	09.86-03.94	■
1.8 (F19, M19, N19) (18 SEH)		Gasolina	RWD	1796	85	115	09.86-03.94	■
2.0 (F19, M19, N19) (C 20 NEJ)		Gasolina	RWD	1998	73	99	09.90-03.94	■
2.0 (F19, M19, N19) (C 20 NEF)		Gasolina	RWD	1998	74	100	09.90-03.94	■
2.0 (F19, M19, N19)		Gasolina	RWD	1998	85	116	09.87-04.94	■
2.0 i (F19, M19, N19) (C 20 NE)		Gasolina	RWD	1998	85	115	09.86-03.94	■
2.0 (F19, M19, N19) (20 SE)		Gasolina	RWD	1998	90	122	09.86-03.94	■
2.4 i (F19, M19, N19) (C 24 NE)		Gasolina	RWD	2410	92	125	09.88-03.94	■
2.6 i (F19, M19, N19) (C 26 NE)		Gasolina	RWD	2594	110	150	09.90-03.94	■
3.0 (3000) (F19, M19, N19) (C 30 LE)		Gasolina	RWD	2969	115	156	03.87-12.87	■
3.0 (3000) (F19, M19, N19) (30 NE)		Gasolina	RWD	2969	130	177	03.87-09.90	■
3.0 (3000) Cat (F19, M19, N19) (C 30 NE)		Gasolina	RWD	2969	130	177	03.88-03.94	■
3.0 24V (3000) (F19, M19, N19) (C 30 SEJ)		Gasolina	RWD	2969	147	200	09.89-03.94	■
3.0 24V (3000) (F19, M19, N19) (C 30 SE)		Gasolina	RWD	2969	150	204	09.89-03.94	■
3.0 24V Evolution500 (F19, M19, N19) (C 30 XEI)		Gasolina	RWD	2969	169	230	03.91-07.92	■
3.6 24V Lotus (F19, M19, N19) (C 36 GET)		Gasolina	RWD	3638	277	377	08.90-09.92	■

# LISTA DE APLICACIONES - BUYERS GUIDE

2.3 D (F19, M19, N19) (23 YD)		Diesel	RWD	2260	54	73	10.86-03.94	■
2.3 TD (F19, M19, N19) (23 YDT)		Diesel	RWD	2260	66	90	10.86-08.88	■
2.3 TD Interc. (F19, M19, N19) (23 DTR)		Diesel	RWD	2260	74	100	08.88-03.94	■
<b>SENATOR A (29_) 02.78-08.87</b>					<b>Saloon (Luxury car-F Segment)</b>			
2.8 (28 H)		Gasolina	RWD	2784	103	140	02.78-04.81	■
3.0 (30 H)		Gasolina	RWD	2969	110	150	04.78-07.82	■
3.0 (C 30 LE)		Gasolina	RWD	2969	115	156	09.85-08.87	■
3.0 E (30 E)		Gasolina	RWD	2969	132	180	02.78-12.86	■
<b>SENATOR B (V88) 09.87-09.93</b>					<b>Saloon (Luxury car-F Segment)</b>			
2.5 i (P19) (25 NE)		Gasolina	RWD	2490	103	140	09.90-09.93	■
2.6 i (P19) (C 26 NE)		Gasolina	RWD	2594	110	150	09.90-09.93	■
3.0 (P19) (C 30 LE)		Gasolina	RWD	2969	115	156	09.87-09.93	■
3.0 (P19) (30 NE)		Gasolina	RWD	2969	130	177	01.88-09.90	■
3.0 i Cat (P19) (C 30 NE)		Gasolina	RWD	2969	130	177	01.88-09.93	■
3.0 24V (P19) (C 30 SE)		Gasolina	RWD	2969	150	204	09.89-09.93	■
3.6 (P19) (C 36 NEI)		Gasolina	RWD	3615	147	200	09.91-08.93	■
<b>VAUXHALL</b>								
<b>CARLTON Mk III (V87) 09.86-03.94</b>					<b>Estate (Executive car-E Segment)</b>			
1.8 N		Gasolina	RWD	1796	60	82	09.86-08.87	■
1.8 (E 18 NVR)		Gasolina	RWD	1796	65	88	09.87-03.94	■
1.8 S (18 SV)		Gasolina	RWD	1796	66	90	09.86-03.94	■
1.8 i (18 SEH)		Gasolina	RWD	1796	85	115	09.86-03.94	■
2.0 i		Gasolina	RWD	1998	73	99	09.90-03.94	■
2.0		Gasolina	RWD	1998	74	100	09.90-03.94	■
2.0 (C 20 NE)		Gasolina	RWD	1998	85	115	09.86-03.94	■
2.0 i (20 SE)		Gasolina	RWD	1998	90	122	09.86-03.94	■
2.4 i		Gasolina	RWD	2410	92	125	09.88-03.94	■
2.6 i (C 26 NE)		Gasolina	RWD	2594	110	150	09.90-03.94	■
3.0 (C 30 NE)		Gasolina	RWD	2969	130	177	03.87-03.94	■
3.0 24V (C 30 SEJ)		Gasolina	RWD	2969	147	200	09.89-03.94	■
2.3 D (23 YD)		Diesel	RWD	2260	54	73	09.86-03.94	■
2.2 TD (23 YDT)		Diesel	RWD	2260	66	90	09.86-08.88	■
2.3 TD Interc. (23 DTR)		Diesel	RWD	2260	74	100	09.88-03.94	■
<b>CARLTON Mk III (V87) 09.86-03.94</b>					<b>Saloon (Executive car-E Segment)</b>			
1.8 N		Gasolina	RWD	1796	60	82	09.86-08.87	■
1.8 (E 18 NVR)		Gasolina	RWD	1796	65	88	09.87-03.94	■
1.8 S (18 SV)		Gasolina	RWD	1796	66	90	09.86-03.94	■
1.8 i (18 SEH)		Gasolina	RWD	1796	85	115	09.86-03.94	■
2.0		Gasolina	RWD	1998	73	99	09.90-03.94	■
2.0 (C 20 NEF)		Gasolina	RWD	1998	74	100	09.90-03.94	■
2.0 (C 20 NE)		Gasolina	RWD	1998	85	115	09.86-03.94	■
2.0 i (20 SE)		Gasolina	RWD	1998	90	122	09.86-03.94	■
2.4 i		Gasolina	RWD	2410	92	125	09.88-03.94	■
2.6 i (C 26 NE)		Gasolina	RWD	2594	110	150	09.90-03.94	■
3000		Gasolina	RWD	2969	115	156	03.87-12.87	■
3.0 3000 (30 NE)		Gasolina	RWD	2969	130	177	03.87-09.90	■
3000 Cat (C 30 NE)		Gasolina	RWD	2969	130	177	03.88-03.94	■
3000 24V (C 30 SEJ)		Gasolina	RWD	2969	147	200	09.89-03.94	■
3.0 3000 24V (C 30 SE)		Gasolina	RWD	2969	150	204	09.89-03.94	■
3.6 24V Lotus (C 36 GET)		Gasolina	RWD	3638	277	377	08.90-09.92	■

# LISTA DE APLICACIONES - BUYERS GUIDE

2.3 D (23 YD)	Diesel	RWD	2260	54	73	09.86-03.94	■
2.2 TD (23 YDT)	Diesel	RWD	2260	66	90	10.86-08.88	■
2.3 TD Interc. (23 DTR)	Diesel	RWD	2260	74	100	08.88-03.94	■
<b>ROYALE 02.78-08.86</b>				<b>Coupe (Luxury car-F Segment)</b>			
2.8 (28 H)	Gasolina	RWD	2784	103	140	10.79-10.82	■
2.9 (30 E)	Gasolina	RWD	2969	132	180	02.78-08.86	■
3.0 (30 E)	Gasolina	RWD	2969	132	180	10.79-10.82	■
<b>ROYALE 02.78-08.87</b>				<b>Saloon (Luxury car-F Segment)</b>			
2.8 (28 H)	Gasolina	RWD	2784	103	140	02.78-04.81	■
2.9	Gasolina	RWD	2969	110	150	04.78-07.82	■
2.9	Gasolina	RWD	2969	115	156	09.85-08.87	■
2.9 E (30 E)	Gasolina	RWD	2969	132	180	02.78-12.86	■
3.0 (30 E)	Gasolina	RWD	2969	132	180	10.79-10.82	■
<b>SENATOR MK I 02.78-08.87</b>				<b>Saloon (Luxury car-F Segment)</b>			
2.5 i (25 E)	Gasolina	RWD	2490	103	140	09.84-08.87	■
3.0 i (30 E)	Gasolina	RWD	2968	132	180	09.84-12.86	■
<b>SENATOR Mk II (B) (V88) 09.87-09.93</b>				<b>Saloon (Luxury car-F Segment)</b>			
2.5 i (25 E)	Gasolina	RWD	2490	103	140	09.87-10.90	■
2.6 i (C 26 NE)	Gasolina	RWD	2594	110	150	09.90-09.93	■
3.0	Gasolina	RWD	2969	115	156	09.87-09.93	■
3.0 (30 NE)	Gasolina	RWD	2969	130	177	01.88-09.90	■
3.0 (C 30 NE)	Gasolina	RWD	2969	130	177	01.88-09.90	■
3.0 i Cat (30 NE)	Gasolina	RWD	2969	130	177	01.88-09.93	■
3.0 i Cat (C 30 NE)	Gasolina	RWD	2969	130	177	01.88-09.93	■
3.0 (30 NE)	Gasolina	RWD	2969	135	183	09.87-08.88	■
3.0 24V (C 30 SE)	Gasolina	RWD	2969	150	204	09.89-09.93	■