

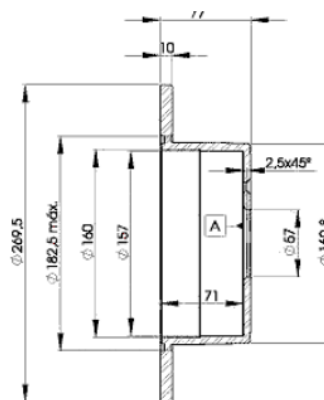
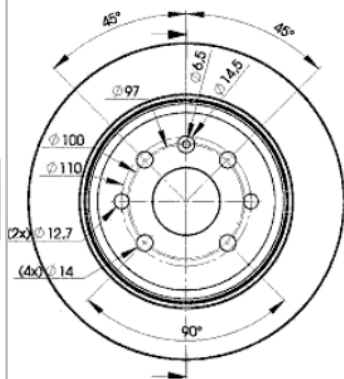
LISTA DE APLICACIONES - BUYERS GUIDE

78BD9102-1



Weight: 4.950

O.E.M.	MAKE
5 69 102	OPEL
90 297 932	VAUXHALL



78BD9102-1

(E1) 90R-02C0241/0032



Ø270x10x77

MAKE
AUDI
OPEL
VAUXHALL



Trac.	CC	Kw	CV		
					Front / Rear

AUDI

200 II C3 (447, 448) 06.83-12.91

Saloon (Executive car-E Segment)

2.2 Turbo quattro (1B)	Gasolina	4WD	2226	147	200	02.88-11.90	■
------------------------	----------	-----	------	-----	-----	-------------	---

OPEL

CALIBRA (C89) 08.89-07.97

Coupe (Sports car-S Segment)

2.0 i (M07) (C 20 NE)	Gasolina	FWD	1998	85	115	08.89-12.96	■
2.0 i 4x4 (M07) (C 20 NE)	Gasolina	4WD	1998	85	115	06.90-07.97	■
2.0 i 16V (M07) (X 20 XEV)	Gasolina	FWD	1998	100	136	02.94-07.97	■
2.0 i 16V 4x4 (M07) (X 20 XEV)	Gasolina	4WD	1998	100	136	02.94-07.97	■
2.0 i 16V (M07) (C 20 XE)	Gasolina	FWD	1998	110	150	06.90-02.94	■
2.0 i 16V 4x4 (M07) (C 20 XE)	Gasolina	4WD	1998	110	150	06.90-02.94	■

VECTRA A (J89) 04.88-12.95

Hatchback (Large family car-D Segment)

2.0 i (F68, M68) (20 NE)		Gasolina	FWD	1998	85	115	09.88-10.90		■
2.0 i Cat (F68, M68) (C 20 NE)	-07/92	Gasolina	FWD	1998	85	116	09.88-11.95		■
2.0 i GT (F68, M68) (20 SEH)		Gasolina	FWD	1998	95	129	09.88-11.95		■
2.0		Gasolina	FWD	1998	110	150	08.89-08.95		■
2.0 i 16V Cat (F68, M68) (C 20 XE)		Gasolina	FWD	1998	110	150	02.90-11.95		■

VECTRA A (J89) 08.88-12.95

Saloon (Large family car-D Segment)

1.8 S 4x4 (F19, M19) (E 18 NVR)	Gasolina	4WD	1796	65	88	01.89-07.89	■
2.0 i (F19, M19) (20 NE)	Gasolina	FWD	1998	85	115	09.88-10.90	■
2.0 i 4x4 (F19, M19) (20 NE)	Gasolina	4WD	1998	85	115	01.89-10.90	■
2.0 i Cat (F19, M19) (C 20 NE)	Gasolina	FWD	1998	85	116	09.88-11.95	■
2.0 i Cat 4x4 (F19, M19) (C 20 NE)	Gasolina	4WD	1998	85	116	01.89-11.95	■

LISTA DE APLICACIONES - BUYERS GUIDE

2.0 i (F19, M19) (20 SEH)		Gasolina	FWD	1998	95	129	09.88-09.92	■
2.0 i 4x4 (F19, M19) (20 SEH)		Gasolina	4WD	1998	95	129	08.89-07.92	■
2000/GT 16V (F19, M19) (20 XEJ)		Gasolina	FWD	1998	110	150	01.89-06.94	■
2000/GT 16V Cat (F19, M19) (C 20 XE)		Gasolina	FWD	1998	110	150	02.90-11.95	■
2000/GT 16V Cat 4x4 (F19, M19) (C 20 XE)		Gasolina	4WD	1998	110	150	02.90-11.95	■
2000 16V 4x4 (F19, M19) (20 XEJ)		Gasolina	4WD	1998	110	150	01.89-10.90	■
VAUXHALL								
CALIBRA (C89) 06.90-07.97					Coupe (Sports car-S Segment)			
2.0 i (C 20 NE)		Gasolina	FWD	1998	85	115	06.90-07.97	■
2.0 i 4x4 (C 20 NE)		Gasolina	4WD	1998	85	115	06.90-07.97	■
2.0 i 16V (X 20 XEV)		Gasolina	FWD	1998	100	136	06.90-07.97	■
2.0 i 16V 4x4 (X 20 XEV)		Gasolina	4WD	1998	100	136	02.94-07.97	■
2.0 i 16V (C 20 XE)		Gasolina	FWD	1998	110	150	06.90-02.94	■
2.0 i 16V 4x4 (C 20 XE)		Gasolina	4WD	1998	110	150	06.90-02.94	■
CAVALIER Mk III (J89) 08.88-11.95					Saloon (Large family car-D Segment)			
2.0 i 16V (C 20 XE)		Gasolina	FWD	1998	110	150	09.88-11.95	■
2.0 i 16V 4x4 (C 20 XE)		Gasolina	4WD	1998	110	150	09.88-11.95	■
2.0 GSi		Gasolina	FWD	1998	115	156	09.89-08.92	■
2.0 GSi 4x4 (20 XE)		Gasolina	4WD	1998	115	156	09.89-08.92	■
2.0 i Turbo 4x4 (C 20 LET)		Gasolina	4WD	1998	150	204	09.92-06.94	■
CAVALIER Mk III CC (J89) 09.88-11.95					Hatchback (Large family car-D Segment)			
2.0 i 4x4 (89) (20 NE)		Gasolina	4WD	1998	85	115	09.91-10.92	■
2.0 i 4x4 (89) (C 20 NE)		Gasolina	4WD	1998	85	115	09.91-10.92	■
2.0 i 4x4		Gasolina	4WD	1998	95	129	09.88-09.92	■
2.0 i 16V (C 20 XE)	09/92-	Gasolina	FWD	1998	110	150	09.88-11.95	■
2.0 i 16V 4x4 (C 20 XE)	09/92-	Gasolina	4WD	1998	110	150	01.92-11.93	■