

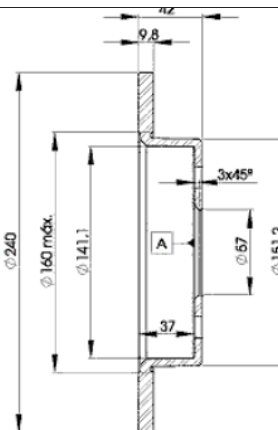
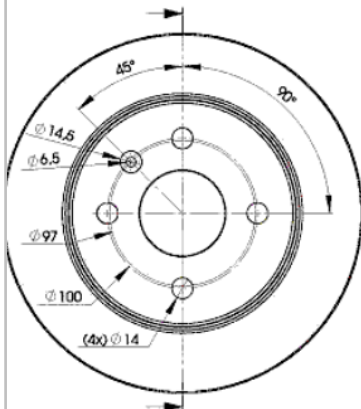
LISTA DE APLICACIONES - BUYERS GUIDE

78BD9108-2



Weight: 6.280

O.E.M.	MAKE
5 069 111	OPEL
5 69 108	OPEL
5 69 111	OPEL
90 498 304	VAUXHALL
91 177 71	VAUXHALL
91 965 87	VAUXHALL



78BD9108-2

E1 90R-02C0415/0035



Ø240x10x42

MAKE
CHEVROLET
OPEL
VAUXHALL



Trac.	CC	Kw	CV
-------	----	----	----



Front / Rear

CHEVROLET

ASTRA 09.94-12.11

					Estate (Compact car-C Segment)			
1.8 GLS		Gasolina	FWD	1796	81	110	08.02-12.11	■
2.0 (X 20 XEV)		Gasolina	FWD	1998	94	128	10.99-07.02	■
2.0 (C 20 SEL)		Gasolina	FWD	1998	100	136	08.02-07.05	■
2.2		Gasolina	FWD	2198	108	147	01.01-12.03	■

ASTRA 09.98-12.11

					Hatchback (Compact car-C Segment)			
1.8 (08, 48) (C 18 NE)		Gasolina	FWD	1796	81	110	09.98-12.11	■
1.8 (08, 48) (C 18 YE)		Gasolina	FWD	1796	81	110	09.98-12.11	■
1.8 (08, 48) (LC5(110CUL4))		Gasolina	FWD	1796	81	110	09.98-12.11	■
2.0 (LE4(122CUL4))		Gasolina	FWD	1998	85	116	08.02-12.11	■
2.0 (X 20 XEV)		Gasolina	FWD	1998	94	128	03.99-07.02	■
2.0 (08, 48) (L34(122CUL4))		Gasolina	FWD	1998	100	136	08.02-07.05	■
2.2 (Z 22 SE)		Gasolina	FWD	2198	108	147	08.00-08.04	■
1.7 Di (Y 17 DT)		Diesel	FWD	1686	55	75	08.00-08.03	■
2.0 DTI (LD1)		Diesel	FWD	1995	74	101	08.02-12.11	■

ASTRA 10.98-12.11

					Saloon (Compact car-C Segment)			
1.8 Flexfuel (C 18 NE)		Gasolina	FWD	1796	81	110	03.99-12.11	■
1.8 Flexfuel (C 18 YE)		Gasolina	FWD	1796	81	110	03.99-12.11	■
1.8 (2H9)		Gasolina	FWD	1796	92	125	08.02-06.05	■
2.0 GL (LE4(122CUL4))		Gasolina	FWD	1998	85	116	08.02-12.11	■
2.0 GLS (X 20 XEV)		Gasolina	FWD	1998	94	128	03.99-07.02	■
2.0 GLS (69) (C 20 SEL)		Gasolina	FWD	1998	100	136	08.02-12.11	■
2.0 GLS (69) (L34(122CUL4))		Gasolina	FWD	1998	100	136	08.02-12.11	■

LISTA DE APLICACIONES - BUYERS GUIDE

2.0 DTi GLS (LD1)		Diesel	FWD	1995	74	101	08.02-12.11	■
CORSA 03.94-12.10					Hatchback (Supermini car-B Segment)			
1.6 GLS (08, 68) (C 16 NE)		Gasolina	FWD	1598	68	92	08.94-07.02	■
1.6 GLS (08, 68) (L01(98CUL4))		Gasolina	FWD	1598	68	92	08.94-07.02	■
CORSA 08.94-12.10					Pickup (Supermini car-B Segment)			
1.6 (80) (C 16 NE)		Gasolina	FWD	1598	68	92	08.94-07.02	■
1.6 (80) (L01(98CUL4))		Gasolina	FWD	1598	68	92	08.94-07.02	■
CORSA 03.94-12.10					Saloon (Supermini car-B Segment)			
1.6 GLS (19) (B 16 NE)		Gasolina	FWD	1598	68	92	08.94-07.02	■
1.6 GLS (19) (L01(98CUL4))		Gasolina	FWD	1598	68	92	08.94-07.02	■
1.6 GS (L91)		Gasolina	FWD	1598	75	102	08.97-07.02	■
1.7 D (2H7)		Diesel	FWD	1686	44	60	08.00-07.02	■
OPEL								
ASTRA G (T98) 03.01-10.05					Convertible (Compact car-C Segment)			
1.6 16V (F67) (Z 16 XE)		Gasolina	FWD	1598	74	101	03.01-10.05	■
ASTRA G (F70) 09.98-04.05					Estate Van (Compact car-C Segment)			
1.2 (F70) (X 12 XE)		Gasolina	FWD	1199	48	65	09.98-08.00	■
1.4 (F70) (X 14 XE)		Gasolina	FWD	1389	66	90	09.98-04.05	■
1.4 (F70) (Z 14 XE)		Gasolina	FWD	1389	66	90	09.98-04.05	■
1.6 (F70) (X 16 SZR)	vehicles with ABS	Gasolina	FWD	1598	55	75	01.99-09.00	■
1.6 (F70) (Z 16 SE)	vehicles with ABS	Gasolina	FWD	1598	62	84	09.00-04.05	■
1.6 (F70) (C 16 SEL)		Gasolina	FWD	1598	74	101	09.98-01.04	■
1.6 (F70) (Z 16 XE)		Gasolina	FWD	1598	74	101	09.98-01.04	■
1.6 (F70) (Z 16 XEP)		Gasolina	FWD	1598	76	103	02.04-11.04	■
1.6 LPG (F70)		Gasol./Gas (LPG)	FWD	1598	55	75	01.99-09.00	■
1.6 LPG (F70)		Gasol./Gas (LPG)	FWD	1598	62	84	12.00-04.05	■
1.7 DTi 16V (F70) (Y 17 DT)		Diesel	FWD	1686	55	75	02.00-04.05	■
1.7 CDTi (F70) (Z 17 DTL)		Diesel	FWD	1686	59	80	07.03-11.04	■
1.7 TD (F70) (X 17 DTL)	vehicles with ABS	Diesel	FWD	1699	50	68	01.99-04.05	■
2.0 DI (F70) (X 20 DTL)	vehicles without ABS	Diesel	FWD	1995	60	82	01.99-04.05	■
2.0 DI (F70) (Y 20 DTL)	vehicles without ABS	Diesel	FWD	1995	60	82	01.99-04.05	■
ASTRA G (T98) 02.98-07.05					Estate (Compact car-C Segment)			
1.2 16V (F35) (X 12 XE)	vehicles with ABS	Gasolina	FWD	1199	48	65	02.98-09.00	■
1.2 16V (F35) (Z 12 XE)	vehicles with ABS	Gasolina	FWD	1199	55	75	09.00-07.04	■
1.4 16V (F35) (X 14 XE)	vehicles with ABS	Gasolina	FWD	1389	66	90	06.98-07.04	■
1.4 16V (F35) (Z 14 XE)	vehicles with ABS	Gasolina	FWD	1389	66	90	06.98-07.04	■
1.6 (F35) (X 16 SZR)	vehicles with ABS	Gasolina	FWD	1598	55	75	02.98-09.00	■
1.6 16V (F35) (X 16 XEL)	-09/00, vehicles with ABS	Gasolina	FWD	1598	74	101	02.98-07.04	■
1.6 16V (F35) (Z 16 XE)	-09/00, vehicles with ABS	Gasolina	FWD	1598	74	101	02.98-07.04	■
1.8 16V (F35) (X 18 XE1)	vehicles without ABS	Gasolina	FWD	1796	85	116	02.98-09.00	■
1.4 LPG (F35) (X 14 XE)		Gasol./Gas (LPG)	FWD	1389	66	90	03.98-07.04	■
1.4 LPG (F35) (Z 14 XE)		Gasol./Gas (LPG)	FWD	1389	66	90	03.98-07.04	■
1.6 LPG (F35)		Gasol./Gas (LPG)	FWD	1598	55	75	03.98-09.00	■
1.6 LPG (F35)		Gasol./Gas (LPG)	FWD	1598	62	84	09.00-07.04	■
1.6 LPG (F35) (X 16 XEL)		Gasol./Gas (LPG)	FWD	1598	74	101	03.98-07.04	■

LISTA DE APLICACIONES - BUYERS GUIDE

1.6 LPG (F35) (Z 16 XE)		Gasol./Gas (LPG)	FWD	1598	74	101	03.98-07.04	■
1.6 LPG (F35) (Z 16 XEP)		Gasol./Gas (LPG)	FWD	1598	76	103	06.02-07.04	■
1.7 DTI 16V (F35) (Y 17 DT)	vehicles with ABS	Diesel	FWD	1686	55	75	02.00-07.04	■
1.7 CDTI (F35) (Z 17 DTL)	vehicles with ABS	Diesel	FWD	1686	59	80	04.03-05.04	■
1.7 TD (F35) (X 17 DTL)	vehicles with ABS	Diesel	FWD	1699	50	68	02.98-08.00	■
2.0 DI (F35) (X 20 DTL)	vehicles without ABS	Diesel	FWD	1995	60	82	02.98-07.04	■
2.0 DI (F35) (Y 20 DTL)	vehicles without ABS	Diesel	FWD	1995	60	82	02.98-07.04	■
2.0 DTI 16V (F35) (Y 20 DTH)	vehicles without ABS	Diesel	FWD	1995	74	101	08.99-07.04	■
ASTRA G (T98) 02.98-12.09					Hatchback (Compact car-C Segment)			
1.2 16V (F08, F48) (X 12 XE)	vehicles with ABS	Gasolina	FWD	1199	48	65	02.98-09.00	■
1.2 16V (F08, F48) (Z 12 XE)	vehicles with ABS	Gasolina	FWD	1199	55	75	09.00-01.05	■
1.4 (F08, F48) (Z 14 XEP)		Gasolina	FWD	1364	66	90	09.07-12.09	■
1.4 16V (F08, F48) (X 14 XE)		Gasolina	FWD	1389	66	90	02.98-01.05	■
1.4 16V (F08, F48) (Z 14 XE)		Gasolina	FWD	1389	66	90	02.98-01.05	■
1.6 (F08, F48) (X 16 SZR)	vehicles with ABS	Gasolina	FWD	1598	55	75	02.98-09.00	■
1.6 (F08, F48) (Z 16 SE)	vehicles with ABS	Gasolina	FWD	1598	62	84	09.00-01.05	■
1.6	vehicles with ABS	Gasolina	FWD	1598	70	95	06.02-03.04	■
1.8 16V (F08, F48) (X 18 XE1)		Gasolina	FWD	1796	85	116	02.98-09.00	■
1.8 16V (F08, F48) (Z 18 XE)	vehicles without ABS	Gasolina	FWD	1796	92	125	09.00-01.05	■
1.4 LPG (F08, F48) (X 14 XE)		Gasol./Gas (LPG)	FWD	1389	66	90	02.98-01.05	■
1.4 LPG (F08, F48) (Z 14 XE)		Gasol./Gas (LPG)	FWD	1389	66	90	02.98-01.05	■
1.6 LPG (F08, F48)		Gasol./Gas (LPG)	FWD	1598	55	75	03.98-01.05	■
1.6 LPG (F48)		Gasol./Gas (LPG)	FWD	1598	62	84	03.98-01.05	■
1.6 LPG (F08, F48) (X 16 XEL)		Gasol./Gas (LPG)	FWD	1598	74	101	03.98-01.05	■
1.6 LPG (F08, F48) (Z 16 XE)		Gasol./Gas (LPG)	FWD	1598	74	101	03.98-01.05	■
1.6 LPG (F08, F48) (Z 16 XEP)		Gasol./Gas (LPG)	FWD	1598	76	103	11.02-06.07	■
1.7 DTI 16V (F08, F48) (Y 17 DT)	vehicles with ABS	Diesel	FWD	1686	55	75	02.00-01.05	■
1.7 CDTI (F08, F48) (Z 17 DTL)	vehicles with ABS	Diesel	FWD	1686	59	80	04.03-01.05	■
1.7 TD (F08, F48) (X 17 DTL)	vehicles with ABS	Diesel	FWD	1699	50	68	02.98-08.00	■
2.0 DI (F08, F48) (X 20 DTL)	vehicles without ABS	Diesel	FWD	1995	60	82	02.98-01.05	■
2.0 DI (F08, F48) (Y 20 DTL)	vehicles without ABS	Diesel	FWD	1995	60	82	02.98-01.05	■
2.0 DTI 16V (F08, F48) (Y 20 DTH)	vehicles without ABS	Diesel	FWD	1995	74	101	08.99-01.05	■
ASTRA G (T98) 03.98-12.09					Saloon (Compact car-C Segment)			
1.2 16V (F69) (X 12 XE)	vehicles with ABS	Gasolina	FWD	1199	48	65	09.98-09.00	■
1.2 16V (F69) (Z 12 XE)	vehicles with ABS	Gasolina	FWD	1199	55	75	09.00-01.05	■
1.4 (F69) (Z 14 XEP)	vehicles with ABS	Gasolina	FWD	1364	66	90	09.07-12.09	■
1.4 16V (F69) (X 14 XE)	vehicles with ABS	Gasolina	FWD	1389	66	90	09.98-01.05	■
1.4 16V (F69) (Z 14 XE)	vehicles with ABS	Gasolina	FWD	1389	66	90	09.98-01.05	■
1.6 (F69) (X 16 SZR)	vehicles with ABS	Gasolina	FWD	1598	55	75	09.98-09.00	■
1.6 (F69) (Z 16 SE)	vehicles with ABS	Gasolina	FWD	1598	62	84	09.00-01.05	■
1.6 16V (F69) (X 16 XEL)	-09/00, vehicles with ABS	Gasolina	FWD	1598	74	101	09.98-01.05	■
1.6 16V (F69) (Z 16 XE)	-09/00, vehicles with ABS	Gasolina	FWD	1598	74	101	09.98-01.05	■
1.8	vehicles without ABS	Gasolina	FWD	1796	81	110	02.03-01.05	■
1.8 16V (F69) (X 18 XE1)	vehicles without ABS	Gasolina	FWD	1796	85	116	09.98-09.00	■
1.8 16V (F69) (Z 18 XE)	vehicles without ABS	Gasolina	FWD	1796	92	125	06.00-01.05	■
1.4 LPG (F69) (X 14 XE)		Gasol./Gas (LPG)	FWD	1389	66	90	03.98-01.05	■

LISTA DE APLICACIONES - BUYERS GUIDE

1.4 LPG (F69) (Z 14 XE)		Gasol./Gas (LPG)	FWD	1389	66	90	03.98-01.05	■
1.6 LPG (F69)		Gasol./Gas (LPG)	FWD	1598	55	75	10.98-06.00	■
1.6 LPG (F69)		Gasol./Gas (LPG)	FWD	1598	62	84	09.00-01.05	■
1.6 LPG (F69) (X 16 XEL)		Gasol./Gas (LPG)	FWD	1598	74	101	06.02-01.05	■
1.6 LPG (F69) (Z 16 XE)		Gasol./Gas (LPG)	FWD	1598	74	101	06.02-01.05	■
1.7 DTI 16V (F69) (Y 17 DT)	vehicles with ABS	Diesel	FWD	1686	55	75	02.00-01.05	■
1.7 CDTI (F69) (Z 17 DTL)	vehicles with ABS	Diesel	FWD	1686	59	80	04.03-12.09	■
1.7 TD (F69) (X 17 DTL)	vehicles with ABS	Diesel	FWD	1699	50	68	09.98-08.00	■
2.0 DI (F69) (X 20 DTL)	vehicles without ABS	Diesel	FWD	1995	60	82	09.98-01.05	■
2.0 DI (F69) (Y 20 DTL)	vehicles without ABS	Diesel	FWD	1995	60	82	09.98-01.05	■
2.0 DTI 16V (F69) (Y 20 DTH)	vehicles without ABS	Diesel	FWD	1995	74	101	08.99-01.05	■
ASTRA G CLASSIC (T98) 03.04-07.09					Hatchback (Compact car-C Segment)			
1.4 16V (F08, F48) (Z 14 XE)		Gasolina	FWD	1389	66	90	05.04-07.09	■
1.6 16V (F08, F48) (Z 16 XE)		Gasolina	FWD	1598	74	101	05.04-02.06	■
1.6 (F08, F48) (Z 16 XEP)		Gasolina	FWD	1598	76	103	03.06-06.08	■
1.7 CDTI (F08, F48) (Z 17 DTL)		Diesel	FWD	1686	59	80	06.04-07.09	■
ASTRA G CLASSIC (T98) 03.04-07.09					Saloon (Compact car-C Segment)			
1.4 16V (F69) (Z 14 XE)		Gasolina	FWD	1389	66	90	05.04-07.09	■
1.6 16V (F69) (Z 16 XE)		Gasolina	FWD	1598	74	101	03.04-01.08	■
ASTRA G CLASSIC Caravan (F35) 03.04-07.09					Estate (Compact car-C Segment)			
1.4 (F35) (Z 14 XEP)	vehicles with ABS	Gasolina	FWD	1364	66	90	10.07-07.09	■
1.4 16V (Z 14 XE)		Gasolina	FWD	1389	66	90	07.04-09.07	■
1.6 (Z 16 XE)		Gasolina	FWD	1598	74	101	06.04-02.06	■
1.6 (Z 16 XEP)		Gasolina	FWD	1598	76	103	02.06-07.09	■
1.7 CDTi (Z 17 DTL)		Diesel	FWD	1686	59	80	05.04-07.09	■
ASTRA H (L70) 02.04-10.14					Estate Van (Compact car-C Segment)			
1.4 EcoTec (L70) (Z 14 XEP)		Gasolina	FWD	1364	66	90	12.04-12.12	■
1.6 EcoTec (L70) (Z 16 XEP)		Gasolina	FWD	1598	76	103	02.04-11.04	■
1.6 EcoTec (L70) (Z 16 XER)		Gasolina	FWD	1598	85	116	10.06-12.10	■
1.3 CDTI (L70) (Z 13 DTH)		Diesel	FWD	1248	66	90	08.05-10.10	■
1.7 CDTI (L70) (Z 17 DTL)		Diesel	FWD	1686	59	80	12.04-07.07	■
1.7 CDTI (L70) (Z 17 DTH)		Diesel	FWD	1686	74	101	03.04-10.10	■
1.7 CDTI (L70) (A 17 DTJ)		Diesel	FWD	1686	81	110	02.07-10.14	■
1.7 CDTI (L70) (Z 17 DTJ)		Diesel	FWD	1686	81	110	02.07-10.14	■
1.7 CDTI (L70) (A 17 DTR)		Diesel	FWD	1686	92	125	02.07-10.10	■
1.7 CDTI (L70) (Z 17 DTR)		Diesel	FWD	1686	92	125	02.07-10.10	■
1.9 CDTI (L70) (Z 19 DTL)		Diesel	FWD	1910	74	101	08.05-12.12	■
1.9 CDTI (L70) (Z 19 DT)		Diesel	FWD	1910	88	120	09.05-10.10	■
1.9 CDTI 16V (L70) (Z 19 DTJ)		Diesel	FWD	1910	88	120	08.04-10.10	■
1.9 CDTI (L70) (Z 19 DTH)		Diesel	FWD	1910	110	150	09.04-10.10	■
ASTRA H (A04) 08.04-05.14					Estate (Compact car-C Segment)			
1.4 (L35) (Z 14 XEL)		Gasolina	FWD	1364	55	75	08.04-10.10	■
1.4 (L35) (Z 14 XEP)		Gasolina	FWD	1364	66	90	08.04-10.10	■
1.6 CNG		Gasolina	FWD	1598	69	94	11.05-	■
1.6 (L35) (Z 16 XE1)		Gasolina	FWD	1598	77	105	08.04-10.10	■
1.6 (L35) (Z 16 XEP)		Gasolina	FWD	1598	77	105	08.04-10.10	■

LISTA DE APLICACIONES - BUYERS GUIDE

1.4 LPG (L35) (Z 14 XEP)		Gasol./Gas (LPG)	FWD	1364	66	90	08.09-10.10	■
1.6 LPG (L35) (Z 16 XER)		Gasol./Gas (LPG)	FWD	1598	85	116	08.09-10.10	■
ASTRA H (A04) 01.04-05.14					Hatchback (Compact car-C Segment)			
1.2		Gasolina	FWD	1199	48	65	10.06-	■
1.2 (L48) (Z 12 XEP)		Gasolina	FWD	1229	59	80	08.05-10.10	■
1.4 (L48) (Z 14 XEL)		Gasolina	FWD	1364	55	75	04.04-10.04	■
1.4		Gasolina	FWD	1364	59	80	04.04-10.04	■
1.4 (L48) (Z 14 XEP)		Gasolina	FWD	1364	66	90	03.04-10.10	■
1.6 CNG		Gasolina	FWD	1598	69	94	11.05-	■
1.6 (L48) (Z 16 XE1)		Gasolina	FWD	1598	77	105	03.04-10.10	■
1.6 (L48) (Z 16 XEP)		Gasolina	FWD	1598	77	105	03.04-10.10	■
1.6 (L48) (A 16 XER)		Gasolina	FWD	1598	85	116	12.06-05.14	■
1.6 (L48) (Z 16 XER)		Gasolina	FWD	1598	85	116	12.06-05.14	■
1.4 LPG (L48) (Z 14 XEP)		Gasol./Gas (LPG)	FWD	1364	66	90	08.09-10.10	■
ASTRA H (A04) 02.07-05.14					Saloon (Compact car-C Segment)			
1.4 (L69) (Z 14 XEP)		Gasolina	FWD	1364	66	90	02.07-06.10	■
1.6 (L69) (Z 16 XEP)		Gasolina	FWD	1598	77	105	02.07-06.10	■
1.8 (L69) (A 18 XER)		Gasolina	FWD	1796	103	140	02.07-09.12	■
1.8 (L69) (Z 18 XER)		Gasolina	FWD	1796	103	140	02.07-09.12	■
1.3 CDTi (L69) (Z 13 DTH)		Diesel	FWD	1248	66	90	02.07-10.10	■
1.7 CDTi (L69) (Z 17 DTJ)		Diesel	FWD	1686	81	110	02.07-05.14	■
ASTRA H CLASSIC (A04) 12.06-					Estate (Compact car-C Segment)			
1.4 (L35) (Z 14 XEP)		Gasolina	FWD	1364	66	90	01.09-	■
1.6 (L35) (Z 16 XER)		Gasolina	FWD	1598	85	116	12.06-05.14	■
1.8 (L35) (Z 18 XER)		Gasolina	FWD	1796	103	140	01.12-05.14	■
1.7 CDTi (L35) (Z 17 DTJ)		Diesel	FWD	1686	81	110	01.09-	■
ASTRA H CLASSIC (A04) 01.09-					Hatchback (Compact car-C Segment)			
1.4 (L48) (Z 14 XEP)		Gasolina	FWD	1364	66	90	01.09-	■
1.6 (L48) (Z 16 XER)		Gasolina	FWD	1598	85	116	01.09-	■
1.7 CDTi (L48) (A 17 DTJ)		Diesel	FWD	1686	81	110	01.09-	■
1.7 CDTi (L48) (Z 17 DTJ)		Diesel	FWD	1686	81	110	01.09-	■
ASTRA H CLASSIC (A04) 02.07-					Saloon (Compact car-C Segment)			
1.6 (L69) (Z 16 XER)		Gasolina	FWD	1598	85	116	01.09-05.14	■
1.8 (L69) (Z 18 XER)		Gasolina	FWD	1796	103	140	02.07-09.12	■
1.7 CDTi (L69) (Z 17 DTJ)		Diesel	FWD	1686	81	110	01.09-	■
1.7 CDTi (L69) (A 17 DTR)		Diesel	FWD	1686	92	125	01.09-	■
1.7 CDTi (L69) (Z 17 DTR)		Diesel	FWD	1686	92	125	01.09-	■
ASTRA H GTC (A04) 03.05-10.10					Hatchback (Compact car-C Segment)			
1.2		Gasolina	FWD	1199	48	65	10.06-	■
1.2 (L08)		Gasolina	FWD	1229	59	80	08.05-10.10	■
1.4 (L08) (Z 14 XEL)		Gasolina	FWD	1364	55	75	03.05-10.10	■
1.4 (L08) (Z 14 XEP)		Gasolina	FWD	1364	66	90	03.05-10.10	■
1.6 CNG		Gasolina	FWD	1598	69	94	11.05-	■
1.6 (L08) (Z 16 XE1)		Gasolina	FWD	1598	77	105	03.05-10.10	■
1.6 (L08) (Z 16 XEP)		Gasolina	FWD	1598	77	105	03.05-10.10	■
1.6 (L08) (Z 16 XER)		Gasolina	FWD	1598	85	116	12.06-10.10	■
1.6 Turbo (L08) (A 16 LET)		Gasolina	FWD	1598	132	180	02.07-10.10	■

LISTA DE APLICACIONES - BUYERS GUIDE

1.6 Turbo (L08) (Z 16 LET)		Gasolina	FWD	1598	132	180	02.07-10.10	■
1.7 CDTi (L08) (Z 17 DTL)		Diesel	FWD	1686	59	80	03.05-10.10	■
ASTRA H TwinTop (A04) 09.05-10.10					Convertible (Compact car-C Segment)			
1.6 (L67) (Z 16 XE1)		Gasolina	FWD	1598	77	105	09.05-10.10	■
1.6 (L67) (Z 16 XEP)		Gasolina	FWD	1598	77	105	09.05-10.10	■
1.6 (L67) (Z 16 XER)		Gasolina	FWD	1598	85	116	12.06-10.10	■
MERIVA A (X03) 05.03-05.10					MPV (Mini MPV-M1 Segment)			
1.4 16V Twinport (E75) (Z 14 XEP)		Gasolina	FWD	1364	66	90	07.04-05.10	■
1.6 (E75) (Z 16 SE)		Gasolina	FWD	1598	64	87	05.03-05.10	■
1.4 16V Twinport LPG (E75) (Z 14 XEP)		Gasol./G as (LPG)	FWD	1364	66	90	07.04-05.10	■
VAUXHALL								
ASTRA Mk IV (G) (T98) 03.01-10.05					Convertible (Compact car-C Segment)			
1.6 16V (Z 16 XEP)		Gasolina	FWD	1598	76	103	03.03-10.05	■
ASTRA Mk IV (G) (T98) 02.98-05.05					Estate (Compact car-C Segment)			
1.2 16V	vehicles with ABS	Gasolina	FWD	1199	48	65	02.98-09.00	■
1.2 16V	vehicles with ABS	Gasolina	FWD	1199	55	75	09.00-05.05	■
1.4 16V (X 14 XE)	-09/00, vehicles with ABS	Gasolina	FWD	1389	66	90	02.98-05.05	■
1.4 16V (Z 14 XE)	-09/00, vehicles with ABS	Gasolina	FWD	1389	66	90	02.98-05.05	■
1.6 (X 16 SZR)	vehicles with ABS	Gasolina	FWD	1598	55	75	03.98-04.04	■
1.6 16V (X 16 XEL)	-09/00, vehicles with ABS	Gasolina	FWD	1598	74	101	03.98-04.04	■
1.6 16V (Z 16 XE)	-09/00, vehicles with ABS	Gasolina	FWD	1598	74	101	03.98-04.04	■
1.6 (Z 16 XEP)		Gasolina	FWD	1598	76	103	12.02-05.05	■
1.8 16V (X 18 XE1)	vehicles without ABS	Gasolina	FWD	1796	85	116	02.98-08.00	■
1.8 16V (Z 18 XE)	vehicles without ABS	Gasolina	FWD	1796	92	125	09.00-05.05	■
1.4 16V Dualfuel (X 14 XE)		Gasol./G as (LPG)	FWD	1389	66	90	09.99-06.03	■
1.4 16V Dualfuel (Z 14 XE)		Gasol./G as (LPG)	FWD	1389	66	90	09.99-06.03	■
1.6 Dualfuel (X 16 SZR)		Gasol./G as (LPG)	FWD	1598	55	75	02.98-12.00	■
1.6 Dualfuel (Z 16 SE)		Gasol./G as (LPG)	FWD	1598	62	86	07.00-05.05	■
1.6 Dualfuel (X 16 XEL)		Gasol./G as (LPG)	FWD	1598	74	101	09.99-08.04	■
1.6 Dualfuel (Z 16 XE)		Gasol./G as (LPG)	FWD	1598	74	101	09.99-08.04	■
1.8 16V Dualfuel (Z 18 XE)	vehicles without ABS	Gasol./G as (LPG)	FWD	1796	87	118	09.02-05.05	■
1.7 DTI 16V (Y 17 DT)	vehicles with ABS	Diesel	FWD	1686	55	75	02.00-05.05	■
1.7 CDTI 16V (Z 17 DTL)	vehicles with ABS	Diesel	FWD	1686	59	80	04.03-05.05	■
1.7 TD (X 17 DTL)	vehicles with ABS	Diesel	FWD	1700	50	68	02.98-08.00	■
2.0 DI (X 20 DTL)	vehicles without ABS	Diesel	FWD	1995	60	82	03.98-04.04	■
2.0 DI (Y 20 DTL)	vehicles without ABS	Diesel	FWD	1995	60	82	03.98-04.04	■
2.0 DTI 16V (Y 20 DTH)	vehicles without ABS	Diesel	FWD	1995	74	101	03.98-04.04	■
ASTRA Mk IV (G) (T98) 02.98-05.05					Hatchback (Compact car-C Segment)			
1.2 16V (F08, F48)	vehicles with ABS	Gasolina	FWD	1199	48	65	02.98-09.00	■
1.2 16V (F08, F48)	vehicles with ABS	Gasolina	FWD	1199	55	75	09.00-05.05	■
1.4 16V (F08, F48) (X 14 XE)	vehicles with ABS	Gasolina	FWD	1389	66	90	02.98-05.05	■
1.4 16V (F08, F48) (Z 14 XE)	vehicles with ABS	Gasolina	FWD	1389	66	90	02.98-05.05	■
1.6 (F08, F48) (X 16 SZR)	vehicles with ABS	Gasolina	FWD	1598	55	75	02.98-09.00	■
1.6 (F08, F48) (Z 16 SE)	vehicles with ABS	Gasolina	FWD	1598	62	84	09.00-05.05	■
1.6 16V (F08, F48) (X 16 XEL)	-09/00, vehicles with ABS	Gasolina	FWD	1598	74	101	02.98-05.05	■

LISTA DE APLICACIONES - BUYERS GUIDE

1.6 16V (F08, F48) (Z 16 XE)	-09/00, vehicles with ABS	Gasolina	FWD	1598	74	101	02.98-05.05	■
1.6 (F08, F48) (Z 16 XEP)		Gasolina	FWD	1598	76	103	12.02-05.05	■
1.8 16V (F08, F48) (X 18 XE1)	vehicles without ABS	Gasolina	FWD	1796	85	116	02.98-09.00	■
1.8 16V (F08, F48) (Z 18 XE)	vehicles without ABS	Gasolina	FWD	1796	92	125	09.00-05.05	■
1.4 16V Dualfuel (F08, F48) (X 14 XE)		Gasol./G as (LPG)	FWD	1389	66	90	09.99-06.03	■
1.4 16V Dualfuel (F08, F48) (Z 14 XE)		Gasol./G as (LPG)	FWD	1389	66	90	09.99-06.03	■
1.6 Dualfuel (F08, F48) (X 16 SZR)		Gasol./G as (LPG)	FWD	1598	55	75	02.98-12.00	■
1.6 Dualfuel (F08) (Z 16 SE)		Gasol./G as (LPG)	FWD	1598	62	86	07.00-05.05	■
1.6 Dualfuel (F08, F48) (Z 16 SE)	vehicles with ABS	Gasol./G as (LPG)	FWD	1598	63	85	09.02-05.05	■
1.6 Dualfuel (F08, F48) (X 16 XEL)		Gasol./G as (LPG)	FWD	1598	74	101	09.99-08.04	■
1.6 Dualfuel (F08, F48) (Z 16 XE)		Gasol./G as (LPG)	FWD	1598	74	101	09.99-08.04	■
1.8 16V Dualfuel (F08, F48) (Z 18 XE)	vehicles without ABS	Gasol./G as (LPG)	FWD	1796	87	118	09.02-05.05	■
2.0 DI (F48) (X 20 DTL)	vehicles without ABS	Diesel	FWD	1995	60	82	02.98-05.05	■
2.0 DI (F48) (Y 20 DTL)	vehicles without ABS	Diesel	FWD	1995	60	82	02.98-05.05	■
2.0 DTI 16V (F48) (Y 20 DTH)	vehicles without ABS	Diesel	FWD	1995	74	101	08.99-05.05	■
ASTRA Mk IV (G) (T98) 02.98-05.05					Saloon (Compact car-C Segment)			
1.2 16V	vehicles with ABS	Gasolina	FWD	1199	48	65	09.98-09.00	■
1.2 16V	vehicles with ABS	Gasolina	FWD	1199	55	75	09.00-05.05	■
1.4 16V (X 14 XE)		Gasolina	FWD	1389	66	90	09.98-05.05	■
1.4 16V (Z 14 XE)		Gasolina	FWD	1389	66	90	09.98-05.05	■
1.6 (X 16 SZR)	vehicles with ABS	Gasolina	FWD	1598	55	75	09.98-09.00	■
1.6 (Z 16 SE)	vehicles with ABS	Gasolina	FWD	1598	62	84	09.00-05.05	■
1.6 16V (X 16 XEL)	-09/00, vehicles with ABS	Gasolina	FWD	1598	74	101	09.98-05.05	■
1.6 16V (Z 16 XE)	-09/00, vehicles with ABS	Gasolina	FWD	1598	74	101	09.98-05.05	■
1.8 16V (X 18 XE1)	vehicles without ABS	Gasolina	FWD	1796	85	116	02.98-07.04	■
1.8 16V (Z 18 XE)	vehicles without ABS	Gasolina	FWD	1796	92	125	02.98-07.04	■
1.6 Dualfuel		Gasol./G as (LPG)	FWD	1598	55	75	02.98-12.00	■
1.6 Dualfuel (Z 16 SE)		Gasol./G as (LPG)	FWD	1598	62	86	07.00-05.05	■
1.6 Dualfuel (Z 16 SE)	vehicles with ABS	Gasol./G as (LPG)	FWD	1598	63	85	09.02-05.05	■
1.6 Dualfuel (X 16 XEL)		Gasol./G as (LPG)	FWD	1598	74	101	09.99-08.04	■
1.6 Dualfuel (Z 16 XE)		Gasol./G as (LPG)	FWD	1598	74	101	09.99-08.04	■
1.8 16V Dualfuel (Z 18 XE)	vehicles without ABS	Gasol./G as (LPG)	FWD	1796	87	118	02.98-07.04	■
2.0 DI (X 20 DTL)	vehicles without ABS	Diesel	FWD	1995	60	82	02.98-07.04	■
2.0 DI (Y 20 DTL)	vehicles without ABS	Diesel	FWD	1995	60	82	02.98-07.04	■
2.0 DTI 16V (Y 20 DTH)	vehicles without ABS	Diesel	FWD	1995	74	101	02.98-07.04	■
ASTRA Mk V (H) (A04) 08.04-10.12					Estate (Compact car-C Segment)			
1.4 (L35) (Z 14 XEP)		Gasolina	FWD	1364	66	90	08.04-03.09	■
1.6 (L35) (Z 16 XE1)		Gasolina	FWD	1598	77	105	08.04-03.09	■
1.6 (L35) (Z 16 XEP)		Gasolina	FWD	1598	77	105	08.04-03.09	■
1.6 (L35) (Z 16 XER)		Gasolina	FWD	1598	85	115	08.04-03.11	■
1.7 CDTI (L35) (Z 17 DTL)		Diesel	FWD	1686	59	80	08.04-05.09	■
1.9 CDTI 16V (L35) (Z 19 DTJ)		Diesel	FWD	1910	88	120	08.04-03.09	■
ASTRA Mk V (H) (A04) 01.04-03.11					Hatchback (Compact car-C Segment)			
1.4 (L48) (Z 14 XEP)		Gasolina	FWD	1364	66	90	01.04-05.09	■

LISTA DE APLICACIONES - BUYERS GUIDE

1.6 (L48) (Z 16 XE1)		Gasolina	FWD	1598	77	105	01.04-05.09	■
1.6 (L48) (Z 16 XEP)		Gasolina	FWD	1598	77	105	01.04-05.09	■
1.6 (L48) (A 16 XER)		Gasolina	FWD	1598	85	115	01.04-05.09	■
1.6 (L48) (Z 16 XER)		Gasolina	FWD	1598	85	115	01.04-05.09	■
1.6 Turbo (L48) (A 16 LET)		Gasolina	FWD	1598	132	180	09.06-09.09	■
1.6 Turbo (L48) (Z 16 LET)		Gasolina	FWD	1598	132	180	09.06-09.09	■
ASTRA Mk V (H) Sport Hatch (A04) 02.05-11.10					Hatchback (Compact car-C Segment)			
1.4 i 16V (L08) (Z 14 XEP)		Gasolina	FWD	1364	66	90	03.05-11.10	■
1.6 (L08) (Z 16 XEP)		Gasolina	FWD	1598	77	105	02.05-11.10	■
1.6 i 16V (L08) (A 16 XER)		Gasolina	FWD	1598	85	116	12.06-11.10	■
1.6 i 16V (L08) (Z 16 XER)		Gasolina	FWD	1598	85	116	12.06-11.10	■
1.6 (L08) (A 16 LET)		Gasolina	FWD	1598	132	179	10.06-11.10	■
1.6 (L08) (Z 16 LET)		Gasolina	FWD	1598	132	179	10.06-11.10	■
1.7 CDTi (L08) (A 17 DTJ)		Diesel	FWD	1686	81	110	02.07-11.09	■
1.7 CDTi (L08) (Z 17 DTJ)		Diesel	FWD	1686	81	110	02.07-11.09	■
ASTRAVAN Mk IV (G) (T98) 01.93-08.06					Estate Van (Compact car-C Segment)			
1.4 16V (Z 14 XE)		Gasolina	FWD	1389	66	90	09.00-05.05	■
1.6 i (X 16 SZR)	vehicles with ABS	Gasolina	FWD	1598	55	75	08.98-09.00	■
1.6 i (Z 16 SE)	vehicles with ABS	Gasolina	FWD	1598	62	84	09.00-08.06	■
1.6 Dualfuel (X 16 SZR)		Gasol./G as (LPG)	FWD	1598	55	75	02.98-12.00	■
1.6 Dualfuel (Z 16 XE)	vehicles with ABS	Gasol./G as (LPG)	FWD	1598	74	101	07.00-08.05	■
1.6 Dualfuel 16V (Z 16 XEP)		Gasol./G as (LPG)	FWD	1598	77	105	10.04-12.05	■
1.7 DTI 16V (Y 17 DT)		Diesel	FWD	1686	55	75	04.01-08.06	■
1.7 TD (X 17 DTL)		Diesel	FWD	1700	50	68	08.98-08.06	■
ASTRAVAN Mk V (H) (A04) 03.05-					Estate Van (Compact car-C Segment)			
1.4 i (Z 14 XEP)		Gasolina	FWD	1364	66	90	03.05-	■
1.6 (Z 16 XE1)		Gasolina	FWD	1598	76	103	03.05-	■
1.6 (Z 16 XEP)		Gasolina	FWD	1598	76	103	03.05-	■
1.3 CDTi (Z 13 DTH)		Diesel	FWD	1248	66	90	08.05-	■
1.7 CDTi (Z 17 DTL)		Diesel	FWD	1686	59	80	03.05-07.06	■
1.7 CDTi (A 17 DTJ)		Diesel	FWD	1686	81	110	06.11-12.13	■
1.7 CDTi (Z 17 DTJ)		Diesel	FWD	1686	81	110	06.11-12.13	■
1.9 CDTi (Z 19 DT)		Diesel	FWD	1910	88	120	03.05-11.11	■
1.9 CDTi (Z 19 DTH)		Diesel	FWD	1910	110	150	03.05-11.11	■
COMBO Mk II (C) (F25) 09.01-02.12					Box Body/MPV (LCVs-N1 Segment)			
1.4 16V (Z 14 XE)		Gasolina	FWD	1389	66	90	10.01-05.07	■
1.6 (Z 16 SE)		Gasolina	FWD	1598	62	84	09.01-10.04	■
1.6 CNG 16V (Y 16 YNG)		Gasol./G as (CNG)	FWD	1598	69	94	06.06-02.12	■
1.6 CNG 16V (Z 16 YNG)		Gasol./G as (CNG)	FWD	1598	69	94	06.06-02.12	■
1.6 CNG 16V (Z 16 YNG)		Gasol./G as (CNG)	FWD	1598	71	97	04.05-02.12	■
1.3 CDTi 16V (Y 13 DT)		Diesel	FWD	1248	51	69	09.04-02.12	■
1.3 CDTi 16V (Z 13 DT)		Diesel	FWD	1248	51	69	09.04-02.12	■
1.3 CDTi 16V (Z 13 DTJ)		Diesel	FWD	1248	55	75	10.05-11.11	■

LISTA DE APLICACIONES - BUYERS GUIDE

COMBO TOUR Mk II (C) (F25) 09.01-02.12					MPV (Large MPV-M1 Segment)			
1.4 (Z 14 XEP)	Gasolina	FWD	1364	66	90	10.04-09.10	■	
1.6 (Z 16 SE)	Gasolina	FWD	1598	64	87	10.01-06.04	■	
1.6 CNG (Z 16 YNG)	Gasol./Gas (CNG)	FWD	1598	69	94	06.06-09.10	■	
1.6 CNG (Z 16 YNG)	Gasol./Gas (CNG)	FWD	1598	71	97	04.05-02.12	■	
1.3 CDTI 16V (Z 13 DT)	Diesel	FWD	1248	51	69	09.04-09.06	■	
1.3 CDTI 16V (Z 13 DTJ)	Diesel	FWD	1248	55	75	07.06-02.12	■	
1.7 DI 16V (Y 17 DTL)	Diesel	FWD	1686	48	65	09.01-06.04	■	
1.7 DTI 16V (Y 17 DT)	Diesel	FWD	1686	55	75	10.01-02.12	■	
MERIVA Mk I (A) (X03) 01.03-06.10					MPV (Mini MPV-M1 Segment)			
1.4 16V Twinport (Z 14 XEP)	Gasolina	FWD	1364	66	90	01.03-06.10	■	
1.6 i (Z 16 SE)	Gasolina	FWD	1598	64	87	01.03-06.10	■	