

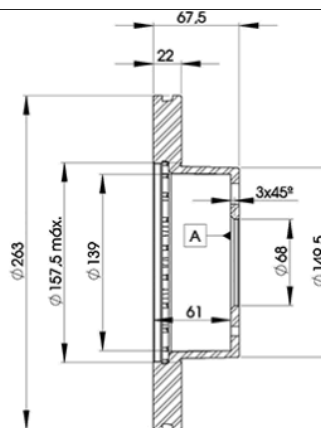
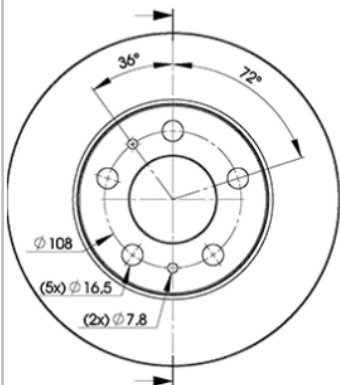
LISTA DE APLICACIONES - BUYERS GUIDE

78BD9131-2



Weight: 11.130

O.E.M.	MAKE
1 228 153	VOLVO
1 359 131 8	VOLVO
2 707 396	VOLVO



78BD9131-2

E1 90R-02C0074/1354



Ø263x22x67.5

MAKE
MITSUBISHI
VOLVO



Trac.	CC	Kw	CV		
					Front / Rear

MITSUBISHI

LANCER CARGO IV (CS_W) 09.03-06.08

Estate Van (Compact car-C Segment)

2.0 (CS9W)	Gasolina	FWD	1997	99	135	09.03-06.08	■
------------	----------	-----	------	----	-----	-------------	---

VOLVO

240 (P242, P244) 08.74-12.93

Saloon (Executive car-E Segment)

2.0 (B 20 A)	Gasolina	RWD	1986	60	82	08.74-07.76	■
2.0	Gasolina	RWD	1986	60	82	09.74-12.75	■
2.0 (B 19 A)	Gasolina	RWD	1986	66	90	08.76-07.79	■
2.0 (B 19 A)	Gasolina	RWD	1986	71	97	09.78-08.83	■
2.0 (B 19 K)	Gasolina	RWD	1986	71	97	09.78-08.83	■
2.0 (B 19 E)	Gasolina	RWD	1986	74	101	08.84-08.89	■
2.0 (B 200 K)	Gasolina	RWD	1986	76	103	08.84-07.85	■
2.0 (B 19 E)	Gasolina	RWD	1986	82	111	01.90-12.93	■
2.0 (B 200 F)	Gasolina	RWD	1986	82	111	01.90-12.93	■
2.0 (B 200 E)	Gasolina	RWD	1986	89	121	09.84-12.93	■
2.0 (B 19 ET)	Gasolina	RWD	1986	100	136	10.82-08.84	■
2.1 (B 21 A)	Gasolina	RWD	2127	71	97	08.74-07.75	■
2.1 (B 21 A)	Gasolina	RWD	2127	74	100	08.75-07.80	■
2.1 (B 21 A)	Gasolina	RWD	2127	78	106	01.83-12.84	■
2.1 (B 21 A)	Gasolina	RWD	2127	79	107	08.80-07.84	■
2.1 (B 21 E)	Gasolina	RWD	2127	90	122	08.74-09.83	■
2.1 Turbo (B 21 ET)	Gasolina	RWD	2127	114	155	08.80-07.84	■
2.3 (B 230 F)	Gasolina	RWD	2315	83	113	08.86-07.87	■
2.3 (B 230 A)	Gasolina	RWD	2316	81	110	08.84-07.86	■

LISTA DE APLICACIONES - BUYERS GUIDE

2.3 (B 23 A)		Gasolina	RWD	2316	82	112	08.80-07.84	■
2.3 (B 230 K)		Gasolina	RWD	2316	85	115	08.86-12.88	■
2.3 i Cat (B 230 F)		Gasolina	RWD	2316	85	115	08.86-07.93	■
2.3 (B 230 E)		Gasolina	RWD	2316	96	131	08.83-07.85	■
2.3 (B 23 E)		Gasolina	RWD	2316	98	133	08.84-12.89	■
2.3 (B 23 E)		Gasolina	RWD	2316	100	136	08.80-07.83	■
2.3 (B 23 F)		Gasolina	RWD	2316	100	136	08.80-07.83	■
2.3 (B 23 E)		Gasolina	RWD	2316	103	140	08.78-12.82	■
2.7 GLT6 (B 27 E)		Gasolina	RWD	2664	104	141	08.79-07.80	■
2.8 (B 28 E)		Gasolina	RWD	2849	114	155	10.82-09.84	■
2.4 Diesel (D 24)		Diesel	RWD	2383	58	79	08.87-08.93	■
2.4 Diesel (D 24)		Diesel	RWD	2383	60	82	08.78-07.85	■
240 Kombi (P245) 08.74-12.93					Estate (Executive car-E Segment)			
2.0 (B 20 A)		Gasolina	RWD	1986	60	82	08.74-07.75	■
2.0 (B 19 A)		Gasolina	RWD	1986	66	90	08.76-01.82	■
2.0 (B 19 A)		Gasolina	RWD	1986	71	97	08.80-12.84	■
2.0 (B 19 K)		Gasolina	RWD	1986	71	97	08.80-12.84	■
2.0 (B 200 K)		Gasolina	RWD	1986	76	103	08.84-07.85	■
2.0 (B 200 F)		Gasolina	RWD	1986	82	111	09.88-12.93	■
2.0 (B 200 E)		Gasolina	RWD	1986	86	117	08.83-07.93	■
2.0 (B 19 ET)		Gasolina	RWD	1986	100	136	10.82-08.84	■
2.1 (B 21 A)		Gasolina	RWD	2127	71	97	08.74-07.75	■
2.1 (B 21 A)		Gasolina	RWD	2127	74	100	08.75-07.80	■
2.1 (B 21 A)		Gasolina	RWD	2127	79	107	08.80-07.84	■
2.1 (B 21 F)		Gasolina	RWD	2127	80	109	08.80-07.84	■
2.1 (B 21 E)		Gasolina	RWD	2127	90	122	08.74-09.83	■
2.1 Turbo (B 21 ET)		Gasolina	RWD	2127	114	155	08.80-07.85	■
2.3 (B 230 A)		Gasolina	RWD	2316	81	110	08.84-07.86	■
2.3 (B 23 A)		Gasolina	RWD	2316	82	112	08.80-07.84	■
2.3 (B 230 F)		Gasolina	RWD	2316	83	113	08.86-07.87	■
2.3 (B 230 K)		Gasolina	RWD	2316	85	115	08.86-12.88	■
2.3 i Cat (B 230 F)		Gasolina	RWD	2316	85	115	08.86-07.93	■
2.3 (B 230 E)		Gasolina	RWD	2316	96	131	08.84-07.85	■
2.3 (B 23 E)		Gasolina	RWD	2316	98	133	08.84-12.88	■
2.3 (B 23 E)		Gasolina	RWD	2316	100	136	08.80-12.84	■
2.3 Cat (B 230 F)		Gasolina	RWD	2316	100	136	08.91-07.92	■
2.7 GLT6 (B 27 E)		Gasolina	RWD	2664	104	141	08.79-07.80	■
2.8 (B 28 A)		Gasolina	RWD	2849	95	129	10.81-09.82	■
2.8 (B 28 E)		Gasolina	RWD	2849	114	155	10.80-09.82	■
2.0 D (D 20)		Diesel	RWD	1985	50	68	09.78-10.80	■
2.4 Diesel (D 24)		Diesel	RWD	2383	58	79	08.88-08.93	■
2.4 Diesel (D 24)		Diesel	RWD	2383	60	82	04.79-08.93	■
260 (P262) 09.75-12.85					Coupe (Executive car-E Segment)			
2.7 (B 27 E)		Gasolina	RWD	2664	103	140	08.77-07.78	■
2.8 (B 28 F)		Gasolina	RWD	2849	114	155	09.79-12.81	■
260 (P265) 07.75-07.82					Estate (Executive car-E Segment)			
2.7 (B 27 A)		Gasolina	RWD	2664	92	125	08.75-07.77	■
2.7 (B 27 E)		Gasolina	RWD	2664	103	140	07.75-07.82	■
2.7 (B 27 F)		Gasolina	RWD	2664	109	148	10.78-07.82	■
2.8 (B 28 F)		Gasolina	RWD	2849	114	155	08.80-07.82	■

LISTA DE APLICACIONES - BUYERS GUIDE

260 (P262, P264) 08.74-07.82					Saloon (Executive car-E Segment)			
2.7 (B 27 A)		Gasolina	RWD	2664	92	125	08.76-07.82	■
2.7 (B 27 E)		Gasolina	RWD	2664	103	140	08.74-07.80	■
2.7 (B 27 E)		Gasolina	RWD	2664	109	148	08.78-07.82	■
2.7 (B 27 F)		Gasolina	RWD	2664	109	148	08.78-07.82	■
2.8 (B 28 A)		Gasolina	RWD	2849	95	129	08.80-07.82	■
2.8 (B 28 E)		Gasolina	RWD	2849	114	155	08.80-07.82	■