

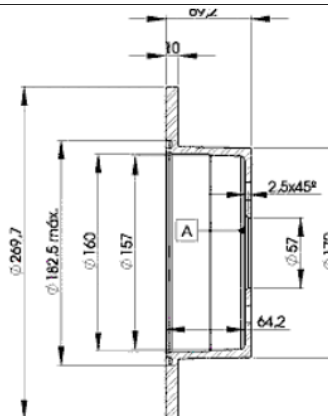
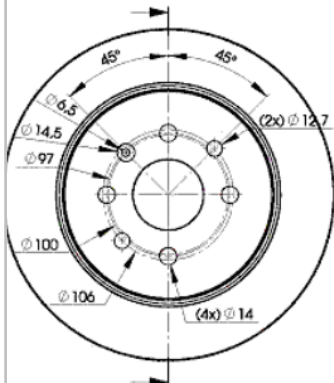
# LISTA DE APLICACIONES - BUYERS GUIDE

## 78BD9209-2



Weight: 9.216

O.E.M.	MAKE
5 69 209	OPEL
90 512 909	VAUXHALL



## 78BD9209-2

(E) 90R-02C0453/0098



Ø270x10x69.2

MAKE
CHEVROLET
OPEL
VAUXHALL



Trac.	CC	Kw	CV		
					Front / Rear

### CHEVROLET

#### VECTRA 03.96-11.06

#### Saloon (Large family car-D Segment)

2.0 (LE4(122CUL4))	Gasolina	FWD	1998	81	110	03.96-12.05	■
--------------------	----------	-----	------	----	-----	-------------	---

### OPEL

#### VECTRA B (J96) 11.96-07.03

#### Estate (Large family car-D Segment)

1.6 i (F35) (X 16 SZR)	-04/99	Gasolina	FWD	1598	55	75	11.96-06.00	■
1.6 i (F35) (16 LZ2)	-04/99	Gasolina	FWD	1598	55	75	11.96-06.00	■
1.6 i 16V (F35) (X 16 XEL)	-04/99	Gasolina	FWD	1598	74	100	11.96-07.02	■
1.6 i 16V (F35) (Y 16 XE)	-04/99	Gasolina	FWD	1598	74	100	11.96-07.02	■
1.6 i 16V (F35) (Z 16 XE)	-04/99	Gasolina	FWD	1598	74	100	11.96-07.02	■
1.8 i 16V (F35) (X 18 XE1)	-04/99	Gasolina	FWD	1796	85	115	11.96-09.00	■
1.8 i 16V (F35) (Z 18 XEL)	-04/99	Gasolina	FWD	1796	85	115	11.96-09.00	■
1.8 i 16V (F35) (X 18 XE)		Gasolina	FWD	1799	85	116	11.96-09.00	■
2.0 i 16V (F35) (C 20 SEL)		Gasolina	FWD	1998	85	116	07.00-07.03	■
2.2 i 16V (F35) (C 22 SEL)		Gasolina	FWD	2198	102	139	07.00-07.02	■
1.7 TD (F35) (X 17 DT (TC4EE1))		Diesel	FWD	1686	60	82	11.96-12.97	■
2.0 DI 16V (F35) (X 20 DTL)	-04/99	Diesel	FWD	1995	60	82	11.96-06.00	■
2.0 DTI 16V (F35) (X 20 DTH)	-04/99	Diesel	FWD	1995	74	101	06.97-07.03	■
2.0 DTI 16V (F35) (Y 20 DTH)	-04/99	Diesel	FWD	1995	74	101	06.97-07.03	■
2.2 DTI 16V (F35) (Y 22 DTR)		Diesel	FWD	2172	88	120	09.00-04.02	■

#### VECTRA B (J96) 09.95-07.03

#### Hatchback (Large family car-D Segment)

1.6 i 16V (F68) (X 16 XEL)	-04/99	Gasolina	FWD	1598	74	101	10.95-07.02	■
1.6 i 16V (F68) (Y 16 XE)	-04/99	Gasolina	FWD	1598	74	101	10.95-07.02	■
1.6 i 16V (F68) (Z 16 XE)	-04/99	Gasolina	FWD	1598	74	101	10.95-07.02	■

# LISTA DE APLICACIONES - BUYERS GUIDE

1.8 i 16V (F68) (X 18 XE1)	-04/99	Gasolina	FWD	1796	85	116	10.95-09.00	■
1.8 i 16V (F68) (Z 18 XEL)	-04/99	Gasolina	FWD	1796	85	116	10.95-09.00	■
1.8 i 16V (F68) (X 18 XE)		Gasolina	FWD	1799	85	116	10.95-09.00	■
2.0 i 16V (F68) (C 20 SEL)		Gasolina	FWD	1998	85	116	07.00-07.03	■
2.2 i 16V (F68) (C 22 SEL)		Gasolina	FWD	2198	102	139	07.00-07.02	■
1.8 FlexFuel (F68) (X 18 XE)		Gasol./Gas (LPG)	FWD	1799	85	116	01.99-09.00	■
1.7 TD (F68) (X 17 DT (TC4EE1))		Diesel	FWD	1686	60	82	10.95-12.98	■
2.0 DTI 16V (F68) (X 20 DTH)	-04/99	Diesel	FWD	1995	74	101	06.97-07.03	■
2.0 DTI 16V (F68) (Y 20 DTH)	-04/99	Diesel	FWD	1995	74	101	06.97-07.03	■
2.2 DTI 16V (F68) (Y 22 DTR)		Diesel	FWD	2172	88	120	09.00-04.02	■
<b>VECTRA B (J96) 09.95-07.04</b>					<b>Saloon (Large family car-D Segment)</b>			
1.6 i 16V (F19) (X 16 XEL)	-04/99	Gasolina	FWD	1598	74	100	10.95-04.02	■
1.6 i 16V (F19) (Y 16 XE)	-04/99	Gasolina	FWD	1598	74	100	10.95-04.02	■
1.6 i 16V (F19) (Z 16 XE)	-04/99	Gasolina	FWD	1598	74	100	10.95-04.02	■
1.8 i 16V (F19) (X 18 XE1)	-04/99	Gasolina	FWD	1796	85	115	10.95-09.00	■
1.8 i 16V (F19) (Z 18 XEL)	-04/99	Gasolina	FWD	1796	85	115	10.95-09.00	■
1.8 i 16V (F19) (X 18 XE)		Gasolina	FWD	1799	85	116	10.95-09.00	■
2.2 i 16V (F19) (C 22 SEL)		Gasolina	FWD	2198	102	139	07.00-07.02	■
1.7 TD (F19) (X 17 DT (TC4EE1))		Diesel	FWD	1686	60	82	10.95-12.98	■
2.0 DTI 16V (F19) (X 20 DTH)	-04/99	Diesel	FWD	1995	74	101	06.97-04.02	■
2.0 DTI 16V (F19) (Y 20 DTH)	-04/99	Diesel	FWD	1995	74	101	06.97-04.02	■
2.2 DTI 16V (F19) (Y 22 DTR)		Diesel	FWD	2172	88	120	09.00-04.02	■
<b>VAUXHALL</b>								
<b>VECTRA (B) (J96) 08.95-03.02</b>					<b>Estate (Large family car-D Segment)</b>			
1.6 i	-04/99	Gasolina	FWD	1598	55	75	11.96-03.02	■
1.6 i 16V	-04/99	Gasolina	FWD	1598	74	100	11.96-03.02	■
1.8 i 16V (F35) (X 18 XE1)	-04/99	Gasolina	FWD	1796	85	115	11.96-09.00	■
1.8 i 16V (F35) (X 18 XE)		Gasolina	FWD	1799	85	116	09.96-09.00	■
1.8 Dualfuel (F35) (Z 18 XE)		Gasol./Gas (LPG)	FWD	1796	92	125	09.00-03.02	■
2.0 DI 16V (F35) (X 20 DTL)	-04/99	Diesel	FWD	1995	60	82	08.95-10.01	■
2.0 DTI 16V (F35) (X 20 DTH)	-04/99	Diesel	FWD	1995	74	101	08.95-10.01	■
2.0 DTI 16V (F35) (Y 20 DTH)	-04/99	Diesel	FWD	1995	74	101	08.95-10.01	■
<b>VECTRA (B) (J96) 08.95-07.03</b>					<b>Hatchback (Large family car-D Segment)</b>			
1.6 i (F68) (X 16 SZR)	05/99-	Gasolina	FWD	1598	55	75	08.95-10.01	■
1.6 i 16V (F68) (X 16 XEL)	-04/99	Gasolina	FWD	1598	74	101	08.95-10.01	■
1.6 i 16V (F68) (Y 16 XE)	-04/99	Gasolina	FWD	1598	74	101	08.95-10.01	■
1.6 i 16V (F68) (Z 16 XE)	-04/99	Gasolina	FWD	1598	74	101	08.95-10.01	■
1.8 i 16V (F68) (X 18 XE1)	-04/99	Gasolina	FWD	1796	85	116	10.95-09.00	■
1.8 i 16V (F68) (X 18 XE)		Gasolina	FWD	1799	85	116	09.95-09.00	■
1.8 Dualfuel (F68) (Z 18 XE)		Gasol./Gas (LPG)	FWD	1796	92	125	09.00-07.03	■
1.7 TD (F68)		Diesel	FWD	1686	60	82	10.95-11.96	■
2.0 DTI 16V (F68) (X 20 DTH)	-04/99	Diesel	FWD	1995	74	101	06.97-10.01	■
2.0 DTI 16V (F68) (Y 20 DTH)	-04/99	Diesel	FWD	1995	74	101	06.97-10.01	■
<b>VECTRA (B) (J96) 08.95-03.02</b>					<b>Saloon (Large family car-D Segment)</b>			
1.6 i (F19) (X 16 SZR)	05/99-	Gasolina	FWD	1598	55	75	08.95-10.01	■
1.6 i 16V (F19) (X 16 XEL)	-04/99	Gasolina	FWD	1598	74	100	08.95-10.01	■
1.6 i 16V (F19) (Y 16 XE)	-04/99	Gasolina	FWD	1598	74	100	08.95-10.01	■
1.6 i 16V (F19) (Z 16 XE)	-04/99	Gasolina	FWD	1598	74	100	08.95-10.01	■

## LISTA DE APLICACIONES - BUYERS GUIDE

1.8 i 16V (F19) (X 18 XE1)		Gasolina	FWD	1796	85	115	10.95-09.00
1.8 i 16V (F19) (X 18 XE)	-04/99	Gasolina	FWD	1799	85	116	10.95-09.00
1.8 Dualfuel (F19) (Z 18 XE)		Gasol./Gas (LPG)	FWD	1796	92	125	09.00-03.02
1.7 TD (F19)		Diesel	FWD	1686	60	82	10.95-11.96
2.0 DTi 16V (F19) (X 20 DTH)	-04/99	Diesel	FWD	1995	74	101	08.95-10.01
2.0 DTi 16V (F19) (Y 20 DTH)	-04/99	Diesel	FWD	1995	74	101	08.95-10.01

