

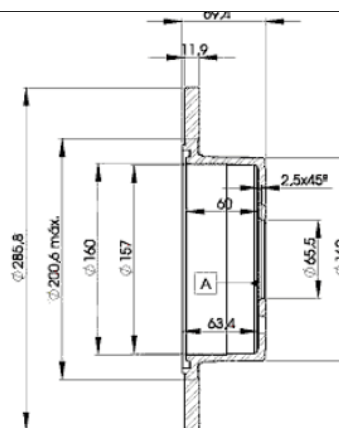
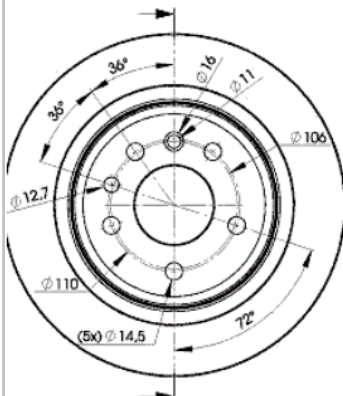
LISTA DE APLICACIONES - BUYERS GUIDE

78BD9211-2



Weight: 10.996

O.E.M.	MAKE
5 69 208	OPEL
90 444 513	VAUXHALL
9044 4513	CADILLAC



78BD9211-2

E1 90R-02C0453/0106



Ø286x12x67

MAKE
OPEL
VAUXHALL



Trac.	CC	Kw	CV
-------	----	----	----



Front / Rear

OPEL

OMEGA B (V94) 03.94-07.03

Estate (Executive car-E Segment)

2.0 (F35, M35, P35)	Gasolina	RWD	1984	90	122	05.94-05.99	■
2.0 (F35, M35, P35) (X 20 SE)	Gasolina	RWD	1998	85	116	03.94-09.99	■
2.0 16V (F35, M35, P35) (X 20 XEV)	Gasolina	RWD	1998	100	136	03.94-09.99	■
2.2 16V (F35, M35, P35) (Y 22 XE)	Gasolina	RWD	2198	106	144	09.99-07.03	■
2.2 16V (F35, M35, P35) (Z 22 XE)	Gasolina	RWD	2198	106	144	09.99-07.03	■
2.5 V6 (F35, M35, P35) (X 25 XE)	Gasolina	RWD	2498	125	170	03.94-09.00	■
3.0 V6 (F35, M35, P35) (X 30 XE)	Gasolina	RWD	2962	155	211	04.94-02.01	■
2.0 DTI 16V (F35, M35, P35) (X 20 DTH)	Diesel	RWD	1995	74	101	09.97-09.00	■
2.5 TD (F35, M35, P35) (U 25 DT)	Diesel	RWD	2498	96	131	04.94-07.01	■
2.5 TD (F35, M35, P35) (U 25 TD)	Diesel	RWD	2498	96	131	04.94-07.01	■
2.5 TD (F35, M35, P35) (X 25 DT)	Diesel	RWD	2498	96	131	04.94-07.01	■
2.5 TD (F35, M35, P35) (X 25 TD)	Diesel	RWD	2498	96	131	04.94-07.01	■
2.5 DTI (F35, M35, P35) (Y 25 DT)	Diesel	RWD	2498	110	150	09.01-07.03	■
2.5 DTI (F35, M35, P35) (Y 25 TD)	Diesel	RWD	2498	110	150	09.01-07.03	■

OMEGA B (V94) 03.94-12.05

Saloon (Executive car-E Segment)

2.0 (F69, M69, P69)	Gasolina	RWD	1984	90	122	05.94-05.99	■
2.0 (F69, M69, P69) (X 20 SE)	Gasolina	RWD	1998	85	116	03.94-09.99	■
2.0 (F69, M69, P69) (20 SE)	Gasolina	RWD	1998	85	115	03.94-12.00	■
2.0 16V (F69, M69, P69) (X 20 XEV)	Gasolina	RWD	1998	100	136	03.94-09.99	■
2.2 16V (F69, M69, P69) (Y 22 XE)	Gasolina	RWD	2198	106	144	09.99-07.03	■
2.2 16V (F69, M69, P69) (Z 22 XE)	Gasolina	RWD	2198	106	144	09.99-07.03	■
2.5 V6 (F69, M69, P69) (X 25 XE)	Gasolina	RWD	2498	125	170	03.94-09.00	■
2.6 V6 (F69, M69, P69) (Y 26 SE)	Gasolina	RWD	2597	132	180	09.00-07.03	■

LISTA DE APLICACIONES - BUYERS GUIDE

3.0 V6 (F69, M69, P69) (X 30 XE)		Gasolina	RWD	2962	155	211	04.94-02.01	■
3.2 V6 (F69, M69, P69) (Y 32 SE)		Gasolina	RWD	3175	160	218	02.01-07.03	■
2.0 DTI 16V (F69, M69, P69) (X 20 DTH)		Diesel	RWD	1995	74	101	09.97-09.00	■
2.5 TD (F69, M69, P69) (U 25 DT)		Diesel	RWD	2498	96	130	04.94-07.03	■
2.5 TD (F69, M69, P69) (U 25 TD)		Diesel	RWD	2498	96	130	04.94-07.03	■
2.5 TD (F69, M69, P69) (X 25 DT)		Diesel	RWD	2498	96	130	04.94-07.03	■
2.5 TD (F69, M69, P69) (X 25 TD)		Diesel	RWD	2498	96	130	04.94-07.03	■
2.5 DTI (F69, M69, P69) (Y 25 DT)		Diesel	RWD	2498	110	150	09.01-07.03	■
2.5 DTI (F69, M69, P69) (Y 25 TD)		Diesel	RWD	2498	110	150	09.01-07.03	■
VAUXHALL								
OMEGA (B) (V94) 12.93-06.03					Estate (Executive car-E Segment)			
2.0 (X 20 SE)		Gasolina	RWD	1998	85	116	03.94-09.99	■
2.0 16V (X 20 XEV)		Gasolina	RWD	1998	100	136	03.94-07.01	■
2.2 16V (Y 22 XE)	-09/00	Gasolina	RWD	2198	106	144	02.94-06.03	■
2.2 16V (Z 22 XE)	-09/00	Gasolina	RWD	2198	106	144	02.94-06.03	■
2.5 V6 (X 25 XE)		Gasolina	RWD	2498	125	170	03.94-09.00	■
3.0 V6 (X 30 XE)		Gasolina	RWD	2962	155	211	07.94-07.00	■
2.0 Dualfuel (X 20 XEV)		Gasol./Gas (LPG)	RWD	1998	100	136	01.99-07.01	■
2.0 DTI 16V (X 20 DTH)		Diesel	RWD	1995	74	101	01.98-09.00	■
2.5 TD (U 25 DT)	-09/00	Diesel	RWD	2498	96	131	04.94-07.01	■
2.5 TD (U 25 TD)	-09/00	Diesel	RWD	2498	96	131	04.94-07.01	■
2.5 TD (X 25 DT)	-09/00	Diesel	RWD	2498	96	131	04.94-07.01	■
2.5 TD (X 25 TD)	-09/00	Diesel	RWD	2498	96	131	04.94-07.01	■
OMEGA (B) (V94) 12.93-07.03					Saloon (Executive car-E Segment)			
2.0 (20 SE)		Gasolina	RWD	1998	85	116	03.94-09.99	■
2.0 (X 20 SE)		Gasolina	RWD	1998	85	116	03.94-09.99	■
2.0 (20 SE)		Gasolina	RWD	1998	85	115	09.95-09.96	■
2.0 (X 20 SE)		Gasolina	RWD	1998	85	115	09.95-09.96	■
2.0 16V (X 20 XEV)		Gasolina	RWD	1998	100	136	03.94-07.01	■
2.2 16V (Y 22 XE)	-09/00	Gasolina	RWD	2198	106	144	01.94-06.03	■
2.2 16V (Z 22 XE)	-09/00	Gasolina	RWD	2198	106	144	01.94-06.03	■
2.5 V6 (X 25 XE)		Gasolina	RWD	2498	125	170	03.94-09.00	■
3.0 V6 (X 30 XE)		Gasolina	RWD	2962	155	211	04.94-07.00	■
2.0 Dualfuel (X 20 XEV)		Gasol./Gas (LPG)	RWD	1998	100	136	05.98-07.01	■
2.0 DTI 16V (X 20 DTH)		Diesel	RWD	1995	74	101	01.98-09.00	■
2.5 TD (U 25 DT)	-09/00	Diesel	RWD	2498	96	131	04.94-07.01	■
2.5 TD (U 25 TD)	-09/00	Diesel	RWD	2498	96	131	04.94-07.01	■
2.5 TD (X 25 DT)	-09/00	Diesel	RWD	2498	96	131	04.94-07.01	■
2.5 TD (X 25 TD)	-09/00	Diesel	RWD	2498	96	131	04.94-07.01	■