

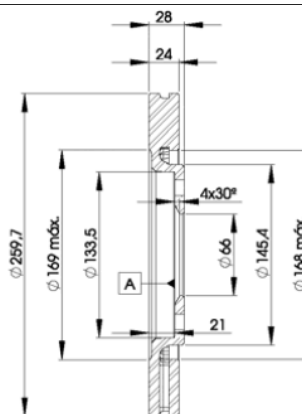
# LISTA DE APLICACIONES - BUYERS GUIDE

## 78BD9406-2



Weight: 10.852

O.E.M.	MAKE
4246.L9	PEUGEOT



## 78BD9406-2



Ø260x24x28.2

MAKE
PEUGEOT



Trac.	CC	Kw	CV
-------	----	----	----



Front / Rear

### PEUGEOT

#### 406 (8E/F) 10.96-10.04

#### Estate (Large family car-D Segment)

1.8 16V (6FZ (EW7J4))	Gasolina	FWD	1749	85	116	10.00-10.04	■
1.8 (LFX (XU7JB))	Gasolina	FWD	1761	66	90	05.97-10.04	■
1.8 (L6A (XU7JP))	Gasolina	FWD	1761	74	101	10.96-03.99	■
1.8 (LFZ (XU7JP))	Gasolina	FWD	1761	74	101	10.96-03.99	■
1.8 16V (LFY (XU7JP4))	Gasolina	FWD	1761	81	110	10.96-10.00	■
1.8 Bifuel (6FZ (EW7J4))	Gasol./G as (LPG)	FWD	1749	85	116	10.00-02.04	■
1.9 D (DHW (XUD9SD))	Diesel	FWD	1905	55	75	10.96-10.04	■
1.9 TD (DHX (XUD9TE))	Diesel	FWD	1905	66	90	10.96-10.04	■

#### 406 (8B) 08.95-01.05

#### Saloon (Large family car-D Segment)

1.6 (BFZ (XU5JP))	Gasolina	FWD	1580	65	88	11.95-05.04	■
1.8 16V (6FZ (EW7J4))	Gasolina	FWD	1749	85	116	10.00-05.04	■
1.8 (LFX (XU7JB))	Gasolina	FWD	1761	66	90	05.97-05.04	■
1.8 (L6A (XU7JP))	Gasolina	FWD	1761	74	101	10.96-03.99	■
1.8 (LFZ (XU7JP))	Gasolina	FWD	1761	74	101	10.96-03.99	■
1.8 16V (LFY (XU7JP4))	Gasolina	FWD	1761	81	110	11.95-10.00	■
1.8 Bifuel (6FZ (EW7J4))	Gasol./G as (LPG)	FWD	1749	85	116	09.00-05.04	■
1.8 Bifuel (LFY (XU7JP4))	Gasol./Et anol	FWD	1761	81	110	04.99-05.03	■
1.9 SL	Diesel	RWD	1905	51	69	09.97-03.99	■
1.9 D (DHW (XUD9SD))	Diesel	FWD	1905	55	75	10.96-05.04	■
1.9 TD (DHY (XUD9TE))	Diesel	FWD	1905	68	92	01.96-05.04	■