

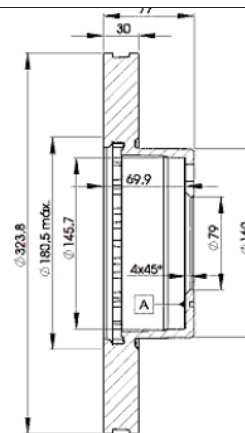
LISTA DE APLICACIONES - BUYERS GUIDE

78BD9895-2



Weight: 21.460

O.E.M.	MAKE
34 11 1 159 895	BMW
34 11 1 159 916	BMW
34 11 1 161 086	BMW
34 11 6 756 087	BMW
34 11 6 757 746	BMW



78BD9895-2

E1 90R-02C0074/1462



Ø324x30x77

MAKE
ALPINA
BMW



Trac.	CC	Kw	CV
-------	----	----	----



Front / Rear

ALPINA

B10 II (E39) 12.96-05.04						Saloon (Executive car-E Segment)			
4.6 V8 (M62 B46 (468S72))		Gasolina	RWD	4619		250	340	12.96-10.98	■
B10 II Touring (E39) 01.97-05.04						Estate (Executive car-E Segment)			
4.6 V8 (M62 B46 (468S72))		Gasolina	RWD	4619		250	340	01.97-10.98	■

BMW

5 Serie IV (E39) 09.95-07.03						Saloon (Executive car-E Segment)			
530i		Gasolina	RWD	2979		168	228	09.00-06.03	■
530i (M54 B30 (306S3))		Gasolina	RWD	2979		170	231	09.00-06.03	■
7 Serie III (E38) 03.94-11.01						Saloon (Luxury car-F Segment)			
740 d (M67 D39 (398D1))		Diesel	RWD	3901		180	245	05.99-11.01	■
8 Serie (E31) 01.90-12.99						Coupe (Grand Tourer-S Segment)			
850 CSi (S70 B56 (56121))		Gasolina	RWD	5576		280	380	11.92-12.96	■